

COUNTY SURVEYORS FILE DATA
DO NOT REMOVE FROM OFFICE

ERICKSON PROPERTY

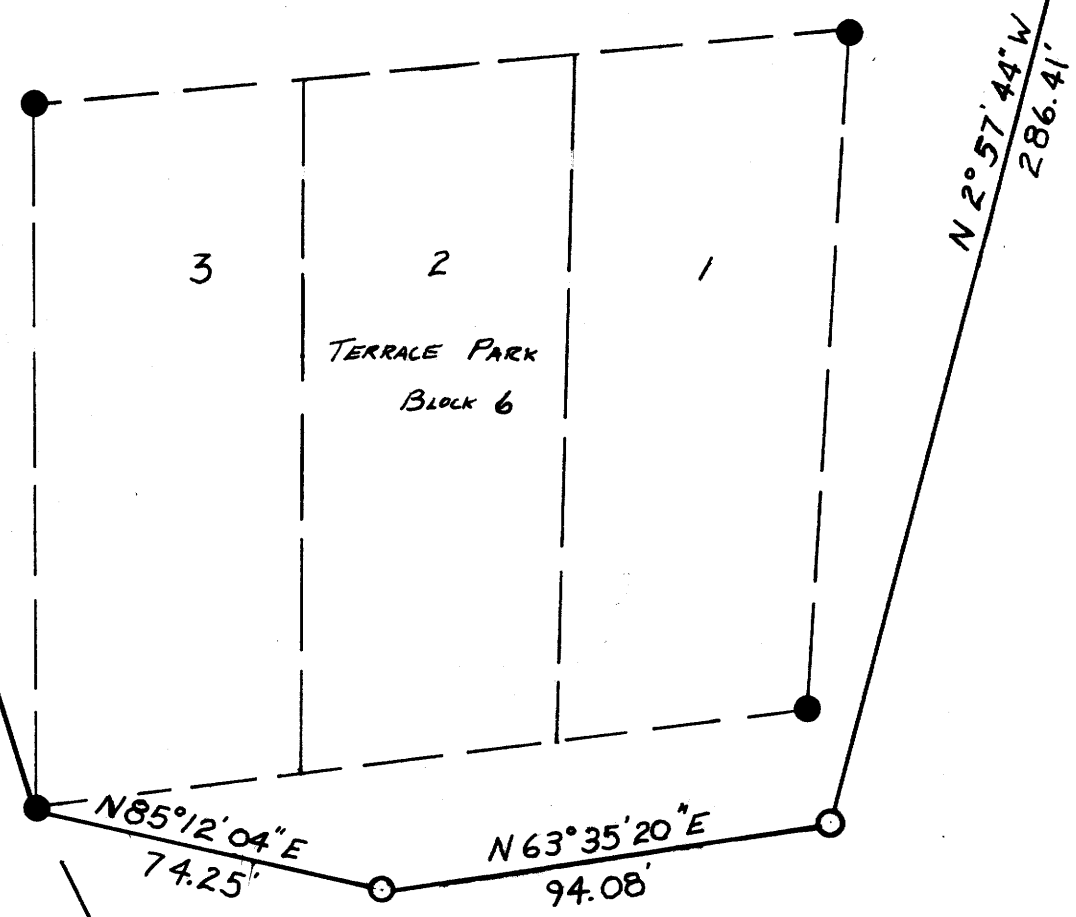
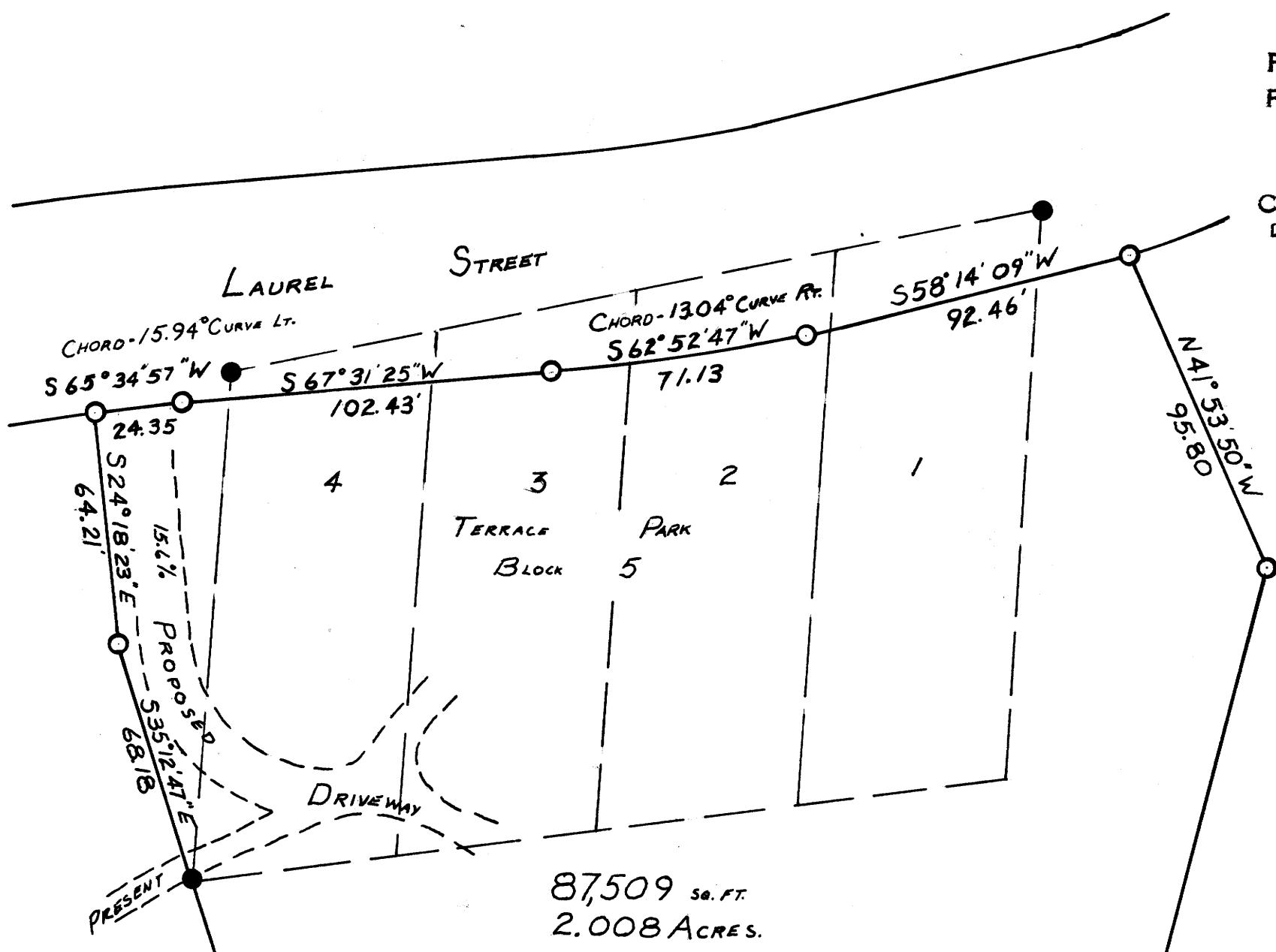
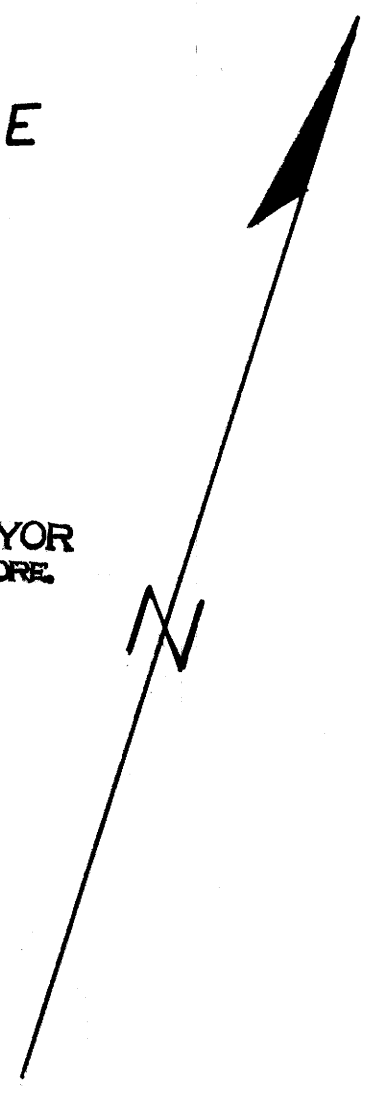
WITHIN FIRST ADDITION TO SKYLINE TERRACE

FEB. 13, 1978

SCALE 1 IN. = 40 FT.

FILED ✓
RECEIVED ✓
FEB 22 1978

COUNTY SURVEYOR
DOUGLAS COUNTY, ORE.



BASIS OF BEARINGS;
WEST BOUNDARIES OF
LOT 516 BLOCK 3
SKYLINE TERRACE

- 3/4" I.R. SET BY BYRON M23-15
- 5/8" I.R. SET

BRASS CAP C.S.
1/4 S. 19 T. 27S., R. 5W., W.M.

REGISTERED
PROFESSIONAL
LAND SURVEYOR

Howard W. Johnstone

OREGON
MAY 13, 1980
HOWARD W. JOHNSTONE
498