

COUNTY SURVEYORS FILE DATA
DO NOT REMOVE FROM OFFICE

SURVEY FOR DESCRIPTION

IN SECTION 24, T.27S. R.7W.W.M.

FOR: DALE GREEN
BY: BAUGHMAN TECHNICAL SERVICES INC.

JANUARY 1978

SCALE: 1" = 100'

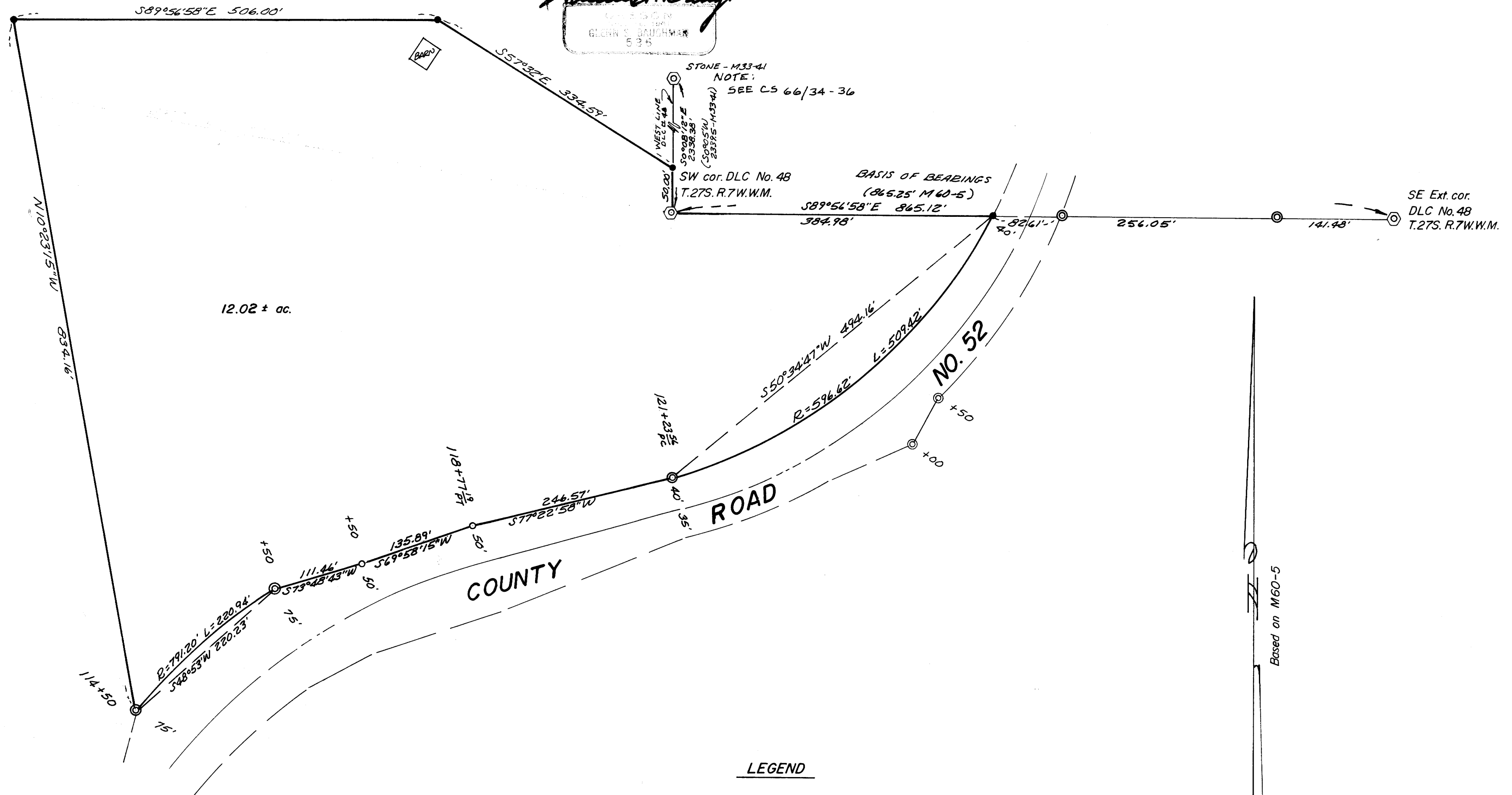
BAUGHMAN
SURVEYORS
GLENN BAUGHMAN
535

Glenn Baughman

FILED *d*
RECEIVED *dh*

FEB 13 1978

COUNTY SURVEYOR
DOUGLAS COUNTY, ORE.



LEGEND

- — Not Found
- — Set 1/2" iron rod
- ⊙ — Found 5/8" iron rod
- ⊗ — Found Stone

Based on M60-5

MAP FILE M68-63

MAP FILE M68-63