

SURVEY FOR MORTGAGE PURPOSES IN SEC. 23 & 26, T.26S. R.6W.W.M.

FOR: WOODCRAFT HOMES
BY: BAUGHMAN SURVEYING SERVICES INC.

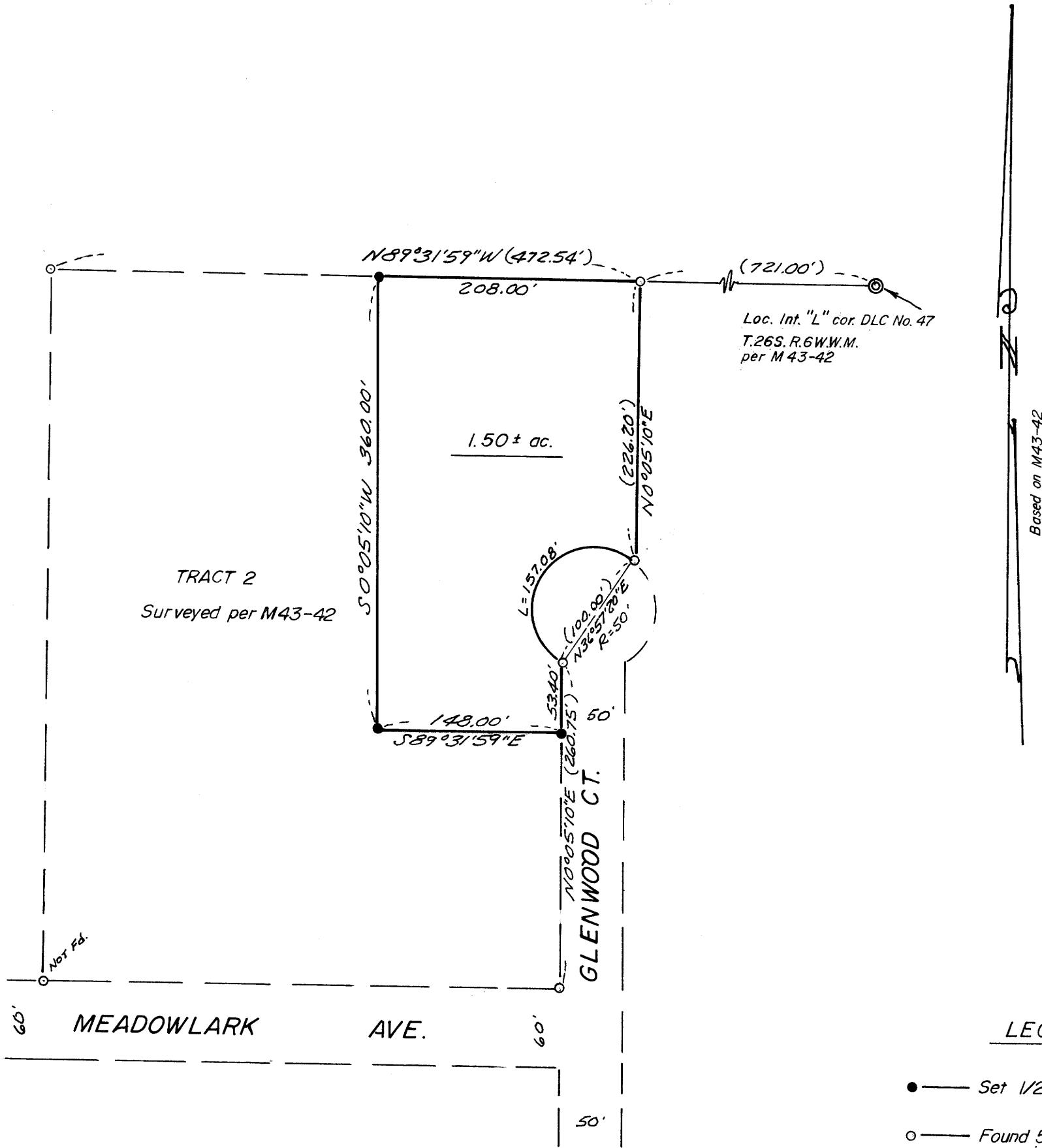
FEBRUARY 1978 SCALE: 1"=100'

COUNTY SURVEYORS FILE DATA
DO NOT REMOVE FROM OFFICE

FILED *d*
RECEIVED *dh*

FEB 13 1978

COUNTY SURVEYOR
DOUGLAS COUNTY, ORE.



LEGEND

- — Set 1/2" iron rod
- — Found 5/8" iron rod, set per M43-42 or as indicated on map.

REGISTERED
PROFESSIONAL
LAND SURVEYOR

Glenn S. Baughman

OREGON
JULY 1911
GLENN S. BAUGHMAN
1978

FM 3-29