

COUNTY SURVEYORS FILE DATA
DO NOT REMOVE FROM OFFICE

**SURVEY TO REVISE DESCRIPTIONS OF LOTS 19 & 20
OF BAR "L" RANCH ACRES, PHASE 2,- SEC'S. 17 & 20, T.26S. R.3W.W.M.**

FOR: LONG & BROOKS
BY: C & G ENGINEERING, INC.

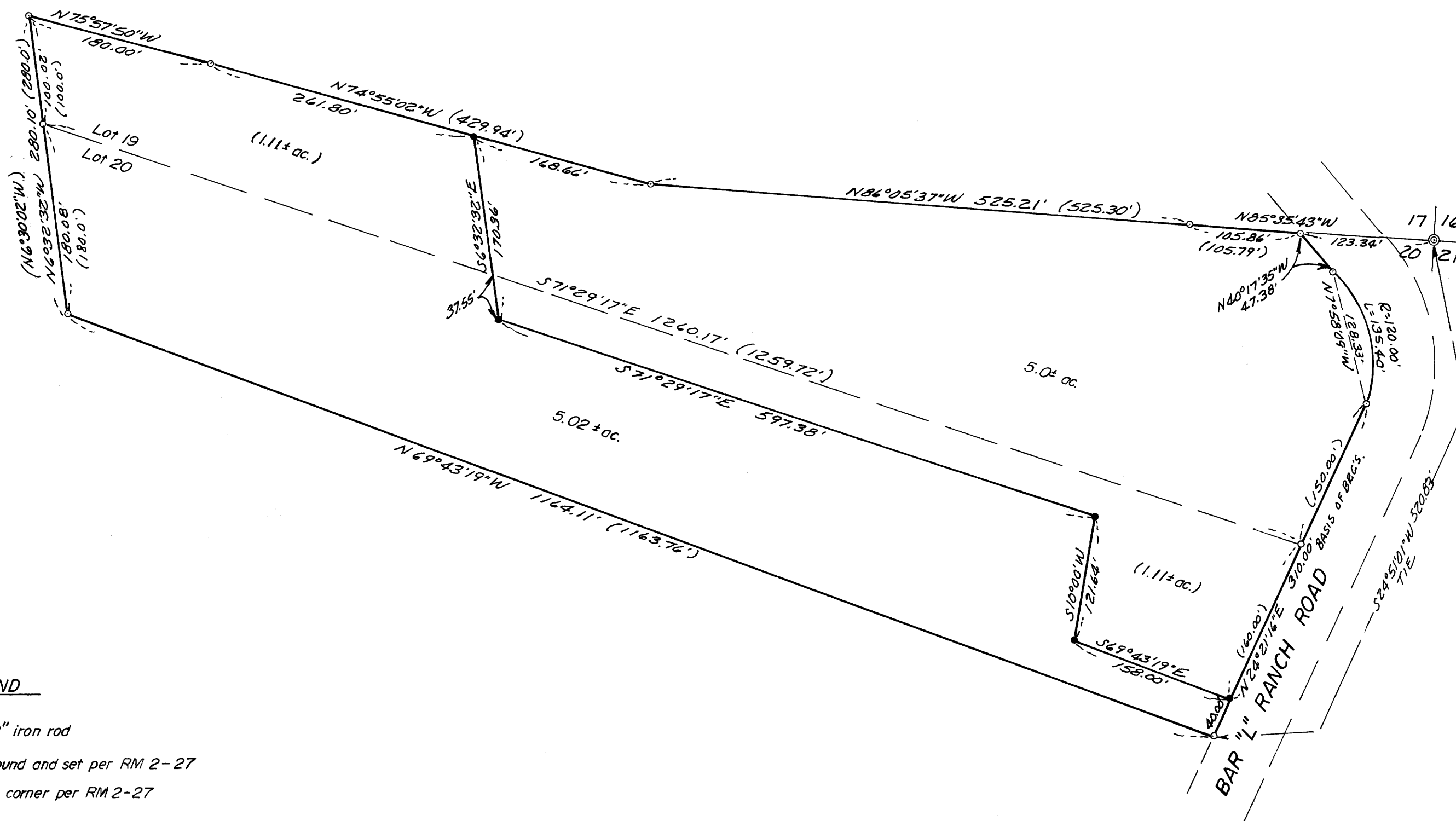
DECEMBER 1977 — SCALE: 1" = 100'

FILED ✓
RECEIVED JH

DEC 21 1977

COUNTY SURVEYOR
DOUGLAS COUNTY, ORE.

MAP FILE M68-6



Based on RM 2-27

REGISTERED
PROFESSIONAL
LAND SURVEYOR
Allen S. Baughman
OREGON
JAN 1 1978
632

MAP FILE M68-6