

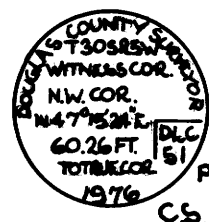
SURVEY FOR DEED DESCRIPTION

of land described in instrument number 71-17440
of Douglas County Deed Records also shown in
C.S. 51-133 file of Douglas County Surveyor's Records

D.L.C. 50, T.30 S., R.5 W., W.70.

For STANLY KLENKE

COUNTY SURVEYOR'S FILE DATA
DO NOT REMOVE FROM OFFICE



BRASS CAP FOUND ON 1" IRON PIPE PER C.S. 59/15

D.L.C. 51

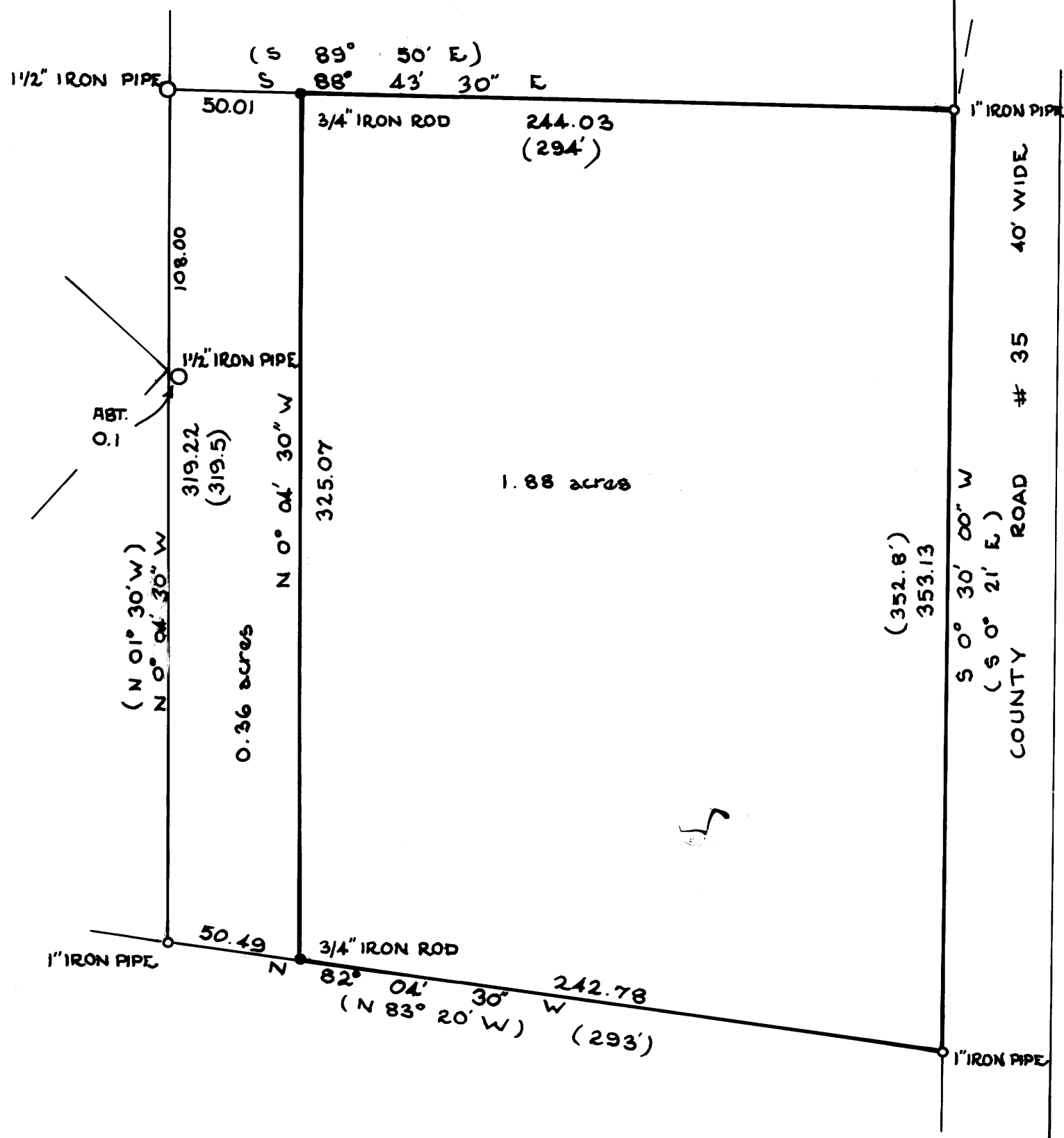
FILED RECEIVED

FEB 14 1978

COUNTY SURVEYOR DOUGLAS COUNTY, ORE.

LEGEND

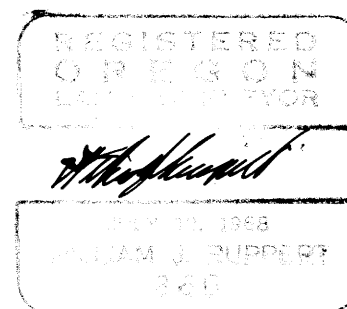
- MONUMENTS SET
- } MONUMENTS FOUND
- () COURSE PER INST # 71-17440 & PER C.S. 51/133
- [] COURSE PER COUNTY SURVEYOR'S BRASS CAP
- { } CALCULATED TIE



BASED ON SOLAR OBSERVATION



SCALE 1" = 50'



UNIQUE SURVEYING COMPANY
626 Division St. Myrtle Creek Ore
863-5201

FEB 1978

MAP FILE M68-57