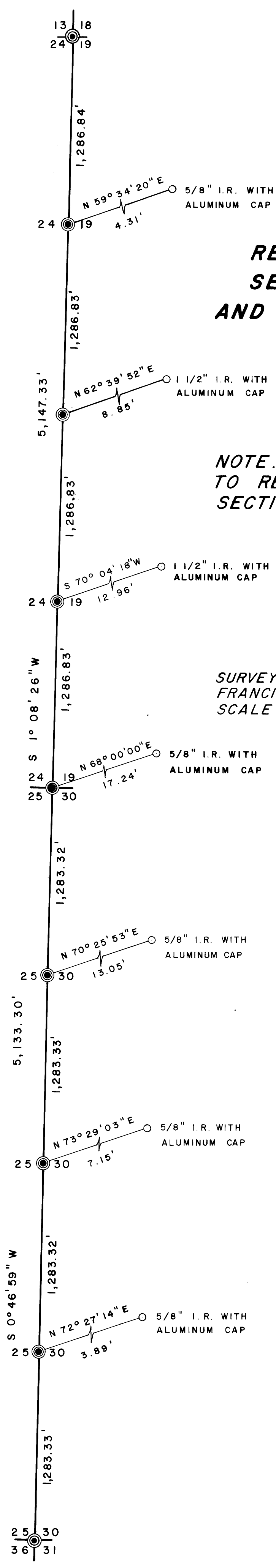


FILED
 RECEIVED
 JAN 27 1978
 COUNTY SURVEYOR
 DOUGLAS COUNTY, ORE.

**RESURVEY OF SECTION LINE BETWEEN
 SECTIONS 19 & 30, T.29S., R.5W., W.M.
 AND SECTIONS 24 & 25, T.29S., R.6W., W.M.**

NOTE: THIS SURVEY SUPERCEDES M37-20 DUE
 TO RELOCATION OF SECTION CORNER COMMON TO
 SECTIONS 19,24,25 AND 30.

SURVEYED BY DOUGLAS COUNTY SURVEYOR'S OFFICE
 FRANCIS L. INGRAM
 SCALE 1" = 500'
 COUNTY SURVEYOR
 DECEMBER 1977



LEGEND

- ⊙ Set Brass Cap
- Corner location per M37-20 reset by Douglas County Surveyor's Office with monument as noted.

For further information see
 County Surveyor Book of Records
 Corners Renewed

1' = 0.3048006 METRES

REGISTERED
 PROFESSIONAL
 LAND SURVEYOR

Francis L. Ingram

OREGON
 JULY 11, 1969
 FRANCIS L. INGRAM
 902

COUNTY SURVEYORS FILE DATA
 DO NOT REMOVE FROM OFFICE

DEPENDENT RESURVEY

T. 29 S., R. 5 W. & T. 29 S., R. 6 W.

This survey is a dependent resurvey of that portion of the range line located between Sections 19 and 30, Township 29 South, Range 5 West, and Sections 24 and 25, Township 29 South, Range 6 West, Willamette Meridian, Douglas County, Oregon.

This particular segment of range line was resurveyed in 1969 by the Douglas County Surveyor's Office (See County Surveyor's Map File M37-20), and all missing corners were established by single proportionate measurement.

Recently, evidence of the original corner common to Sections 19 and 30, Township 29 South, Range 5 West, and Sections 24 and 25, Township 29 South, Range 6 West was found and verified. Locating this section corner in its original position creates a discrepancy of approximately 17 feet between this original corner and the 1969 proportioned corner location.

The purpose of this survey is to correct all corners set during the 1969 survey to their proper position as determined by single proportionate measurement between the controlling section corners. Field notes regarding these corners are filed with the Douglas County Surveyor's Office.

Equipment

Kern DKM2-AE No. 161938 Theodolite
Hewlett-Packard Model 3800A No. 1954 Distance Meter

Procedure

Closed traverses were run and all corners were tied either as traverse points or short side ties.

Horizontal angles were measured by two repetitions in both the direct and inverted telescope positions. Zenith angles were measured in both the direct and inverted telescope positions.

Basis of Bearings

Bearings are based on Byron's survey (M37-20) South $0^{\circ} 57' 57''$ West between the Northwest and Southwest corners to Section 19, Township 29 South, Range 5 West. All distances shown on the map of this survey are true distances.

December 19, 1977

Gary L. Langlitz, Field Supervisor
Douglas County Surveyor's Office

C.S. FILE NO. 59/49