

SURVEY OF LOT 15, EDEN ORCHARDS IN SECTION 35, T26S, R7W, W.M.

SURVEY FOR SCOTT HENDY
SURVEY BY BHW ENG. & SURVEYING
JANUARY, 1978

COUNTY SURVEYORS FILE DATA
DO NOT REMOVE FROM OFFICE

FILED ✓
RECEIVED ✓
JAN 19 1978
COUNTY SURVEYOR
DOUGLAS COUNTY, ORE.

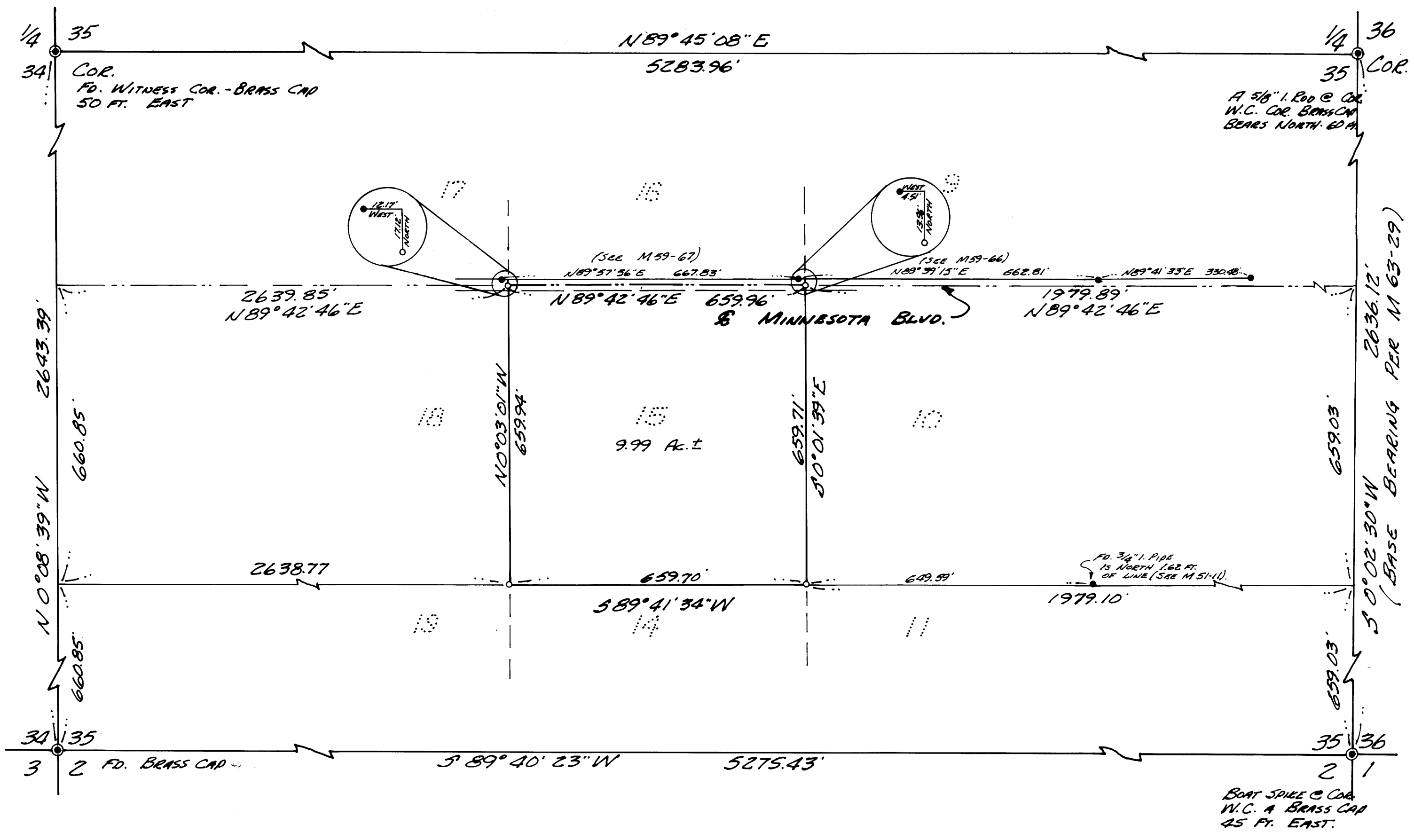
- — 3/8" 5/16" I. ROD.
- — FD. 5/16" I. ROD UNLESS NOTED OTHERWISE.

FOR RECORD OF FOUND MONUMENTS SEE COUNTY SURVEYOR'S
FILE NO. AS FOLLOWS: M59-67, M59-66, AND M51-11.

REGISTERED
PROFESSIONAL
LAND SURVEYOR

Romanso E. Ware

OREGON
NOV. 16, 1973
ROMANSO E. WARE
1905



MAP FILE M. 68 - 38

MAP FILE M. 68 - 38