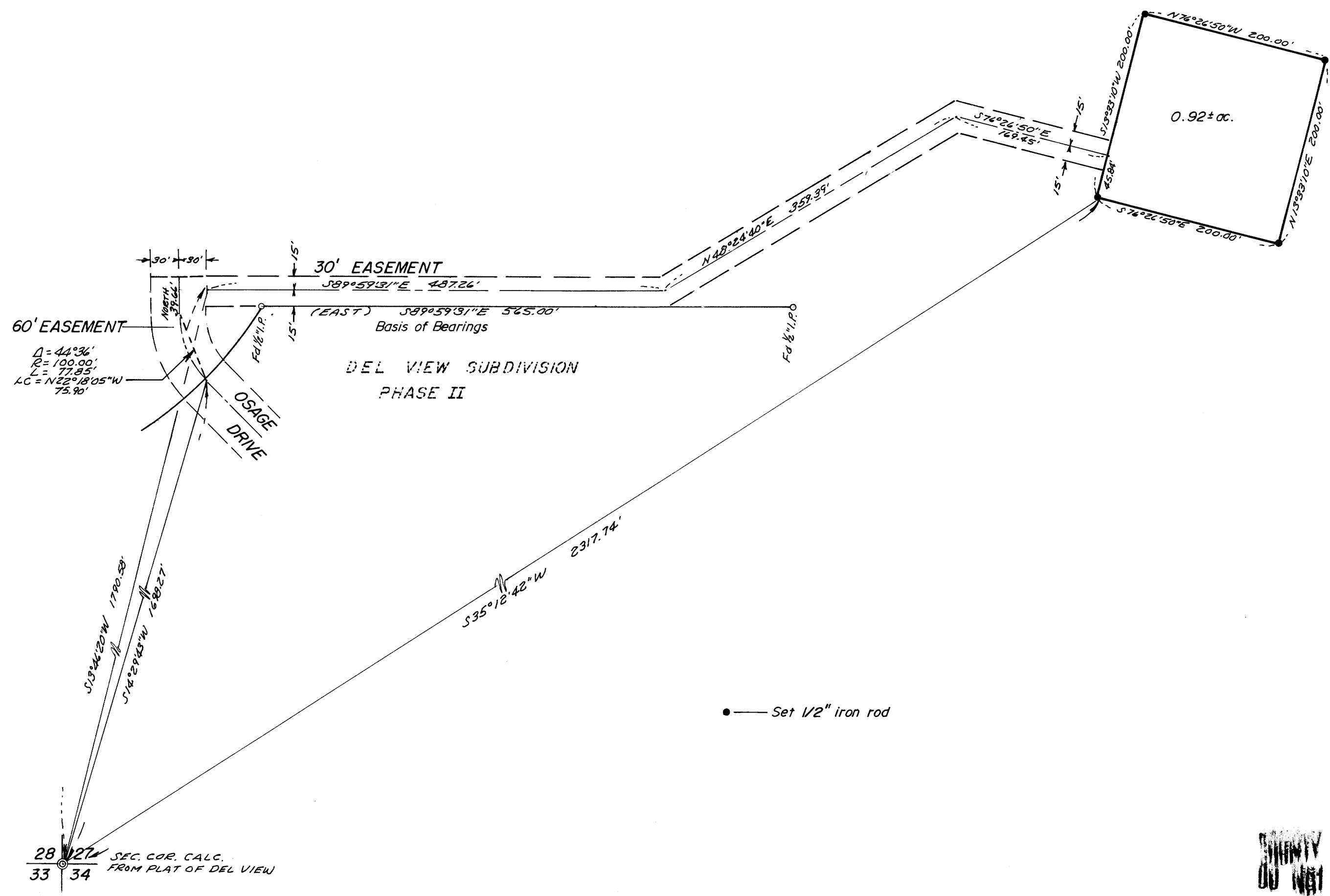


FILED *✓*
 RECEIVED *✓*
 JAN 18 1978
 COUNTY SURVEYOR
 DOUGLAS COUNTY, ORE.
✓

MAP FILE M.6.8 - 36



Based on North line Del View Subdivision Phase II

REGISTERED
 PROFESSIONAL
 LAND SURVEYOR
Glenn S. Baughman
 OREGON
 GLENN S. BAUGHMAN

SURVEY FOR MORTGAGE PURPOSES IN SECTION 27, T.26S. R.6W.W.M.		
FOR: DONALD GAMBILL	SCALE 1" = 100'	DRAWN BY <i>Eab</i>
BAUGHMAN TECHNICAL SERVICES INC.		
DATE 1/11/78	APPROVED BY	DRAWING NUMBER

**COPIES SURVEYORS WILL NOT
 DO NOT REMOVE FROM OFFICE**

MAP FILE M.6.8 - 36