

SURVEY TO SET PROPERTY CORNER

IN SECTION 4, T.30S. R.5W. W.M.

FOR: LEWANDOWSKI

BY: BAUGHMAN TECHNICAL SERVICES, INC.

FILED
RECEIVED

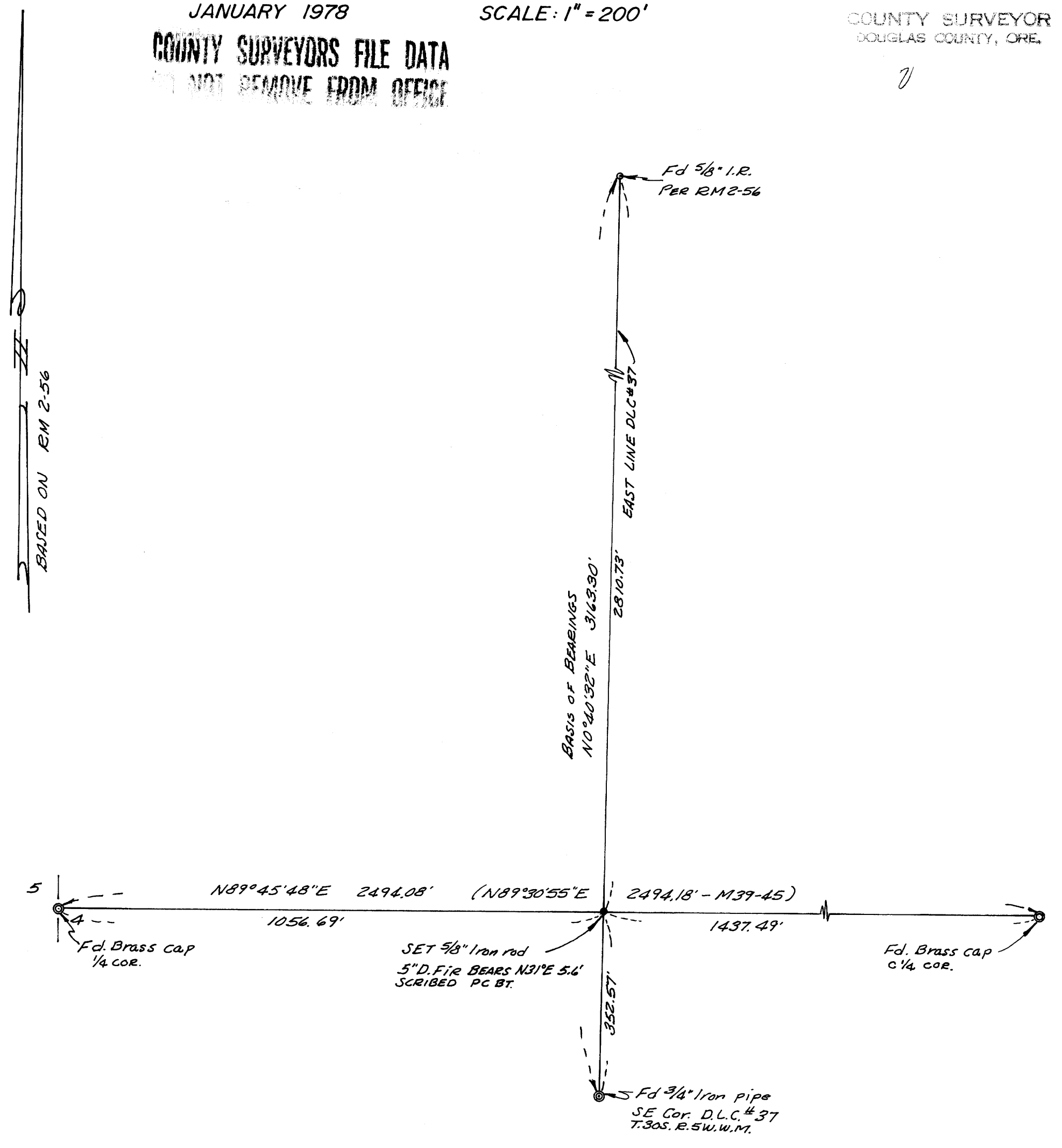
JAN 18 1978

COUNTY SURVEYOR
DOUGLAS COUNTY, ORE.

JANUARY 1978

SCALE: 1" = 200'

COUNTY SURVEYORS FILE DATA
DO NOT REMOVE FROM OFFICE



REGISTERED
PROFESSIONAL
LAND SURVEYOR

Glenn S. Baughman

OREGON
JULY 4, 1981
GLENN S. BAUGHMAN
536