

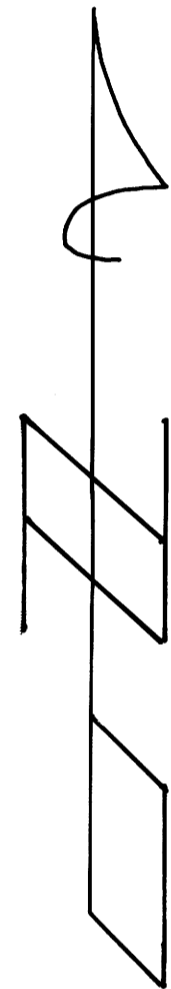
COUNTY SURVEYORS FILE NO.
 DO NOT REMOVE FROM OFFICE

SURVEY TO SET ONE-SIXTEENTH CORNERS

SECTION 8, T 24 S, R 7 W, W.M.
 FOR SUN STUDS INC.

BY BURTON W. HOLT
 NOVEMBER 1977

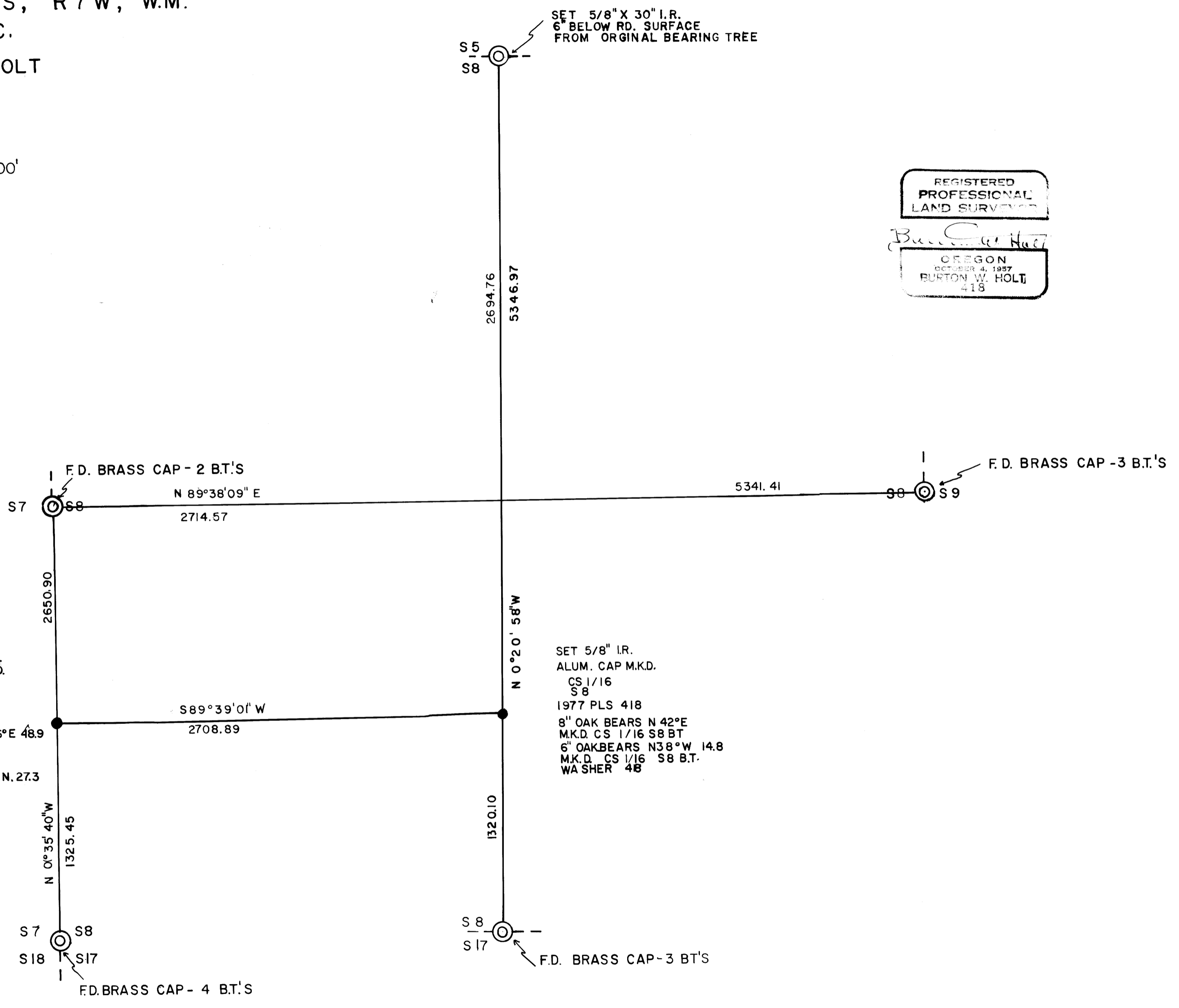
SCALE - 1" = 500'



BASIS OF BEARING
 SOLAR OBSERVATION

SET 5/8" X 30" I.R.
 ALUM. CAP M.K.D.
 S 1/16
 S 7 | S 8
 1977 PLS 418
 12" FIR BEARS N 36° E 48.9
 M.K.D. S 1/16 S 8
 WASHER 418
 20" W. FIR BEARS N. 27.3
 M.K.D. S 1/16 S 7
 WASHER 418

SET 5/8" I.R.
 ALUM. CAP M.K.D.
 CS 1/16
 S 8
 1977 PLS 418
 8" OAK BEARS N 42° E
 M.K.D. CS 1/16 S 8 BT
 6" OAK BEARS N 38° W 14.8
 M.K.D. CS 1/16 S 8 B.T.
 WASHER 48



REGISTERED
 PROFESSIONAL
 LAND SURVEYOR
 Burton W. Holt
 OREGON
 OCTOBER 4, 1957
 BURTON W. HOLT
 418

15-89 W

15-89 W