

WEYERHAEUSER CO.  
SURVEY  
OF  
SECTION 12, T25S, R3W, WM.  
DOUGLAS COUNTY, OREGON

CORNERS USED FOR CONTROL

CORNERS ESTABLISHED OR RE-ESTABLISHED - CONT

- ① **NORTHEAST SECTION CORNER**  
FOUND A GLO BRASS CAP 1943  
40" FIR STUMP, S73W, 41.2' CS BT  
43" FIR STUMP, N71W, 46.0' CS BT
- ② **EAST 1/4 CORNER SECTION 12 ONLY**  
FOUND A GLO BRASS CAP 1943  
30" FIR, S78W, 15.2' GLO BT  
36" FIR, S21W, 11.2' GLO BT
- ③ **SOUTHEAST SECTION CORNER**  
FOUND A GLO BRASS CAP 1943  
18" FIR, N51W, 23.0' GLO BT  
24" FIR, S54W, 29.0' GLO BT  
10" FIR, S14W, 8.6' CS BT
- ④ **SOUTH 1/4 CORNER**  
FOUND A GLO BRASS CAP UPROOTED  
UNDER A 38" FIR WINDFALL 1943  
54" FIR, N4W, 44.2' GLO BT  
42" FIR STUMP, S14W, 52.8' GLO BT  
9" DOWN HEMLOCK, S63W, 13.4' CSBT  
8" HEMLOCK, N24E, 22.7' CS BT
- ⑤ **SOUTHWEST SECTION CORNER**  
FOUND A GLO BRASS CAP 1943  
14" HEM, N16E, 15.5' CS BT  
30" HEM, S53W, 11.9' CS BT  
8" HEM, N53W, 20.8' CS BT  
48" FIR STUMP, N38 1/2 W, 12.9' GLO BT,  
MKD 11.9'
- ⑥ **WEST 1/4 CORNER**  
FOUND A GLO BRASS CAP 1943  
40" FIR STUMP, S74 1/2 E, 29.7' GLO BT  
8" FIR, S40W, 19.4' CS BT  
24" CEDAR STUMP, S67E, 53.3' CS BT
- ⑦ **NORTHWEST SECTION CORNER**  
FOUND A GLO BRASS CAP 1943  
6" MAPLE, N60E, 44.4' CS BT  
15" HEM STUMP, N8 1/2 W, 21.8' GLO BT,  
MK'D YEW STUMP

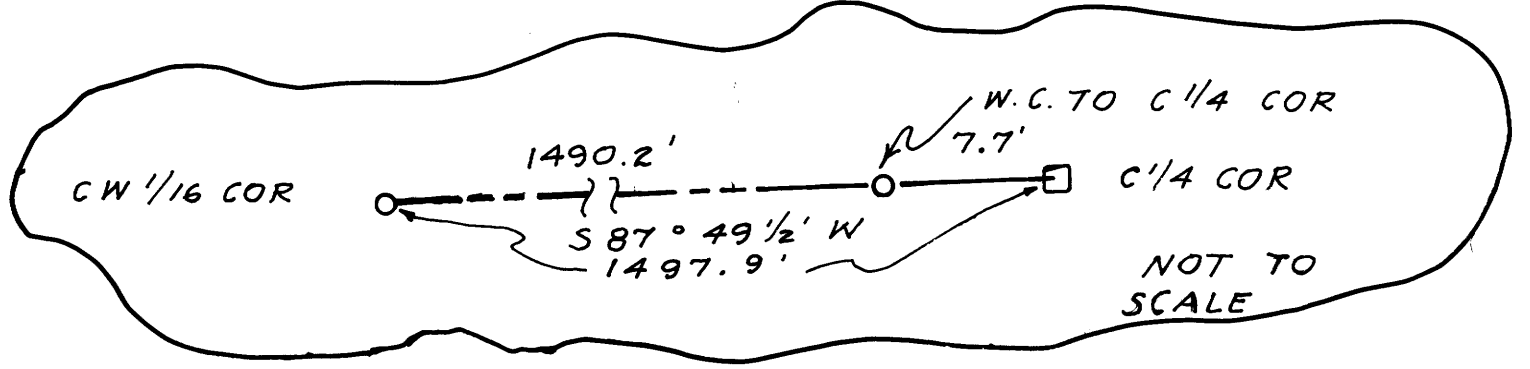
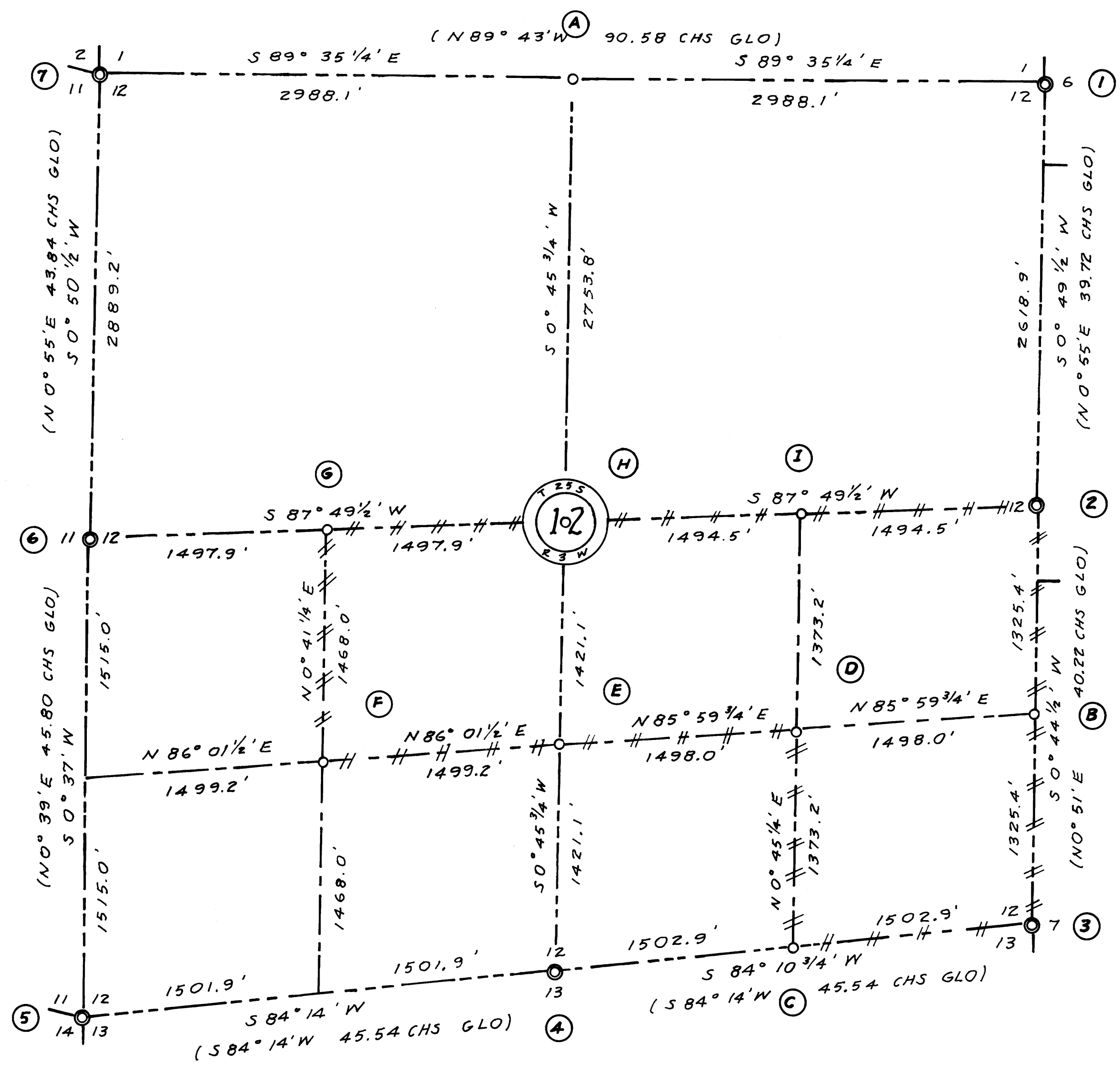
- ① **SOUTHEAST 1/16 CORNER**  
SET A 3/4" X 36" IRON PIPE  
16" FIR, N73E, 4.6' TO R.R. SPIKE  
16" FIR, N52W, 13.3' TO R.R. SPIKE
- ② **CENTER SOUTH 1/16 CORNER**  
SET A 3/4" X 36" IRON PIPE  
24" HEM, S64E, 22.7' TO R.R. SPIKE  
24" HEM, N37W, 22.5' TO R.R. SPIKE
- ③ **SOUTHWEST 1/16 CORNER**  
SET A 3/4" X 36" IRON PIPE  
22" HEM, N47E, 9.6' TO R.R. SPIKE  
16" HEM, S70E, 10.0' TO R.R. SPIKE
- ④ **CENTER WEST 1/16 CORNER**  
SET A 3/4" X 36" IRON PIPE  
8" FIR, S77E, 9.4' TO R.R. SPIKE  
6" FIR, S16W, 16.6' TO R.R. SPIKE
- ⑤ **CENTER 1/4 CORNER**  
POINT FOR CENTER 1/4 CORNER FALLS  
ON SIDE OF ROCK BLUFF. SET A  
3/4" X 36" IRON PIPE S87° 49 1/2" W, 7.7'  
FROM POINT FOR CENTER 1/4 CORNER  
AS A WITNESS CORNER.  
24" CEDAR, S30W, 10.7' TO R.R. SPIKE  
16" HEM, N35W, 17.7' TO R.R. SPIKE
- ⑥ **CENTER EAST 1/16 CORNER**  
SET A 3/4" X 36" IRON PIPE  
48" FIR, N1E, 22.0' TO R.R. SPIKE  
24" HEM, S35W, 17.0' TO R.R. SPIKE

NOTES

- (1) BEARINGS BASED ON GLO 1943 SURVEY FOR W 1/2 SOUTH LINE OF THIS SECTION
- (2) ● INDICATES GLO MONUMENT FOUND
- (3) ○ INDICATES MONUMENT SET
- (4) ——— INDICATES PROPERTY LINE MARKED WITH NOTCH IN BLAZE
- (5) DISTANCE TO R.R. SPIKE IN BASE OF TREE REFERS TO HEAD OF SPIKE. WEYERHAEUSER COMPANY CORNER PLATES NAILED ON ALL ESTABLISHED BEARING TREES SCALE: 1" = 600'
- (7) SURVEYED OCT-NOV-DEC 1977 BY TRIANGLE ENGINEERING CO., EUGENE, OR, 97401
- (8) CLOSURES  
TRAY TO RE-SET N 1/4 COR 1/25,400  
TRAY TO S 1/4 AND SW COR 1/18,500  
WEYCO PROP TRAY 1/6,700  
TRAY TO W 1/4 COR 1/20,300  
TRAY TO NW COR 1/46,500  
TRAY TO NE AND E 1/4 COR 1/21,300

CORNERS ESTABLISHED OR RE-ESTABLISHED

- ① **NORTH 1/4 CORNER**  
SET A 3/4" X 36" IRON PIPE  
6" FIR, S89W, 25.5' TO R.R. SPIKE  
8" FIR, S25W, 37.7' TO R.R. SPIKE
- ② **SOUTH 1/16 CORNER SECTION 12 ONLY**  
SET A 3/4" X 36" IRON PIPE  
12" HEM, N15E, 33.4' TO R.R. SPIKE  
26" HEM, N37W, 14.7' TO R.R. SPIKE
- ③ **EAST 1/16 CORNER SECTIONS 12 & 13**  
SET A 3/4" X 36" IRON PIPE  
18" HEM, N7E, 19.6' TO R.R. SPIKE  
12" HEM, S59E, 5.1' TO R.R. SPIKE



*Trish Johnson*

MAP FILE 1142-3-1-1

MAP FILE 1142-3-1-1