

COUNTY SURVEYORS FILE DATA  
DO NOT REMOVE FROM OFFICE

# SURVEY FOR DESCRIPTION

## IN SECTION 6, T.23S.R.4W.W.M.

FOR: BOUCOCK

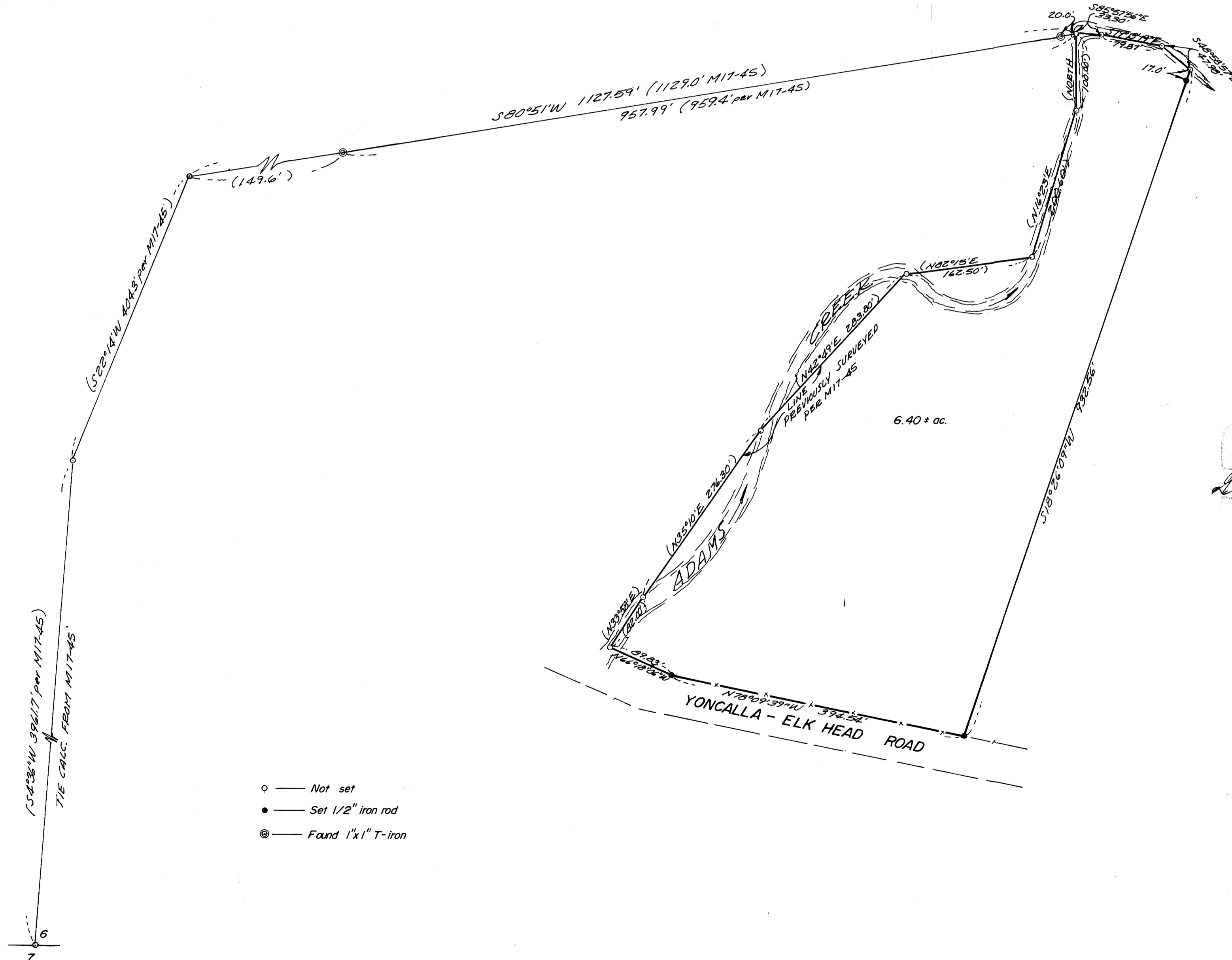
BY: C & G ENGINEERING INC.

OCTOBER 1977 SCALE: 1"=100'

FILED *dh*  
RECEIVED *dh*

JAN 4 1978

COUNTY SURVEYOR  
DOUGLAS COUNTY, ORE.



REGISTERED  
PROFESSIONAL  
LAND SURVEYOR

*Glenn S. Baughman*

OREGON  
JULY 14, 1961  
GLENN S. BAUGHMAN  
536

MAP FILE M17-45 - 24

MAP FILE M17-45 - 24