

COUNTY SURVEYORS FILE DATA
DO NOT REMOVE FROM OFFICE

FILED *dh*
RECEIVED *dh*

JAN 4 1978

COUNTY SURVEYOR
DOUGLAS COUNTY, ORE

PLAT

SHOWING A SURVEY IN THE N 1/2 OF SECTION 34,
T. 31 S., R. 2 W., W. M., DOUGLAS COUNTY, OREGON.

DECEMBER 26, 1977

SCALE: 1" = 400'

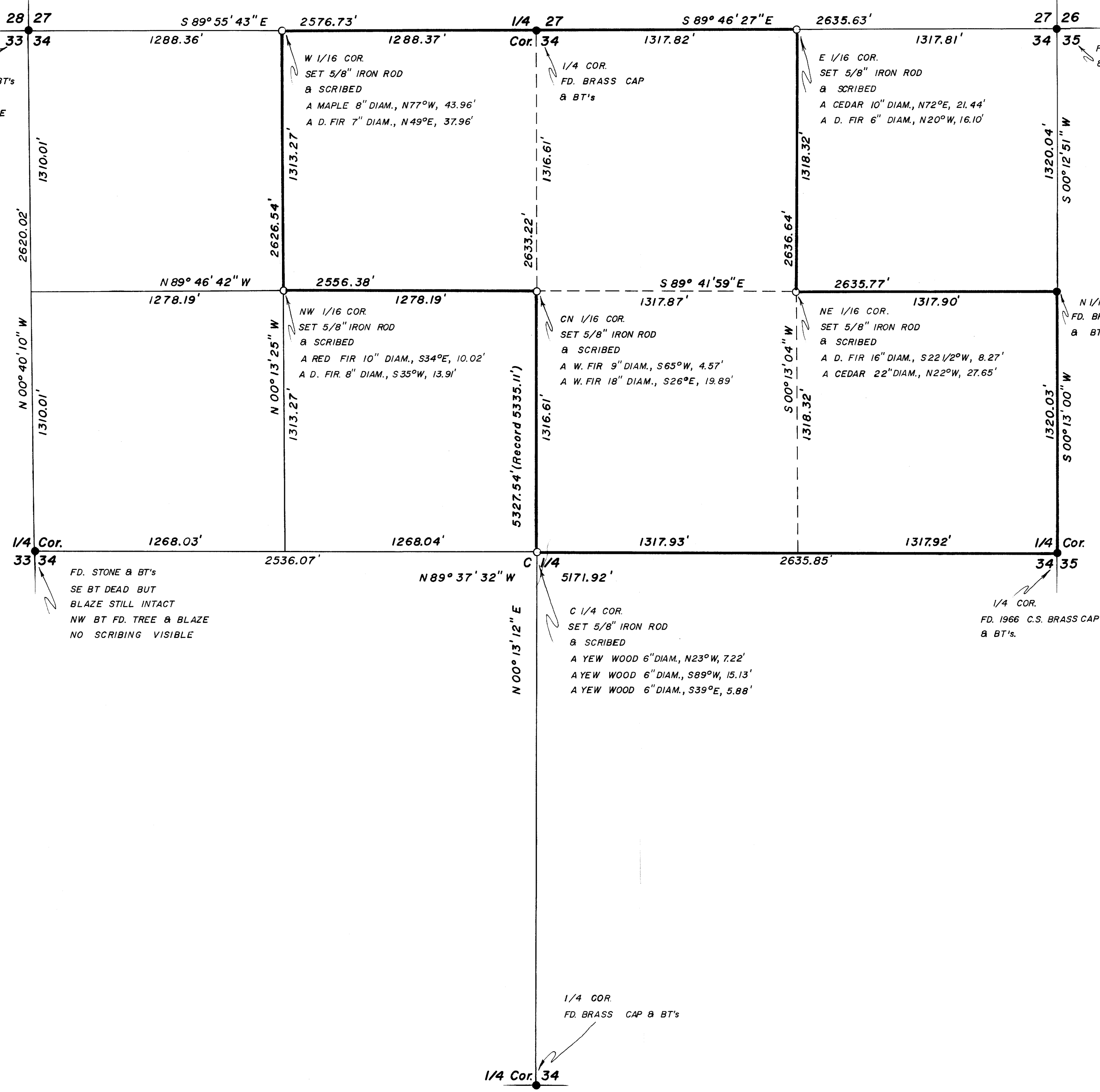
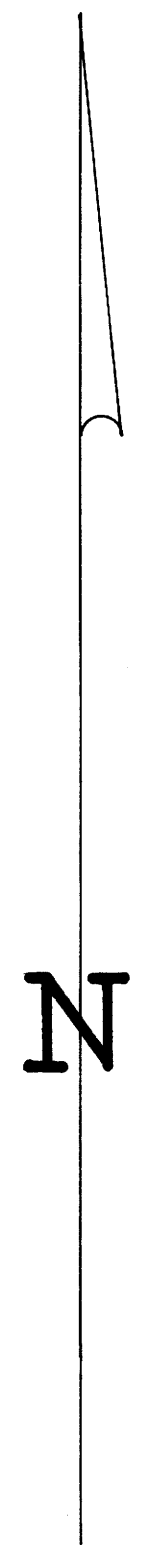
SURVEYED FOR:
WESTBROOK, INC.
RESERVATION RANCH
P. O. BOX 75
SMITH RIVER, CALIF.

SURVEYED BY:
GERALD V. NYGREN & ASSOC.
421 NE 6th STREET
GRANTS PASS, OREGON

○ SET 5/8" X 30" IRON ROD
● FOUND IRON MONUMENT
BEARINGS ARE BASED ON THE
EAST LINE OF THE NE 1/4 OF
THE NE 1/4 BY PREVIOUS SURVEY

REGISTERED
PROFESSIONAL
LAND SURVEYOR

Gerald V. Nygren
OREGON
GERALD V. NYGREN
AUGUST 22, 1975
1035



FD. FIR TREE
AT COR PT. BLAZED
ON FOUR SIDES & BT'S
WITH BRASS CAP
ALONG SOUTH SIDE

FD. STONE & BT'S
SE BT DEAD BUT
BLAZE STILL INTACT
NW BT FD. TREE & BLAZE
NO SCRIBING VISIBLE

1/4 COR.
FD. BRASS CAP & BT'S

1/4 COR.
FD. 1966 C.S. BRASS CAP
& BT'S

C.S. 58/158
MAP FILE M168 - 21

C.S. 58/158(N)
MAP FILE M168 - 21

M 68-21



GERALD V. NYGREN & ASSOCIATES
LAND SURVEYING
421 N.E. 6th STREET
GRANTS PASS, OR 97526
476-7034

FILED
RECEIVED *vh*

JAN 4 1978

COUNTY SURVEYOR
DOUGLAS COUNTY, ORE.

SURVEY NARRATIVE to comply with Paragraph 209.250 O.R.S.

DATE: December 26, 1977

SURVEYED FOR: Westbrook, Inc.
Reservation Ranch
P.O. Box 75
Smith River, Calif. 95567

PURPOSE: To survey a parcel of land situated in the North 1/2 of Section 34, Township 31 South, Range 2 West, Willamette Meridian, Douglas County, Oregon.

PROCEDURE: Beginning at the Section Corner common to Sections 27, 26, 34, 35 at which I found a 1966 County Surveyor's Brass Cap from which I found
A Laurel 9ins. diam., South 29 1/2° East, 7.2 feet.
A D. Fir 10ins. diam., South 31° West, 31.0 feet.
A D. Fir 8ins. diam., North 86° East, 15.5 feet.
A Pine Snag 12ins. diam., North 23° East, 700 feet.
A Fir Stump 18ins. diam., South 79° East, 60.1 feet.
A Madrone 20ins. diam., South 38° West, 54.8 feet.
A Pine 44ins. diam., North 65° West, 10.6 feet.
thence I surveyed South 00° 12' 51" West, 1320.04 feet to the North 1/16 corner common to Sections 34 and 35 at which I found a 3" Brass Cap from which I found
An Inc. Cedar 16ins. diam., North 46 1/2° East, 18.2 feet.
A D. Fir 18ins. diam., North 81° West, 38.0 feet.
thence I surveyed South 00° 13' 00" West, 1320.03 feet, to 1/2 Corner common to Sections 34 and 35, at which I found a 1966 County Surveyor's Brass Cap with iron stone along side from which I found
A D. Fir 42ins. diam., North 28° West, 18.6 feet.
A Cedar 24ins. diam., South 87° West,
A Fir Stump 20ins. diam., North 38° East, 11.2 feet
thence I surveyed North 89° 37' 32" West, 5171.92 feet to the 1/4 Corner common to Sections 34 and 33 at which I found a slate stone with 1/4 on West face from which
A Fir 7ins. diam., South 61° East, 10.56 feet tree is dead but blaze intact.
A Fir 24ins. diam., North 30° West, 6.6 feet with blaze but no scribing visible.
thence I surveyed North 00° 40' 10" West, 2620.02 to the Section Corner common to Sections 28, 27, 33, 34, at the corner point I found a white Fir 21ins. diam., from which I found
A W. Fir 18ins. diam., North 40° East, 22.4 feet.
A W. Fir 27ins. diam., North 68° West, 41.6 feet.
A D. Fir 13ins. diam., South 50° East, 35.6 feet.
A W. Fir 14ins. diam., South 31° West, 31.0 feet
Brass Cap along South side of Corner Tree.
thence I surveyed South 89° 55' 43" East, 2576.73 feet to 1/4 Corner common to Sections 27 and 34 at which I found 1966 County Surveyor's Brass Cap with trees of record dead; thence I surveyed South 00° 13' 12" West, 5327.54 feet to the 1/4 Corner common to Section 34 only at which I found a Brass Cap, From which I found
A Madrone 17ins. diam., North 5 1/2° West, 31.8 feet.
A D. Fir 39ins. diam., South 70° East, 23.0 feet.

REGISTERED
PROFESSIONAL
LAND SURVEYOR

Gerald V. Nygren
OREGON
GERALD V. NYGREN
AUGUST 22, 1975
1035

C.S. File No. 58/150-1A



GERALD V. NYGREN & ASSOCIATES
LAND SURVEYING
 421 N.E. 6th STREET
 GRANTS PASS, OR 97526
 476-7034

I intersected the West $\frac{1}{4}$ and the East $\frac{1}{4}$, with the North $\frac{1}{4}$ and South $\frac{1}{4}$, of Section 34, to establish the center $\frac{1}{4}$ and at the corner point I set a 5/8" iron rod and scribed

A Yew Wood 6ins. diam., North 23° West, 7.22 feet.

A Yew Wood 6ins. diam., South 89° West, 15.13 feet.

A Yew Wood 6ins. diam., South 39° East, 5.88 feet.

thence from the Center $\frac{1}{4}$ Corner I surveyed North 00° 13' 12" East, 1316.61 feet, to the Center North 1/16 corner at the corner point I set a 5/8" iron rod and scribed

A White Fir 9ins. diam., South 65° West, 4.57 feet.

A White Fir 18ins. diam., South 26° East, 19.89 feet.

thence I surveyed North 89° 46' 42" West, 1278.19 feet, to the Northwest 1/16 Corner at the corner point I set a 5/8" iron rod and scribed

A Red Fir 10ins. diam., South 34° East, 10.02 feet.

A D. Fir 8ins. diam., South 35° West, 13.91 feet.

thence I surveyed North 00° 13' 25" West, 1313.27 feet, to the West 1/16 corner common to Sections 34 and 27 at the corner point I set a 5/8" iron rod and scribed

A Maple 8ins. diam., North 77° West, 43.96 feet.

A D. Fir 7ins. diam., North 49° East, 37.96 feet.

thence I returned to the $\frac{1}{4}$ corner common to Sections 34 and 27 and surveyed 589° 46' 27" East, 1317.82 feet to the East 1/16 common to Sections 34 and 27 at the corner point I set a 5/8" iron rod and scribed

A Cedar 10ins. diam., North 72° East, 21.44 feet

A D. Fir 6ins. diam., North 20° West, 16.10 feet

thence I surveyed South 00° 13' 04" West, 1318.32 feet to the Northeast 1/16 at the corner point I set a 5/8" iron rod and scribed

A D. Fir 16ins. diam., South 22½° West, 8.27 feet

A Cedar 22ins. diam., North 22° West, 27.65 feet

thence I surveyed South 89° 58' 01" East, 1317.90 feet to the North 1/16 corner common to sections 34 and 35 to complete my survey.

Meridian is based on the East line of the Northeast $\frac{1}{4}$ of the Northeast $\frac{1}{4}$ by previous survey.

REGISTERED
 PROFESSIONAL
 LAND SURVEYOR

Gerald V. Nygren

OREGON
 GERALD V. NYGREN
 AUGUST 22, 1975
 1035