

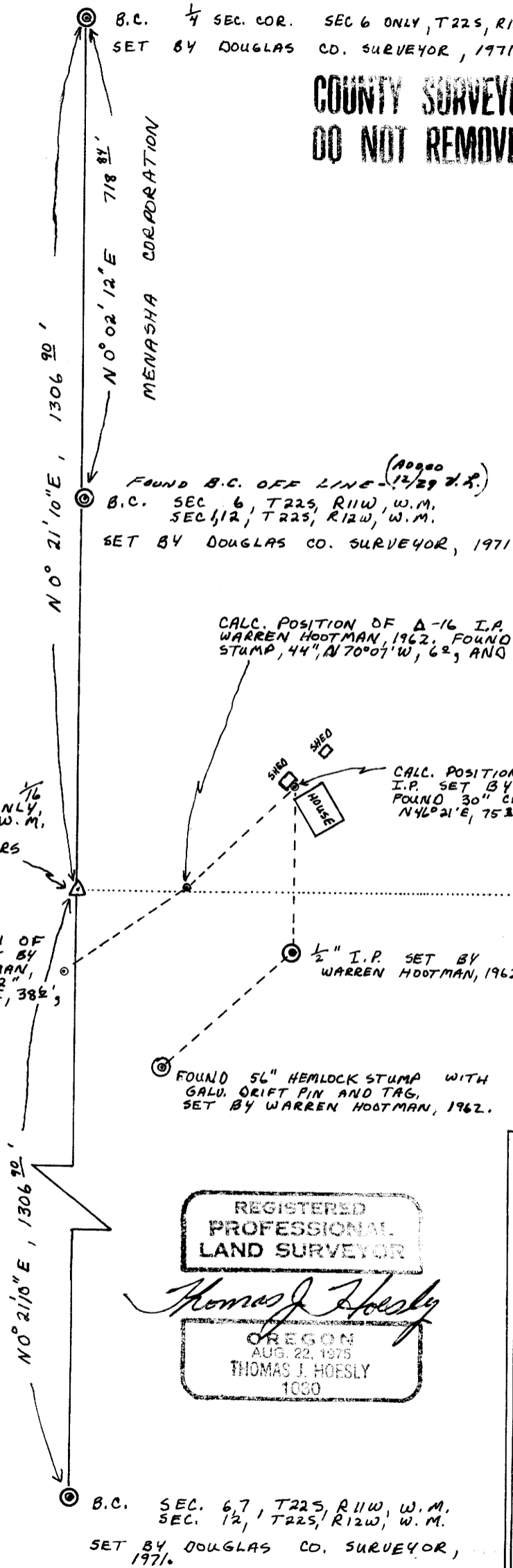
FILED
RECEIVED

DEC 29 1977

COUNTY SURVEYOR
DOUGLAS COUNTY, ORE.

COUNTY SURVEYORS FILE DATA
DO NOT REMOVE FROM OFFICE

INTERNATIONAL PAPER



B.C. 1/4 SEC. COR. SEC 6 ONLY, T22S, R11W, W.M.
SET BY DOUGLAS CO. SURVEYOR, 1971

FOUND B.C. OFF LINE - (10080 12/29 7.2.)
B.C. SEC 6, T22S, R11W, W.M.
SEC 12, T22S, R12W, W.M.
SET BY DOUGLAS CO. SURVEYOR, 1971

CALC. POSITION OF A-16 I.P. SET BY
WARREN HOOTMAN, 1962. FOUND O. FIR
STUMP, 44", N70°07'W, 62', AND TAG.

CALC. POSITION OF A-17
I.P. SET BY WARREN HOOTMAN, 1962.
FOUND 30" CEDAR STUMP
N46°21'E, 75'.

SET 3/4" I.P. 1/6
COR. SEC 6 ONLY,
T22S, R11W, W.M.
14" O. FIR BEARS
S43°E, 72'

CALC. POSITION OF
A-15 I.P. SET BY
WARREN HOOTMAN,
1962. FOUND 42"
MAPLE, N10°07'E, 382',
WITH TAG.

FOUND 56" HEMLOCK STUMP WITH
GALV. DRIFT PIN AND TAG,
SET BY WARREN HOOTMAN, 1962.

REGISTERED
PROFESSIONAL
LAND SURVEYOR

Thomas J. Hoessly

OREGON
AUG. 22, 1975
THOMAS J. HOESLY
1030

B.C. SEC. 6 7, T22S, R11W, W.M.
SEC. 12, T22S, R12W, W.M.
SET BY DOUGLAS CO. SURVEYOR,
1971.

MENASHA CORPORATION

INTERNATIONAL PAPER

MENASHA CORPORATION

TRAVERSE OF SOUTH 1/2 OF WEST
LINE OF SEC 6, T22S, R11W, W.M.

DATE: 11-28-77

SCALE: 1" = 200'

LIETZ TRANSIT & 300' CHAIN

BASIS OF BRG: PER DOUGLAS CO. SURVEYOR
FILE M 42-27

- ⊙ EVIDENCE FOUND
- ⊙ CORNERS FOUND
- △ CORNERS SET