

COUNTY SURVEYORS FILE DATA
DO NOT REMOVE FROM OFFICE

SURVEY OF DIVIDING LINE
IN
SECTION 26 T.28S. R.6W. W.M.

FOR
GORDON BURNETT

Umpqua Surveying Co.
Myrtle Creek, Oregon

DEC. 1977

23	24
26	25

T.28S. R.6W

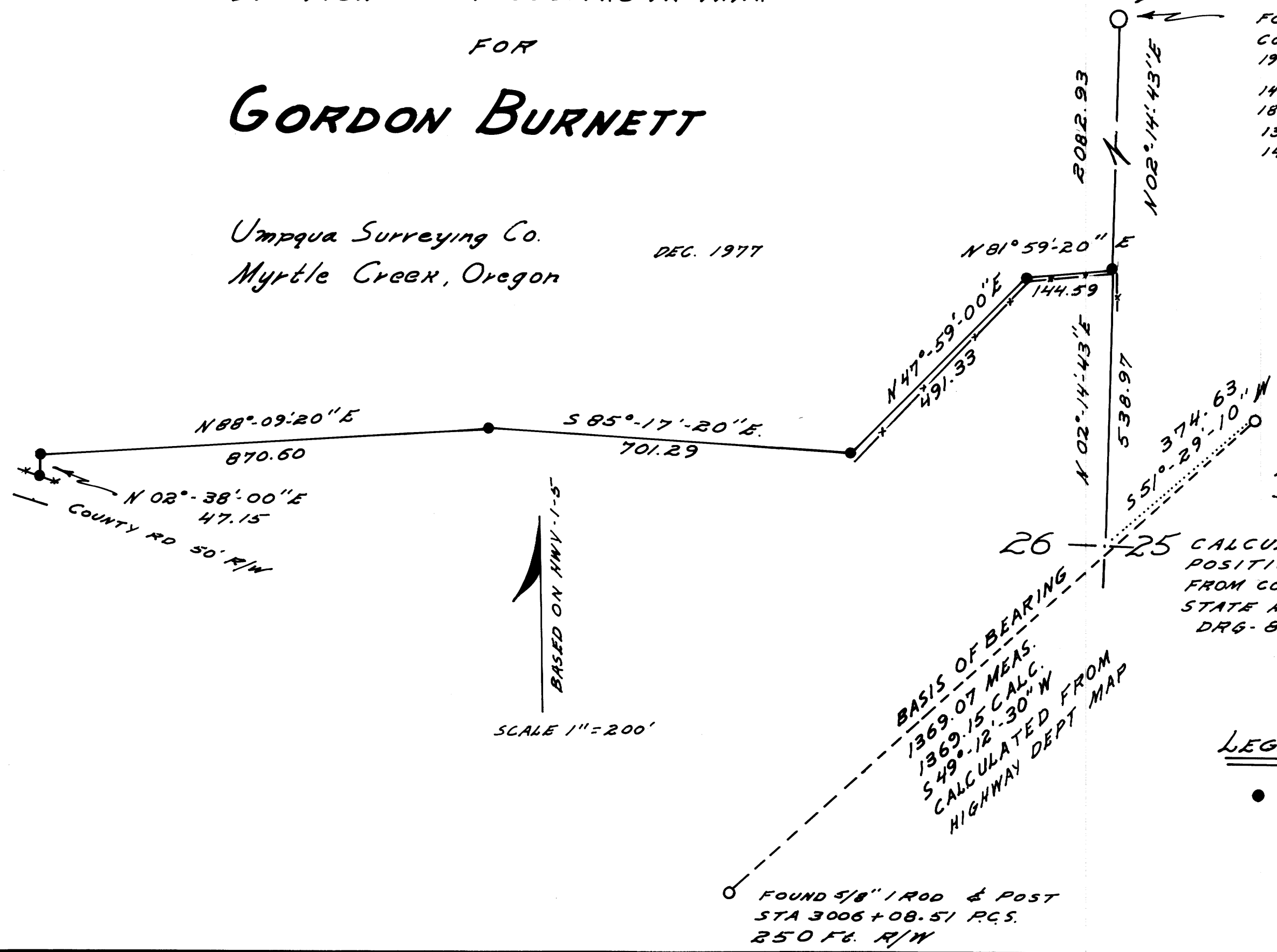
FOUND BRASS CAP
COUNTY SURVEYOR'S OFFICE
1961 & BTS

14" OAK S10°30'E 53
18" MADRONE S15°30'W.160
13" OAK N57°W 320
14" MADRONE N45°E 460

REGISTERED
OREGON
LAND SURVEYOR

William J. Ruppert

JULY 12, 1968
WILLIAM J. RUPPERT
866



FOUND 5/8" ROD
& POST MARKED
2995+22.40 P.C.S.
375 FT. R/W

26 25 CALCULATED
POSITION OF 1/4 CORNER
FROM COORDINATES OF
STATE HIGHWAY MAP
DRG-8B-29-3

LEGEND

● SET 3/4" ROD

FOUND 5/8" ROD & POST
STA 3006+08.51 P.C.S.
250 FT. R/W

BASIS OF BEARING
1369.07 MEAS.
1369.15 CALG.
549°-12'-30" W
CALCULATED FROM
HIGHWAY DEPT MAP

BASED ON HWY 1-5

SCALE 1" = 200'

MAP NO. M68-16

M68-16