

41-89W

COUNTY SURVEYORS FILE DATA  
DO NOT REMOVE FROM OFFICE

SURVEY IN SEC. 24, T27S, R6W. W.M.  
ROSEBURG, ORE.

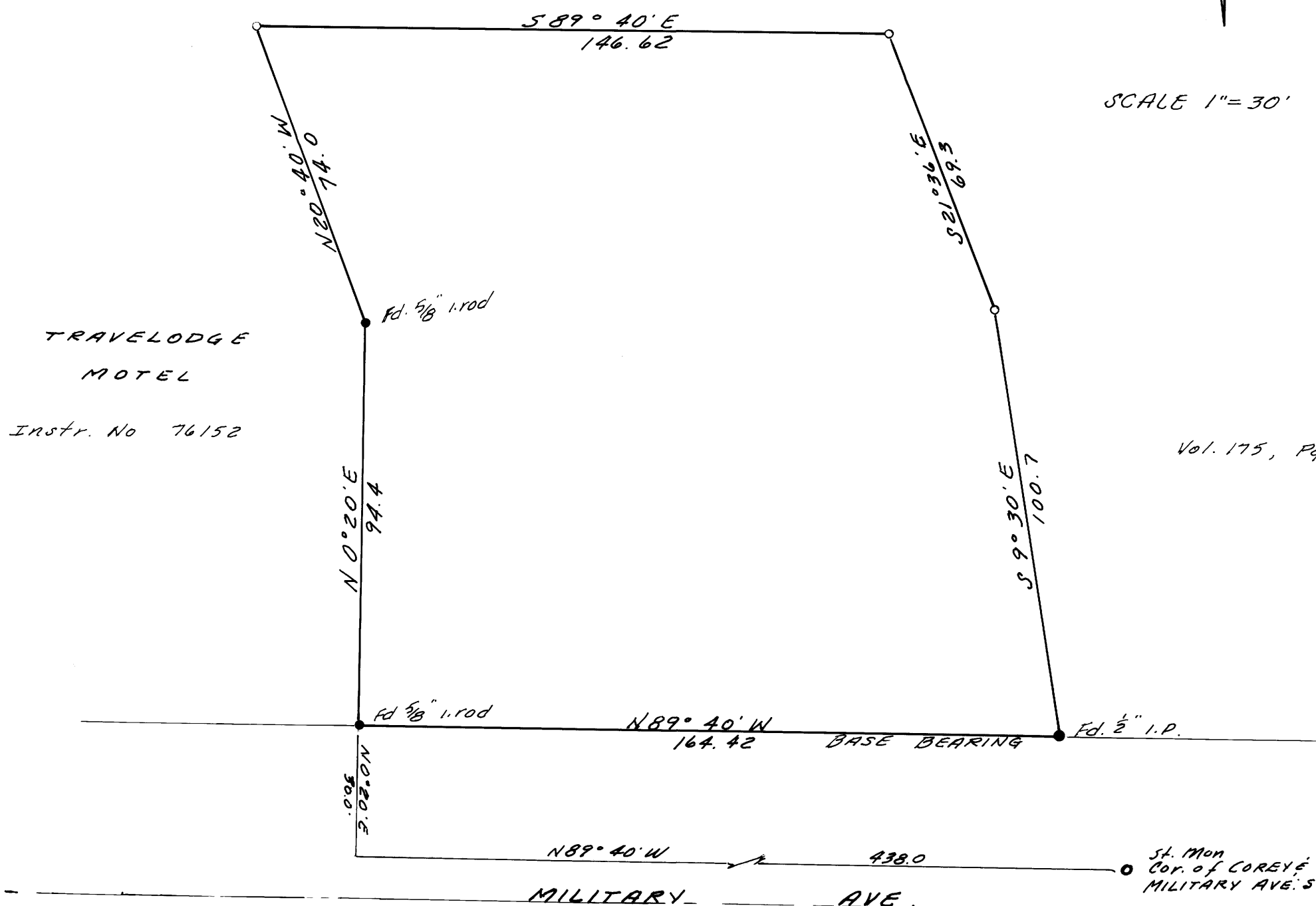
SURVEYED FOR - FIELDS & ENDSLEY, INC.  
SURVEYED BY - W. S. BARNES

DEC. 1977

FILED  
RECORDED  
INDEXED  
DEC 19 1977  
CLERK OF COUNTY



SCALE 1"=30'



- Monuments Found.
- $\frac{5}{8}$ " Iron Rods Set.

REGISTERED  
PROFESSIONAL  
LAND SURVEYOR

*W. S. Barnes*

OREGON  
SEPT. 23, 1977  
WILLIAM S. BARNES  
1931

MAP FILE M 68-74