

COUNTY SURVEYORS FILE DATA
DO NOT REMOVE FROM OFFICE

FILED ✓
RECEIVED w

DEC 8 1977

COUNTY SURVEYOR
DOUGLAS COUNTY, ORE.

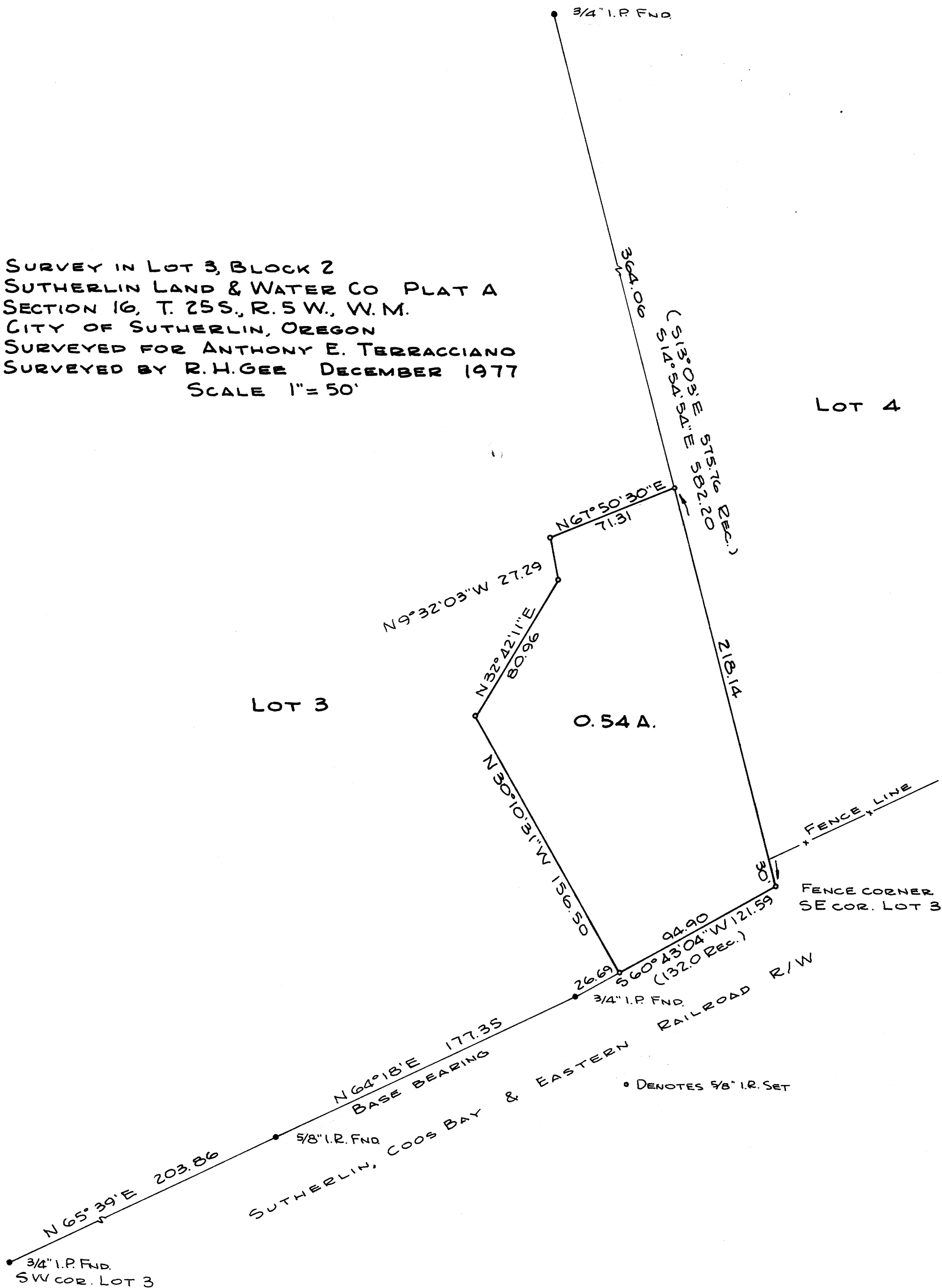
✓

SURVEY IN LOT 3, BLOCK 2
SUTHERLIN LAND & WATER CO PLAT A
SECTION 16, T. 25S., R. 5W., W.M.
CITY OF SUTHERLIN, OREGON
SURVEYED FOR ANTHONY E. TERRACCIANO
SURVEYED BY R.H.GEE DECEMBER 1977
SCALE 1" = 50'

LOT 4

LOT 3

0.54 A.



REGISTERED
PROFESSIONAL
LAND SURVEYOR

R.H. Gee

OREGON
SEPTEMBER 23, 1977
R. H. GEE
1191