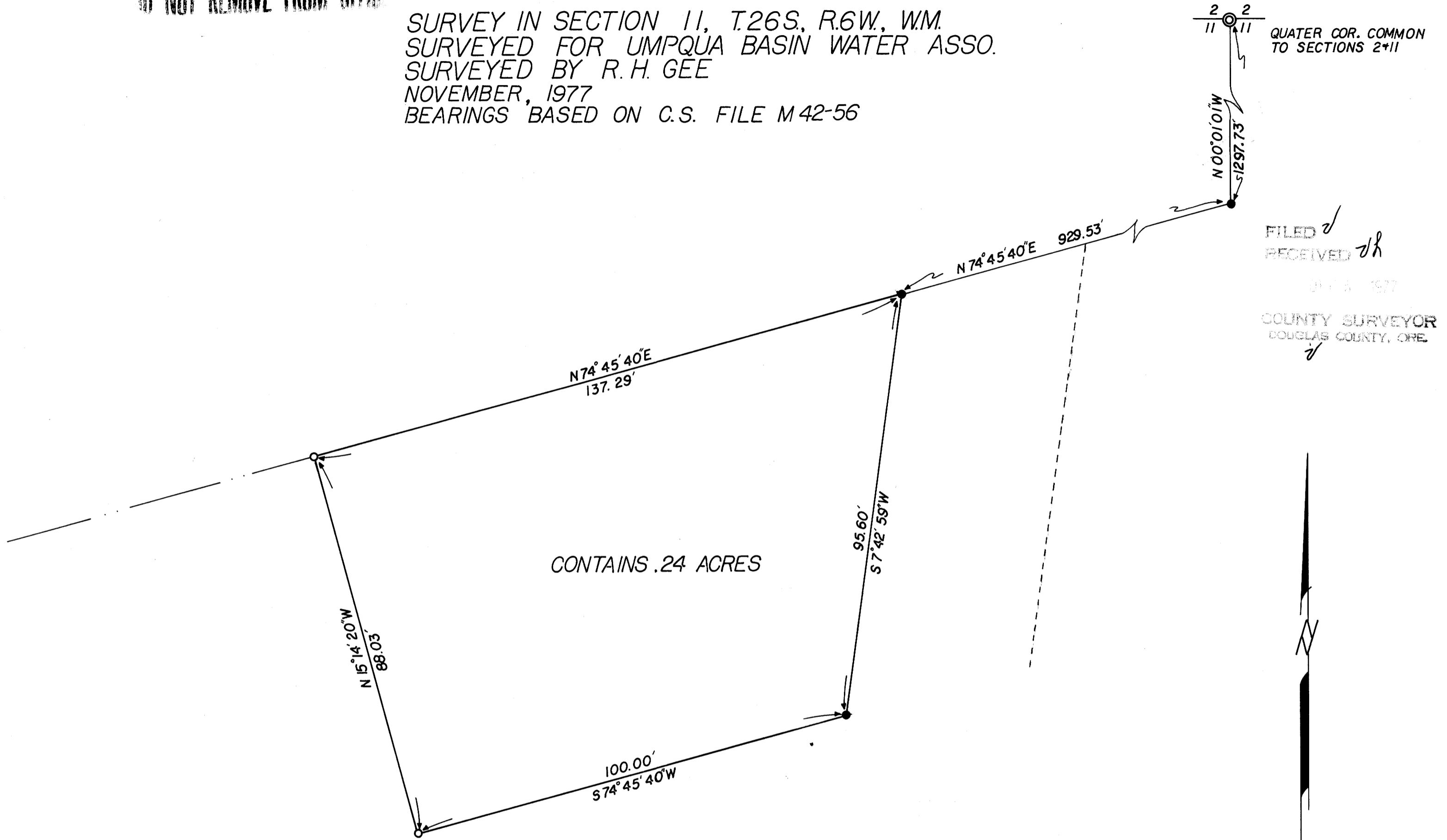


COUNTY SURVEYORS FILE DATA  
DO NOT REMOVE FROM OFFICE

SURVEY IN SECTION 11, T.26S., R.6W., W.M.  
SURVEYED FOR UMPQUA BASIN WATER ASSO.  
SURVEYED BY R. H. GEE  
NOVEMBER, 1977  
BEARINGS BASED ON C.S. FILE M 42-56



QUATER COR. COMMON  
TO SECTIONS 2+11

FILED  
RECEIVED  
11/13/1977  
COUNTY SURVEYOR  
DOUGLAS COUNTY, ORE.



SCALE: 1" = 20'  
○ DENOTES SET 5/8" I.R.  
● DENOTES FOUND 5/8" I.R.

REGISTERED  
PROFESSIONAL  
LAND SURVEYOR  
R. H. Gee  
OREGON  
SEPTEMBER 1977  
R. H. GEE  
1101

MAP FILE M 42-56-69

18X24 PRINTED ON NO. 1000H CLEARPRINT

MAP FILE M 42-56-69