

# SURVEY TO SET PROPERTY CORNERS

IN SECTION 18, T.27S. R.5W.W.M.

FOR: BILL HAYNES

BY: C & G ENGINEERING INC.

NOVEMBER 1977 - SCALE: 1"=20'

COUNTY SURVEYORS FILE DATA  
DO NOT REMOVE FROM OFFICE

FILED  
RECEIVED

NOV 28 1977

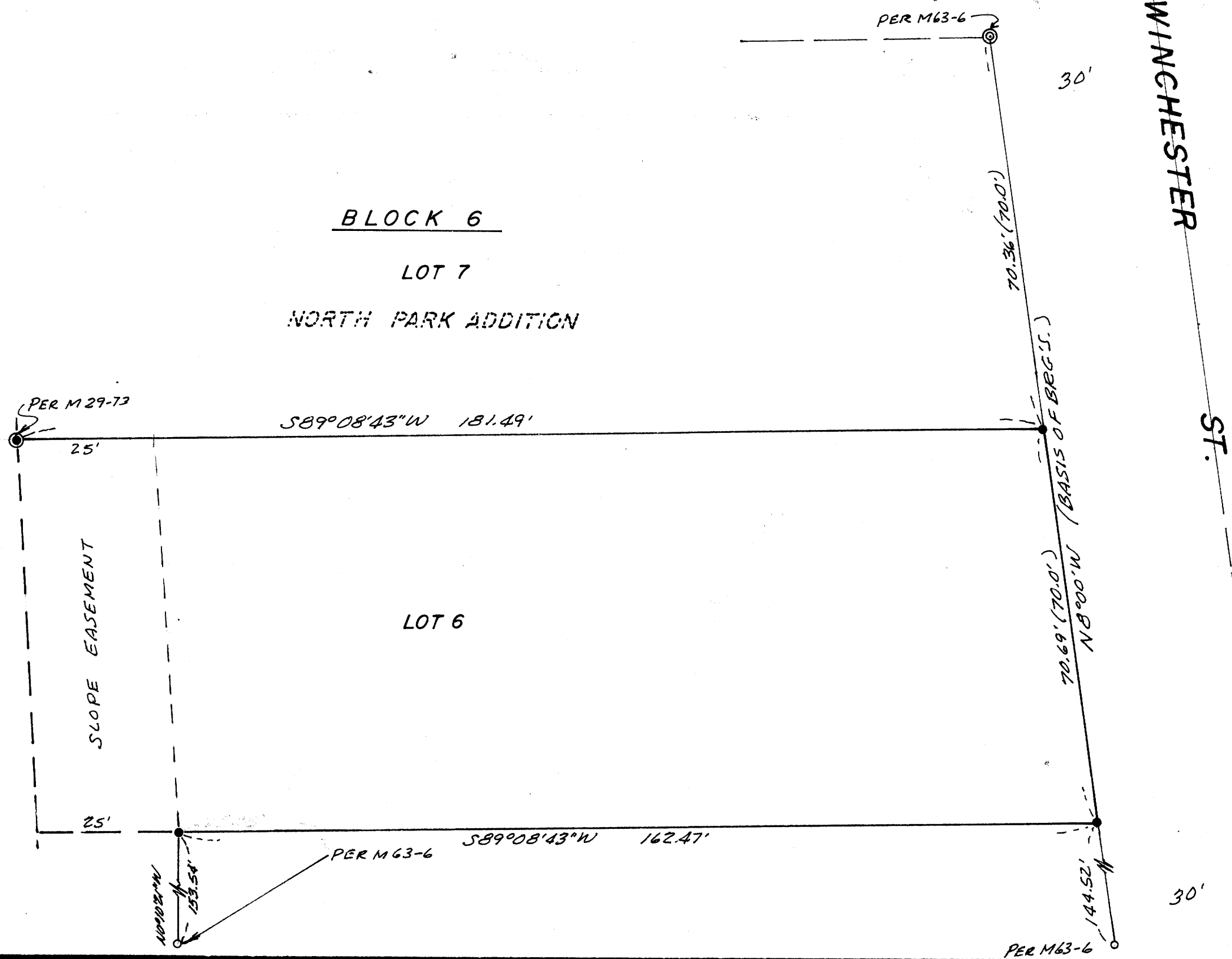
COUNTY SURVEYOR  
DOUGLAS COUNTY, ORE.

N.E. STEPHENS

BLOCK 6

LOT 7

NORTH PARK ADDITION



### LEGEND

- — Set 1/2" iron rod
- — Found 1/2" iron rod
- ⊙ — Found 5/8" iron rod
- ⊗ — Found 3/4" iron rod

REGISTERED  
PROFESSIONAL  
LAND SURVEYOR

*Glenn S. Saughman*

OREGON  
JULY 16, 1981  
GLENN S. SAUGHMAN  
536

BASED ON M63-6

6140.0000-87

MAP FILE: M63-6-58

MAP FILE: M63-6-58