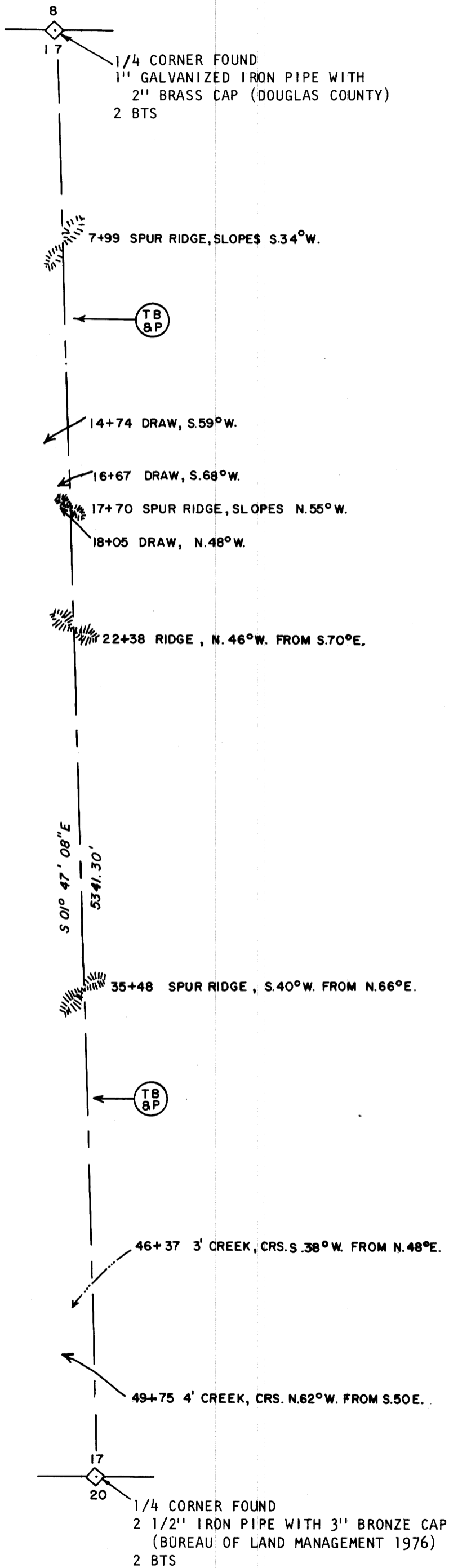
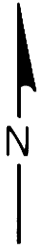


FILED ✓
RECEIVED ✓

NOV 28 1977

COUNTY SURVEYOR
DOUGLAS COUNTY, ORE.

✓



REGISTERED
PROFESSIONAL
LAND SURVEYOR

Lloyd D. Smith

OREGON
LLOYD D. SMITH
1101

SOLAR OBSERVATION

AS TAKEN BY: W. METCALF FOR SECTION 8, T.32S., R.6W., W.M.
 MAGNETIC VARIATION 19°48' EAST
 DATE MAY 6, 1974
 STANDARD TIME 2:02:31 P.M.
 LOCAL TIME 1:48:45 P.M.
 SUN'S DECLINATION N16°37'26"
 REF. & PAR. CORRECTION -0'32"
 LATITUDE N42°47'48"
 SUN'S ALTITUDE 54°38'30"
 PLACE OF OBSERVATION S18°35'07"E
 302.73' FROM CORNER OF SECTIONS 7, 8, 17, & 18, T.32S., R.6W., W.M.

LEGEND

CRS = COURSE
 TB & P = TRUE BLAZED AND POSTED

FOR DETAILED REPORT ON FOUND CORNERS SEE COUNTY RECORDS.
 ACCESSORIES MARKED ACCORDING TO "MANUAL OF INSTRUCTIONS
 FOR THE SURVEY OF THE PUBLIC LANDS OF THE U.S."

SURVEY FOR:
 STATE OF OREGON-DEPARTMENT OF FORESTRY
SECTION 17, T.32S., R.6W., W.M.
 DOUGLAS COUNTY, OREGON
 THEODOLITE AND TAPE SURVEY BY: D. SMITH, J. McINTOSH,
 R. JOHNSON AND D. BUCHHOLZ
 DRAWN BY: J. McINTOSH
 OCTOBER 25, 1977
 SCALE: 1" = 400'

COUNTY SURVEYORS FILE DATA
 DO NOT REMOVE FROM OFFICE

A-88
 11-8-77
 LAIRD CASE