

COUNTY SURVEYORS FILE DATA
DO NOT REMOVE FROM OFFICE

SURVEY IN SEC. 36, T265, R4W, W11

Survey for: Richard Ullsmith

Survey by: B.H.W. Eng & Surveying

October, 1977

Scale: 1" = 200'

FILED ✓
RECEIVED *WA*

NOV 27 1977

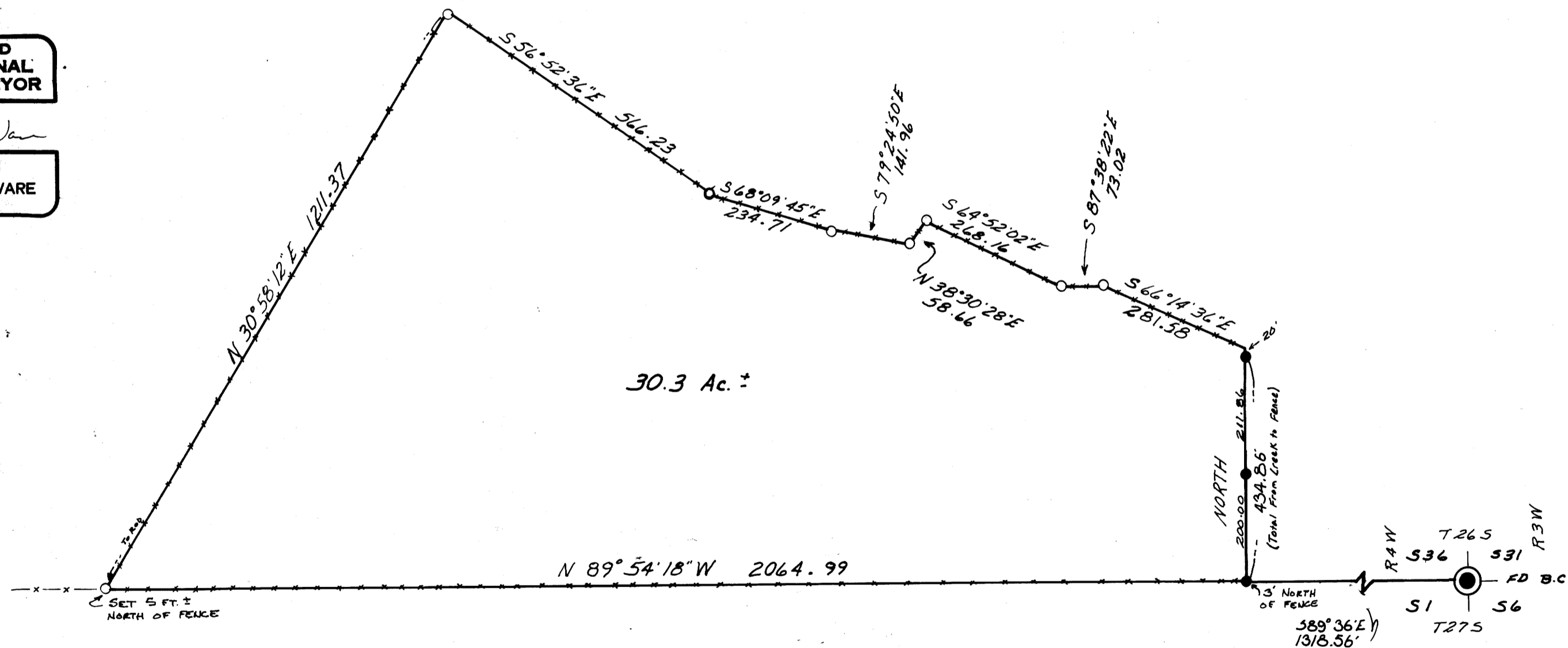
COUNTY SURVEYOR
DOUGLAS COUNTY, ORE.

✓

REGISTERED
PROFESSIONAL
LAND SURVEYOR

Romanso E. Ware

OREGON
NOV. 16, 1909
ROMANSO E. WARE
1005



MAP FILE M67-52

MAP FILE M67-52