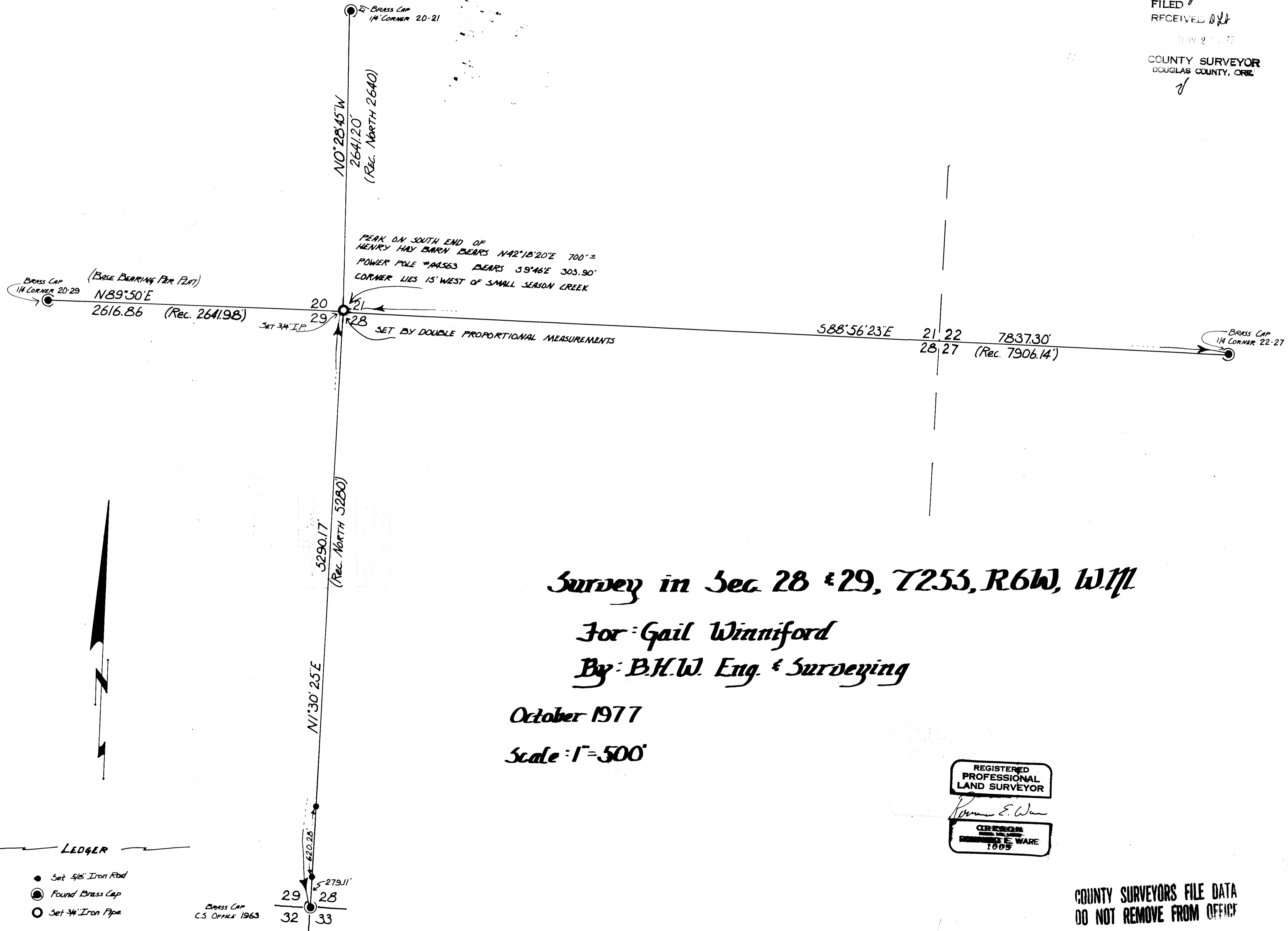


FILED
RECEIVED

NOV 21 1977

COUNTY SURVEYOR
DOUGLAS COUNTY, ORE

MAP FILE M67-51



Survey in Sec 28 & 29, T25S, R6W, W1M

For: Gail Winniford

By: B.H.W. Eng. & Surveying

October 1977

Scale: 1" = 500'

REGISTERED
PROFESSIONAL
LAND SURVEYOR

Robert E. Ware

CREATED
BY
ROBERT E. WARE
1985

COUNTY SURVEYORS FILE DATA
DO NOT REMOVE FROM OFFICE

M67-51

MAP FILE M67-51