

MAP FILE M67-42

FILED
RECEIVED MLL
COUNTY SURVEYOR
CLATSOP COUNTY, ORE.
7

E 1/16 COR.
BASIS OF BEARINGS
S89°38'E 1310.56' (S89°38'E 1311.31' PER M2-39)
6 5
7 8

TIE N65°45'30"E 1094.13'

BASED ON M2-39

SET STEEL
FENCE POST
IN N-S FENCE
LINE FOR
DIRECTION ONLY.
DO NOT USE AS
A PROPERTY
CORNER

WEST 342±

GO. ROAD NO. 24
N15°24'30"W (2.840)
N15°24'30"W (2.840)

9.5± ac.

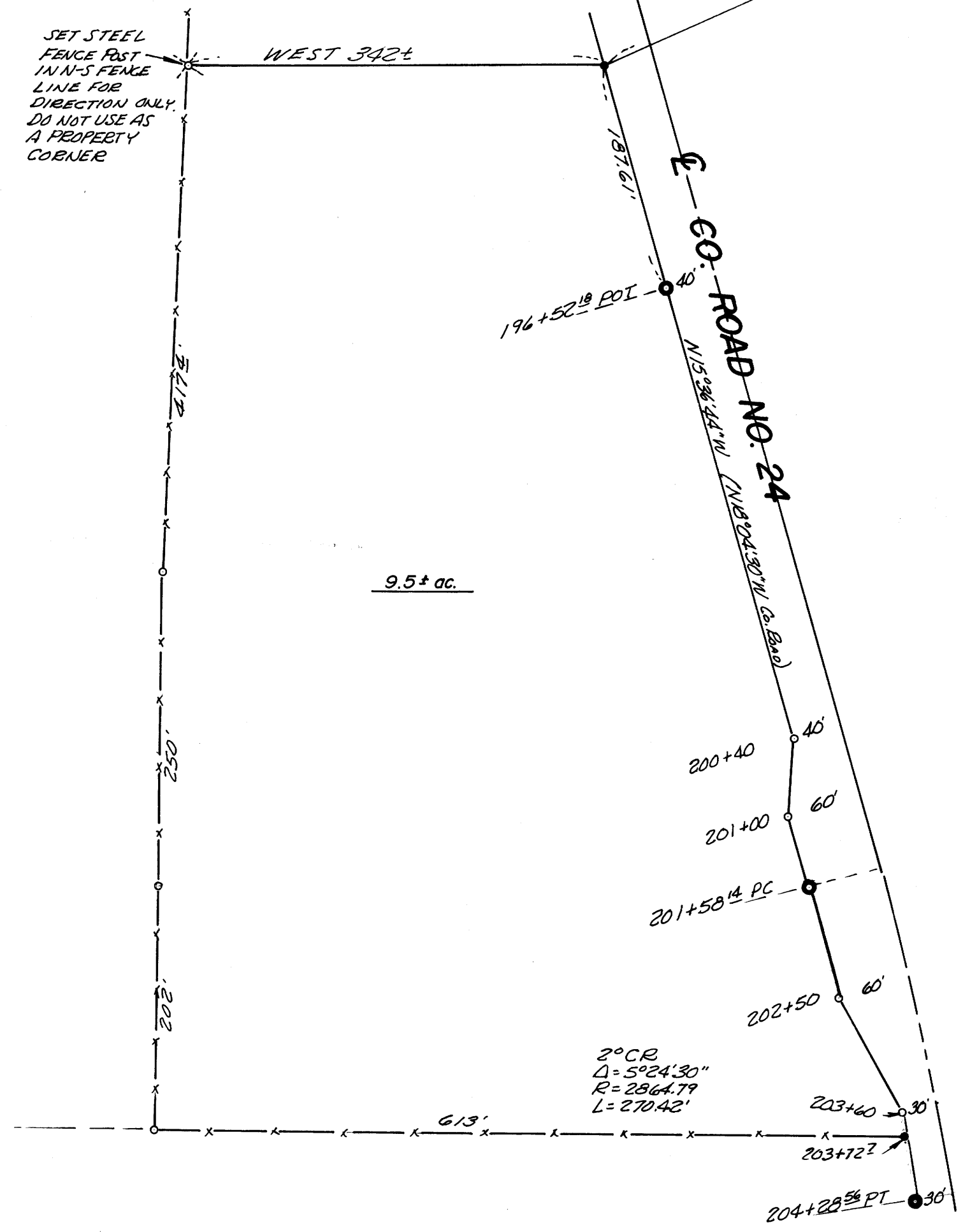
LEGEND

- — Point not set
- — Set 1/2" iron rod
- ⊙ — Found 3/4" iron rod
- ⊗ — Found 1" iron pipe
- ⊕ — Found Brass cap

SURVEY IN SEC. 7, T.23S. R.5W. W.M.

FOR: EVERGREEN REALTY
BY: C & G ENGINEERING INC.

SEPTEMBER 1977 — SCALE: 1"=100'



REGISTERED
PROFESSIONAL
LAND SURVEYOR

Glenn S. Baughman

OREGON
JULY 14, 1961
GLENN S. BAUGHMAN
536

6150.0030

COUNTY SURVEYORS FILE DATA
DO NOT REMOVE FROM OFFICE

MAP FILE M67-42