

COUNTY SURVEYORS FILE DATA
DO NOT REMOVE FROM OFFICE

SURVEY FOR DEED DESCRIPTION IN SEC. 24, T28S, R8W, W.M.

SURVEYED FOR - PAUL BJELLAND
SURVEYED BY - W.S. BARNES

OCT. 1977

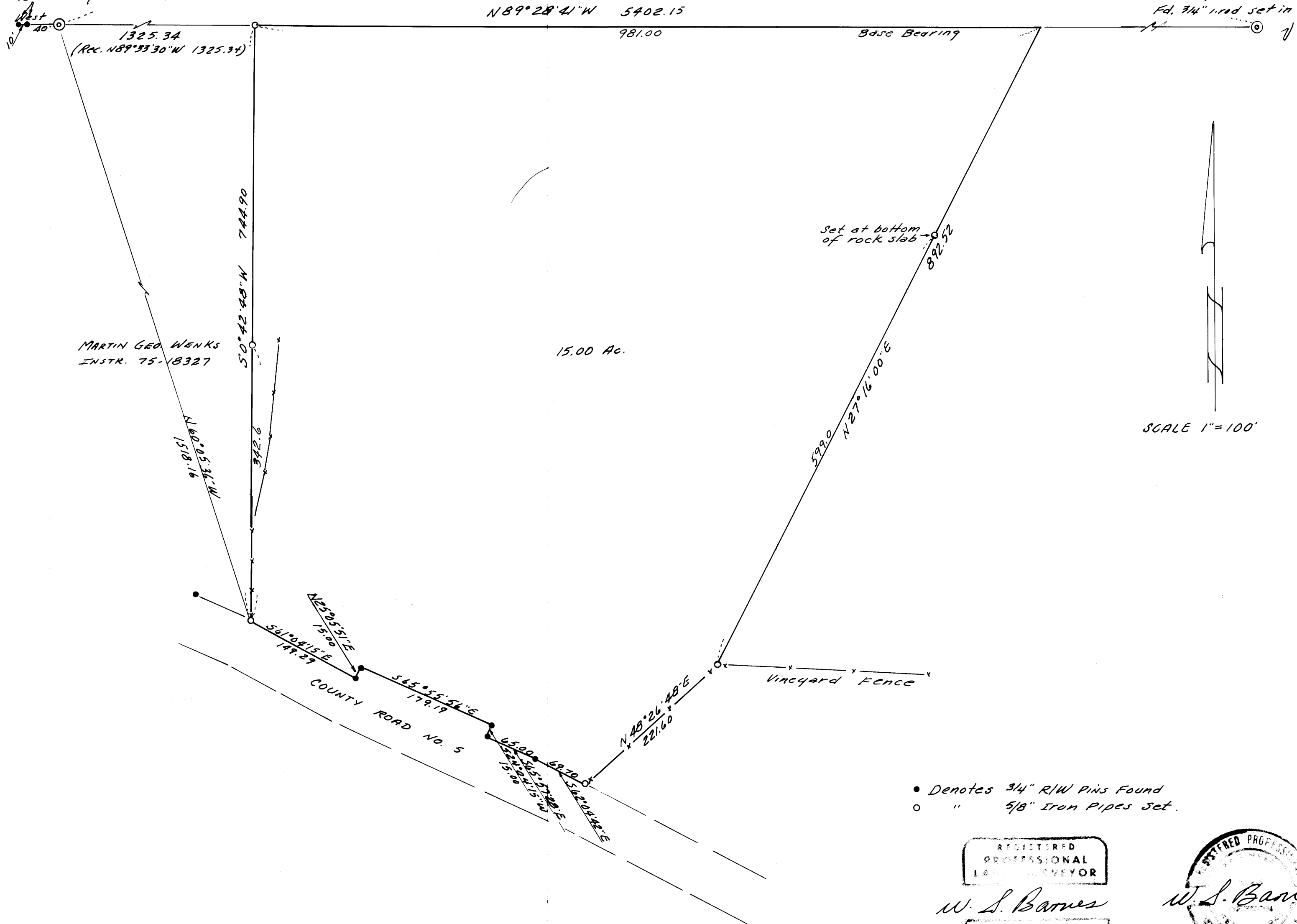
FILED
RECEIVED *200*

OCT 31 1977

COUNTY SURVEYOR
COLUMBIA COUNTY, MO.

E 1/4 Cor. Sec. 24
Fd. 3/4" iron set in rock.

W 1/4 cor. Sec. 24
set from record R.P.S.
Fd. 5/8" rods (No mon. set)



MARTIN GEO. WENKS
INSTR. 75-18327

15.00 Ac.

Set at bottom
of rock slab
822.52

SCALE 1"=100'

- Denotes 3/4" R/W Pins Found
- " " 5/8" Iron Pipes Set.

REGISTERED
PROFESSIONAL
LAND SURVEYOR

W. S. Barnes

WILLIAM S. BARNES
1930



M 67-29

M 67-29