

COUNTY SURVEYORS FILE DATA
DO NOT REMOVE FROM OFFICE

PLAT of Drains ADDITION TO DRAIN
 S4¹/₂ E4 Sect. 8, T.22 S., R.5 W. W.M.

Paul. S. OLP

Drain, Orcy.

FILED ✓
 RECEIVED ✓

OCT 18 1977

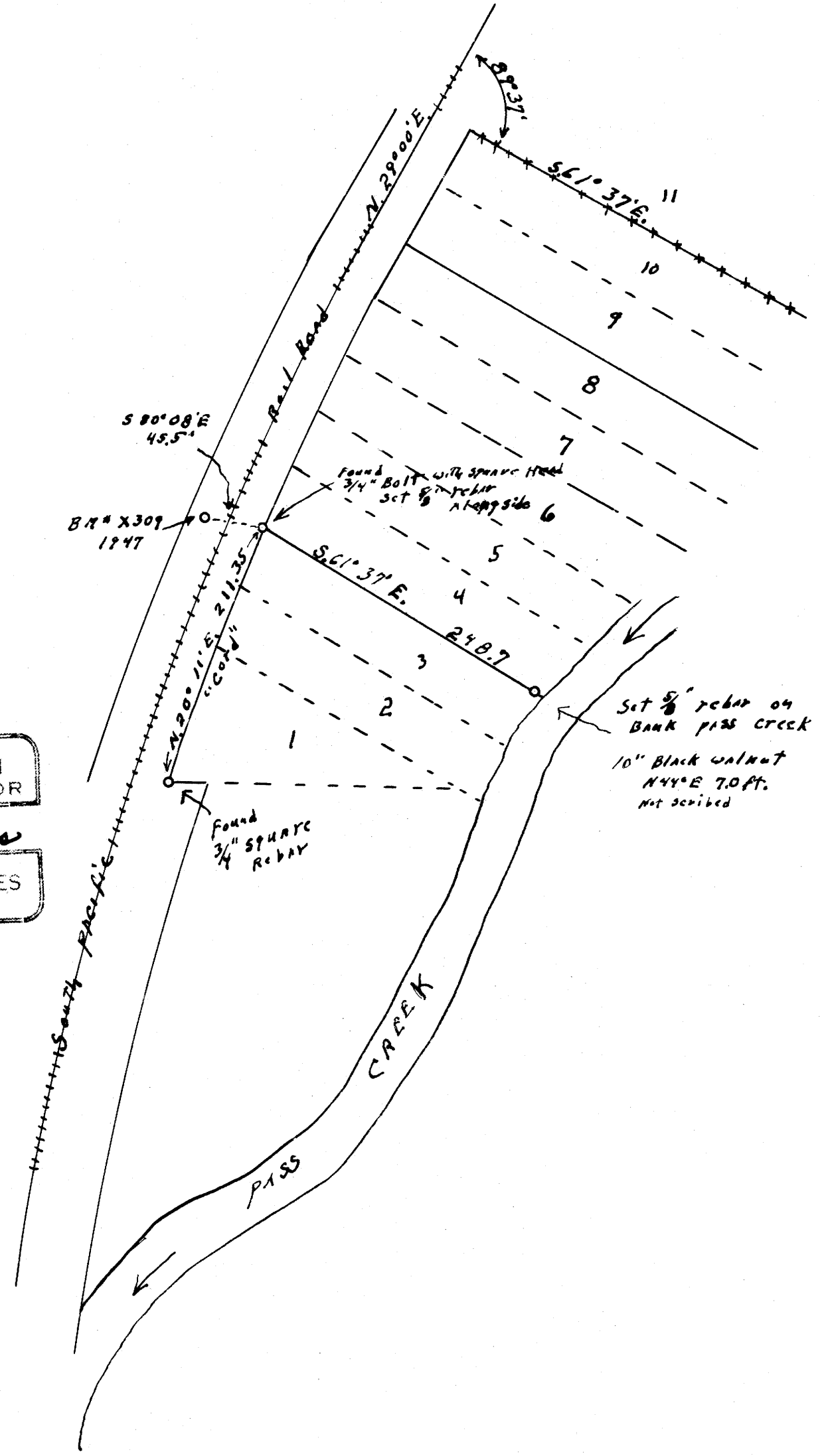
COUNTY SURVEYOR
 DOUGLAS COUNTY, ORE.

MAP FILE 2267-17

North
 Based on N29°00'E
 from point of Drains
 addition to Drain

1" = 100'
 August 1977

REGISTERED
OREGON
 LAND SURVEYOR
Wilford N. Haines
 MAY 7, 1948
WILFORD N. HAINES
 239



MAP FILE 2267-17