

SURVEY IN SEC. 21, T24S, R5W. W.M.

SURVEYED FOR - OLIVER STANDLEY

SEPT. 1977

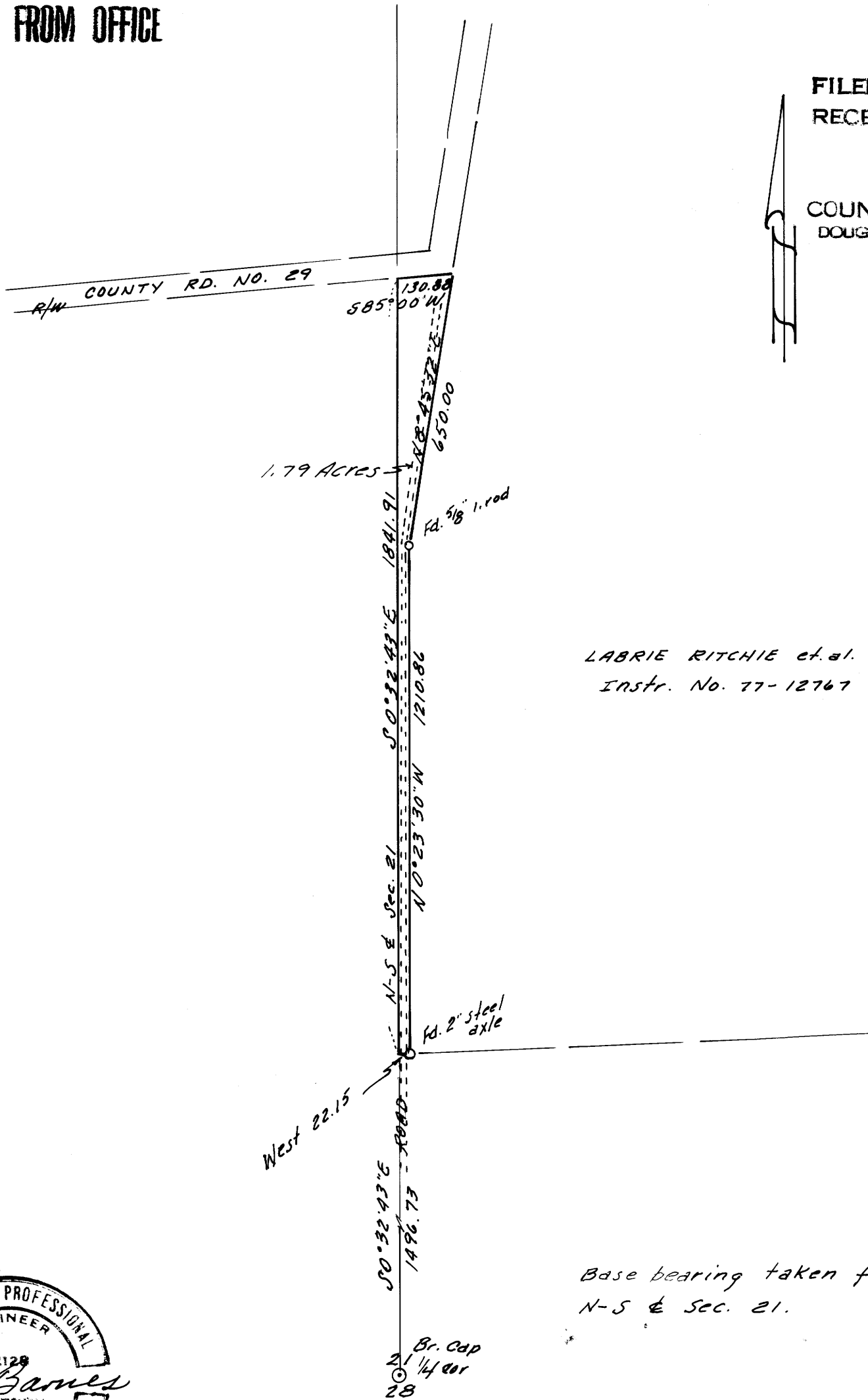
COUNTY SURVEYORS FILE DATA
DO NOT REMOVE FROM OFFICE

SCALE 1" = 300'

FILED ✓
RECEIVED ✓

OCT 11 1977

COUNTY SURVEYOR
DOUGLAS COUNTY, ORE.



LABRIE RITCHIE et al.
Instr. No. 77-12767

