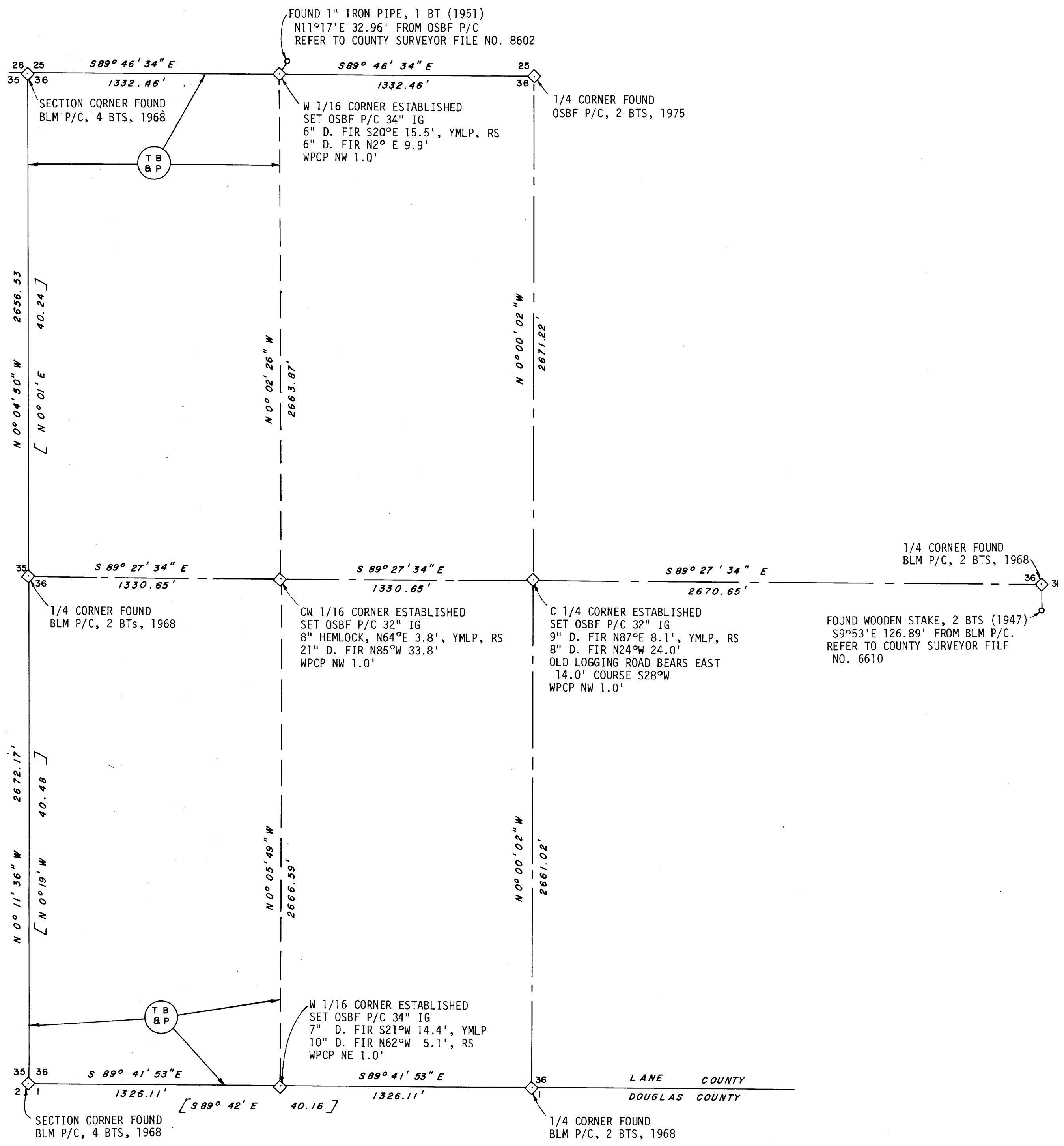


MAP FILE 1262-12

FILED  
RECEIVED  
OCT 19 1977  
COUNTY SURVEYOR  
DOUGLAS COUNTY, ORE.



LEGEND  
OSBF P/C = OREGON STATE BOARD OF FORESTRY 1 1/2"X36" GALVANIZED IRON PIPE WITH 3" BRONZE CAP  
BLM P/C = BUREAU OF LAND MANAGEMENT PIPE AND CAP  
WPCP = 4"X4"X72" WHITE PAINTED CEDAR POST  
YMLP = YELLOW METAL LOCATION POSTER  
IG = IN GROUND  
[ ] = RECORD BEARINGS AND DISTANCES  
TB & P = TRUE BLAZED AND POSTED  
BT(S) = BEARING TREE (OR TREES)  
RS = RS 563

SOLAR OBSERVATION  
MAGNETIC VARIATION 20° EAST  
DATE MARCH 4, 1975  
STANDARD TIME 2:03:38 P.M.  
LOCAL TIME 1:50:38 P.M.  
REF. & PAR. CORRECTION - 1.22'  
TRUE ALTITUDE 35°07'24"  
LATITUDE 43°47'16"  
SUN'S DECLINATION 56°24'31"  
PLACE OF OBSERVATION N0°04'46"W 952.47'  
FROM 1/4 CORNER SECTIONS 35&36, T.20S., R5W., W.M.

SURVEY DATUM  
CONTROL BASED ON POSITION OF BUREAU OF LAND MANAGEMENT PIPES & CAPS AS OF APRIL 14, 1975.  
FOR DETAILED REPORT ON FOUND CORNERS SEE U.S. AND COUNTY RECORDS. ALL NEW CORNERS AND ACCESSORIES MARKED ACCORDING TO "MANUAL OF INSTRUCTIONS FOR THE SURVEY OF THE PUBLIC LANDS OF THE U.S."  
DISTANCES MEASURED TO BT FACE

REGISTERED  
PROFESSIONAL  
LAND SURVEYOR  
*Wiljo E. Green*  
OREGON  
JANUARY 12, 1962  
WILJO E. GREEN  
563

SURVEY FOR:  
STATE OF OREGON-DEPARTMENT OF FORESTRY  
**SECTION 36, T.20S., R.5 W., &  
SECTION 1, T.21 S., R.5 W., W.M.**

LANE COUNTY AND DOUGLAS COUNTY, OREGON  
TRANSIT, CHAIN AND ELECTRONIC DISTANCE METER SURVEY BY:  
T.W. RAY, D.J. PARKER AND J.B. MC NEIL  
DRAWN BY: T. W. Ray  
SEPTEMBER 1977  
SCALE: 1"= 400'

REVISION OF OSBF SURVEY OF JUNE 1975

DO NOT REMOVE FROM OFFICE

B-120-B  
9-21-77  
M. STEVENS

MAP FILE 1262-12