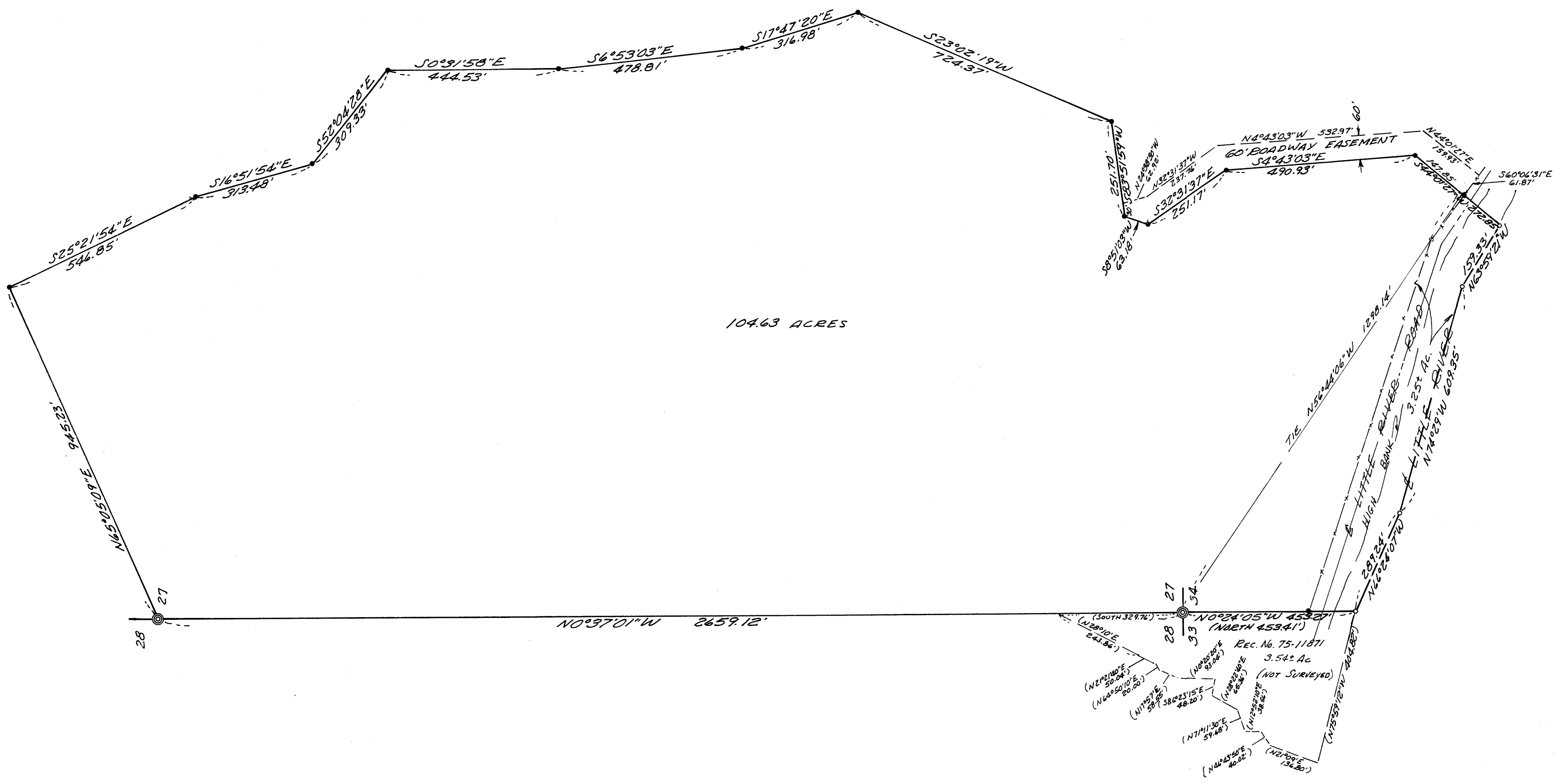


FILED *CC*
 RECEIVED *CC*
 SEP 26 1977
 COUNTY SURVEYOR
 DOUGLAS COUNTY, ORE.
CC

BASED ON SOLAR OBSERVATION



104.63 ACRES

- — Point not set
- — Set 1/2" iron rod
- ⊙ — Found Brass cap

COUNTY SURVEYORS FILE DATA
 DO NOT REMOVE FROM OFFICE

REGISTERED
 PROFESSIONAL
 LAND SURVEYOR
Glenn S. Baughman
 OREGON
 JULY 14, 1961
 GLENN S. BAUGHMAN
 536

SURVEY FOR DESCRIPTION-SEC'S. 27 & 34 T.26S.R.3W.M.11		
FOR: GEORGE KELLER	SCALE 1"=200'	DRAWN BY Ecb
C & G ENGINEERING INC., - ROSEBURG, OREGON		REVISED
DATE 9/14/77	APPROVED BY	DRAWING NUMBER 6150.0058

MAP FILE M12-1

MAP FILE M12-67