

COUNTY SURVEYORS FILE DATA
NOT REMOVE FROM OFFICE

SURVEY IN SEC. 21, T28S, R6W. W.M.

WINSTON, ORE.

SURVEYED FOR - BILL BEAIRD
SURVEYED BY - W. S. BARNES

SEPT. 1977

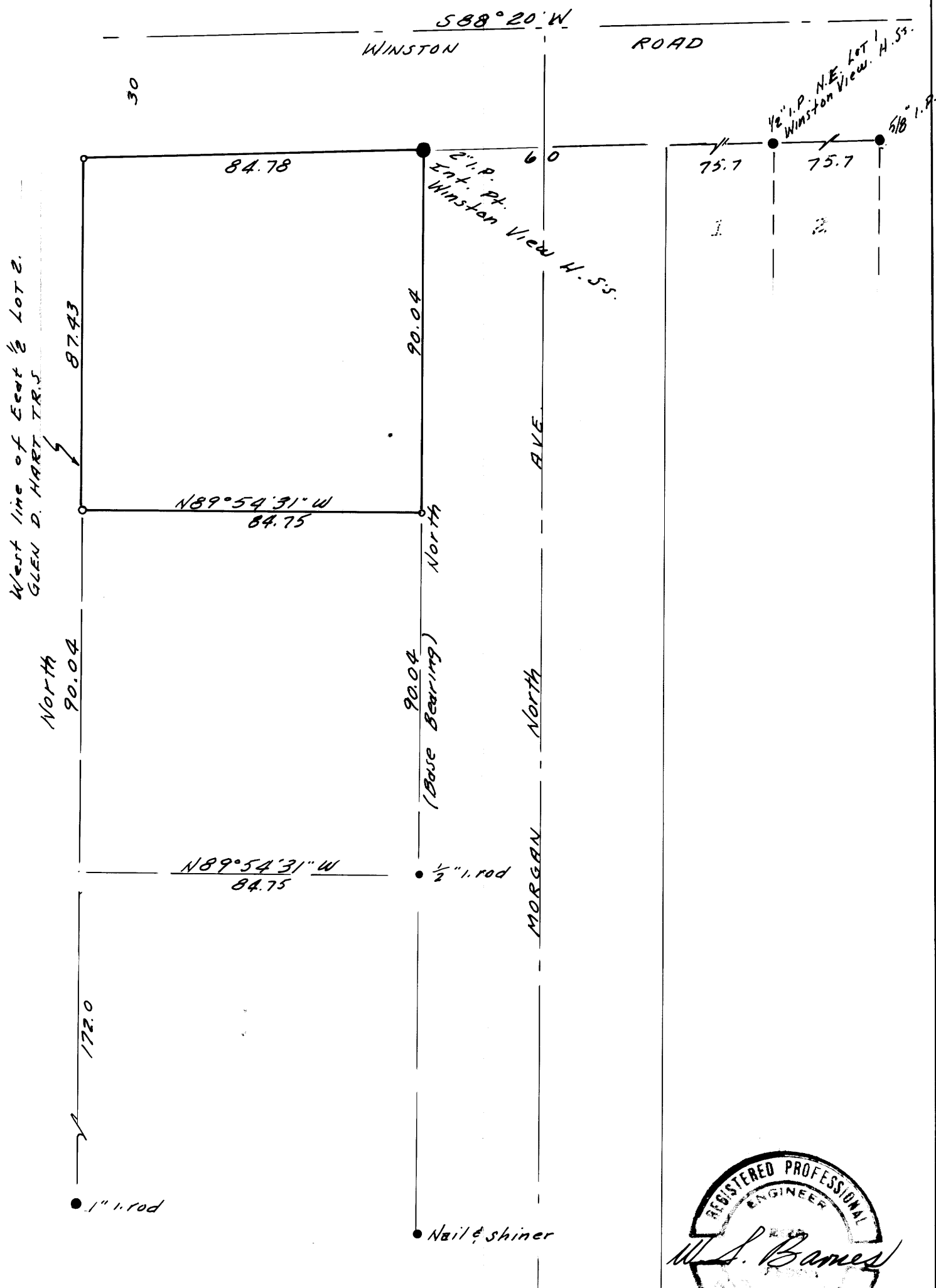
FILED *W*
RECEIVED *w*

SEP 23 1977

COUNTY SURVEYOR
DOUGLAS COUNTY, ORE.



SCALE 1"=30'



- 1/2" rods set.
- Monuments found.

