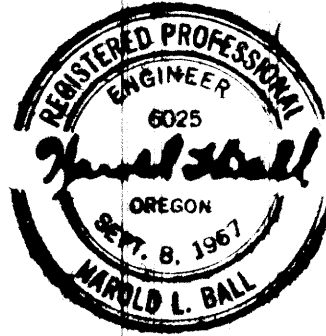


SURVEY IN SECTION 28, T28S, R4W, W.M.
 FOR - MOE, RAINBOW, & LEE
 BY - HAROLD L. BALL, CIVIL ENGINEER
 SEPT. , 1977
 SCALE 1" = 100'

COUNTY SURVEYORS FILE DATA
 DO NOT REMOVE FROM OFFICE



FILED ✓
 RECEIVED ✓

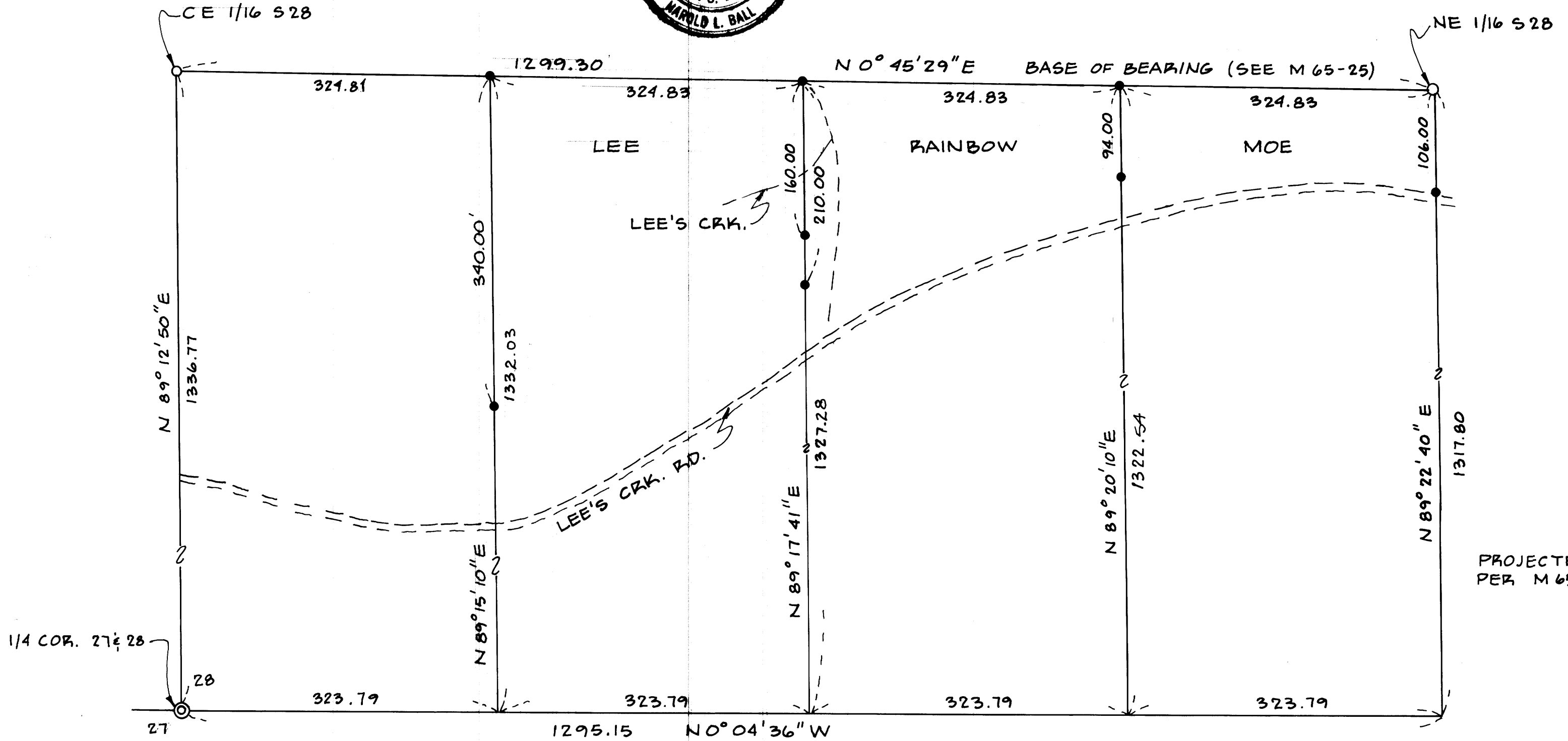
SEP 21 1977

COUNTY SURVEYOR
 DOUGLAS COUNTY, ORE.



○ FD. COR. AS SHOWN
 ● SET 5/8" I.R.

MAP FILE M66-75



MAP FILE M66-75