

COUNTY SURVEYORS FILE DATA
DO NOT REMOVE FROM OFFICE

SURVEY FOR DEED DESCRIPTION

IN SEC. 3, T28S, R5W, W1M.

SURVEYED FOR - PATTERSON'S MASONIC PARK, INC.
SURVEYED BY - W.S. BARNES

SEPT. 1977
SCALE 1" = 100'

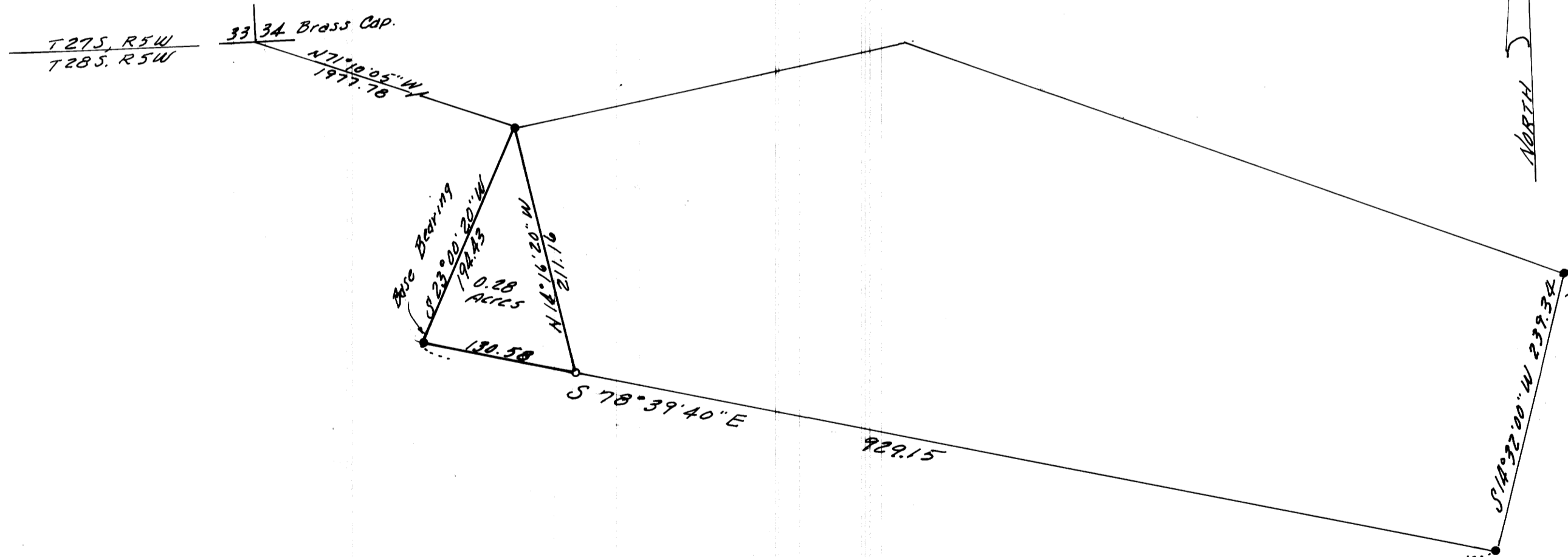
FILED ✓
RECEIVED KC

SEP 15 1977

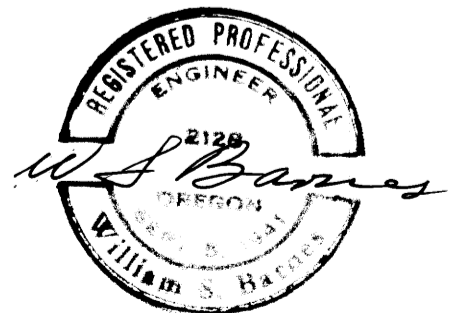
COUNTY SURVEYOR
DOUGLAS COUNTY, OREGON

✓

MAP FILE 2266-70



• Denotes 5/8" iron rods found
○ " 5/8" " " set.
Reference - C.S. 55-39



MAP FILE 2266-70