

FILED
RECEIVED
SEP 18 1977
COUNTY SURVEYOR
DOUGLAS COUNTY, ORE.

C.S. 58/152
MAP FILE 12146 - 64

○ Indicates Monuments Found OR Restored.

● Indicates Set Monuments and Steel Posts With White Boundary Paddle.

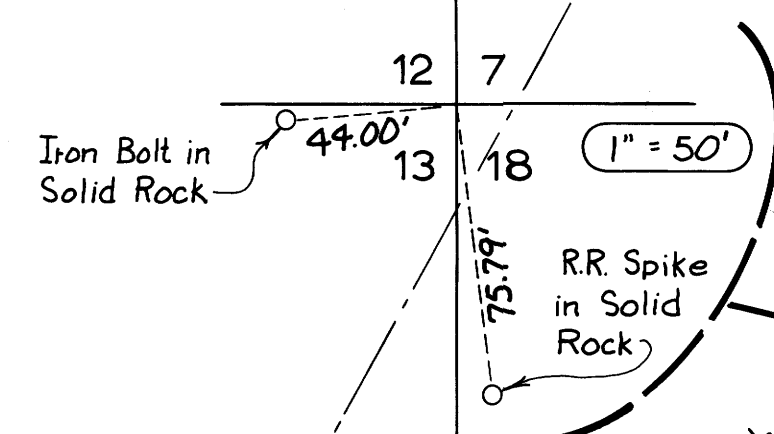
Aluminum Caps on Set Iron Rods Marked "OREGON STATE PARKS". Boundary Paddles Marked "OREGON STATE PARK BOUNDARY DO NOT DISTURB".

Grid Bearing Obtained Between Station 75+00 & 85+00 Which Are Brass Disk Monuments on The South Jetty Survey Line as Established by The U.S. Army Corps of Engineers. That Grid Bearing Being N 65° 32' 37" W. Station 75+00 is 1,399.28' South & 7,047.16' West of The Section Corner Common to Sections 7, 12, 13 & 18.

Magnetic Var. - 20 1/2°.

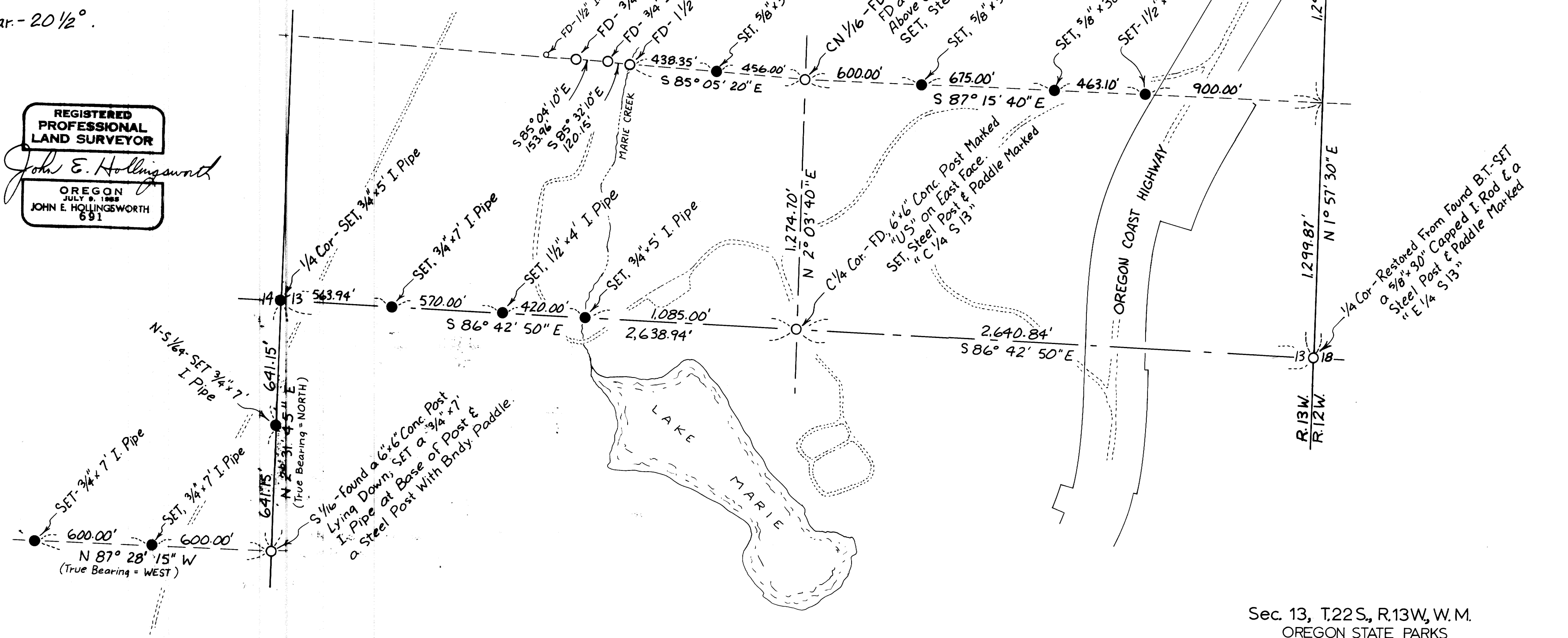
TRUE = N 2° 31' 45" W
GRID = North

Tie to Sec Cor. From Ore. State Hwy. Division Right-of-Way Map.



REGISTERED PROFESSIONAL LAND SURVEYOR
John E. Hollingsworth
OREGON
JULY 9, 1985
JOHN E. HOLLINGSWORTH
691

PACIFIC OCEAN



Reference Surveys: H.L. Eppstein, Co. Surveyor, Oct. 1931 (Map File - M1-74)
Richard J. Hintz, Oct. 1963 (CS File No 51/252 P)
Also: Douglas Co. Surveyors Record of Government Corners Renewed.
Oregon State Highway Division Right-of-Way Map.

Sec. 13, T.22S., R.13W., W.M.
OREGON STATE PARKS
SURVEY
UMPUQUA LIGHTHOUSE STATE PARK
DOUGLAS COUNTY
SCALE: 1" = 400'
AUGUST 26, 1977

COUNTY SURVEYORS FILE DATA
DO NOT REMOVE FROM OFFICE

C.S. 58/152
MAP FILE 12146 - 64

M 66-64

UMPQUA LIGHTHOUSE STATE PARK
Section 13, T.22S., R. 13W., W.M.

FILED ✓
RECEIVED ✓

SEP 12 1977

Douglas County
August 26, 1977

COUNTY SURVEYOR
DOUGLAS COUNTY, ORE.

SURVEY NARRATIVE

This survey was made by using a Hewlett Packard 3805 EDM and a 30 second Kern theodolite. A Dietzgen 1 minute transit and a 300-foot steel tape were used on parts of the survey requiring a lesser degree of accuracy.

Section 13 had been subdivided in 1931 by H. L. Eppstein and we were able to find several of his monuments. We could not, however, agree closely with the bearings and distances on all courses between monuments. We could not find any pattern to the discrepancies.

At the Center Quarter, the Center North 1/16th and the South 1/16th between Sections 13 and 14, we found 6"x6" concrete posts with "US" stamped at the top. In talking with Bob Stanford, of the U.S. Coast Guard in Seattle, we found that these concrete posts were actually intended to be the corner monuments. Also, Richard J. Hintz used the concrete post at the Center North 1/16th in his 1960 survey.

We could not locate the NW 1/16 in Section 13, which was found in 1963 by Richard J. Hintz to be a 2-inch iron pipe set in concrete. We did find two other points set by him easterly of the NW 1/16th which we used for control. A 1-1/2 inch iron pipe was found in the center of Marie Creek along this same line, which fit so closely that we used it as a deed point on our survey.

The Quarter Corner between Sections 13 and 14 was reestablished by producing the East-West centerline of Section 13 from the East Quarter through the Center Quarter and intercepting this line with a line due North out of the found South 1/16th between Sections 13 and 14.

CORNER INFORMATION

Var. 20° 30"

SOUTH SIXTEENTH 13 and 14

FOUND:

6"x6"x6' concrete post lying down, marked "U.S."

RESTORATION:

Set 3/4"x7' iron pipe at base of concrete post.
Set steel post with white paddle marked "OREGON STATE PARK
BOUNDARY DO NOT DISTURB", 2 feet SE of iron pipe.
6" Shore Pine N22°15'W, 73.5 feet blazed and marked "X".
6" Shore Pine S11°E, 160.9 feet blazed and marked "X",
tagged with a Parks corner tag.

Witnessed by:

R. Mills
E. Woods
T. DeSouza

NORTH-SOUTH SIXTY-FOURTH, Section 13 and 14

ESTABLISHED:

Set 3/4" x 7' iron pipe, 0.2 feet above ground.
Set steel post with white paddle marked "OREGON STATE PARK
BOUNDARY DO NOT DISTURB".
Iron boat spike N76°15'W, 144.58 feet set in pavement in
centerline of beach access road.

Witnessed by:

John Hollingsworth
R. Mills
E. Woods
T. DeSouza

QUARTER CORNER 13 and 14

RE-ESTABLISHED:

#18
Set 3/4" x 5' iron pipe.
Set steel post with white paddle marked "OREGON STATE PARK
BOUNDARY DO NOT DISTURB", 2' East of iron pipe.
A nail with rounded head and a 2" dia. shinner in pavement
of road, N71°30'E, 178.17 feet.
A Coast Guard telegraph pole, S3°30'E, 189.57 feet to a
PK nail on west side of pole, 4 feet above ground.

Witnessed by:

R. Mills
E. Woods
T. DeSouza

CENTER QUARTER CORNER SECTION 13

FOUND:

#19
6"x6" concrete post marked "U.S." on the east side.
52", 8 feet high Spruce stump S5°E, 31.3 feet,
Scribed "BT" on North side.

RESTORATION:

Set steel post with white paddle marked "C 1/4 S 13".
16" fir S25°W, 21.75 feet to a Date nail on East side,
4 feet above ground.
6" Hemlock N28°30'W, 9.07 feet to a Date nail on East
side, 2 feet above ground.
A iron railroad spike, S89°30'E, 29.0 feet, in pavement,
8 feet from West edge of road.

Witnessed by:

R. Mills
L. Boge
T. DeSouza

CENTER-NORTH SIXTEENTH SECTION 13

FOUND:

6"x6" concrete post, 3 feet above ground marked "U.S."
on the east side.

43" Spruce, West 2 feet to face of tree, with an old blaze and the letter C visible.
A 1-1/2" iron pipe inside a 2-1/2" iron pipe, S5°E 3.8 feet, bent over slightly.

RESTORATION:

Set steel post with white paddle marked "OREGON STATE PARK BOUNDARY DO NOT DISTURB" 2 feet South of concrete post.
31" Spruce N9°E, 20.2 feet, scribed "CN 1/16 S13 BT".
30" Spruce S54°E, 16.0 ft., scribed "CN 1/16 S13 BT RS 691, tagged with a Parks corner tag.

Witnessed by:

L. Boge
T. DeSouza

QUARTER CORNER 13 and 18

FOUND:

40" Spruce stump 6' high with a previously chopped out blaze (Original BT)
34" Spruce stump 4 feet high S1°30'E, 54.0 feet with blaze on north side (Line Tree)

RESTORATION:

Set 5/8"x30" iron rod with a 1-1/2" aluminum cap marked "OREGON STATE PARKS", S50°W, 22.0 feet from Found Bearing Tree.
Set steel post with white paddle marked "E1/4S13".
14" Spruce S75°45'W, 8.1 feet scribed "1/4S13 T22SR13WBT", tagged with a Parks corner tag.
18" Spruce N22°30'E, 17.1 feet scribed "1/4 S18 T22S R12W BT RS 691".

Witnessed by:

R. Mills
L. Boge
T. DeSouza

SECTION CORNER 7, 12, 13, 18

FOUND:

Reference points for Section Corner as indicated on Oregon State Highway Division Right-of-Way Map. Section Corner is in highway.
An iron bolt in solid rock on West side of highway, 1 foot above shoulder grade, 44.00 feet to Section corner.
An iron railroad spike on East side of highway, 2 feet above shoulder grade, 75.79 feet to Section corner.

Witnessed by:

R. Mills
E. Woods
T. DeSouza

REGISTERED
PROFESSIONAL
LAND SURVEYOR

John E. Hollingsworth

OREGON
JULY 9, 1965
JOHN E. HOLLINGSWORTH
691

#20
T22-13
#136 T22-12