

COUNTY SURVEYORS FILE DATA  
DO NOT REMOVE FROM OFFICE

FILED  
RECEIVED

SEP 10 1977

COUNTY SURVEYOR  
DOUGLAS COUNTY, ORE.

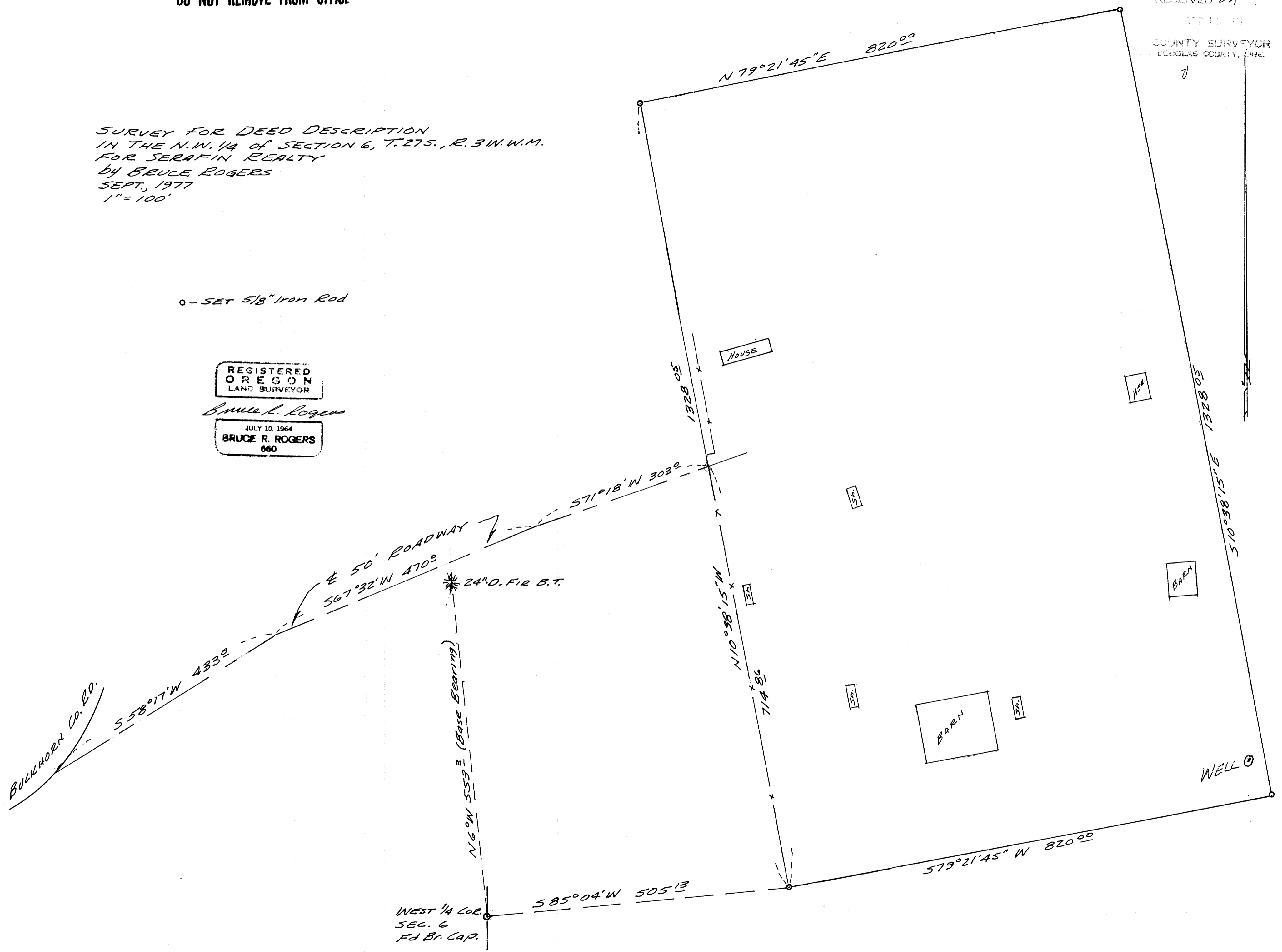
SURVEY FOR DEED DESCRIPTION  
IN THE N.W. 1/4 OF SECTION 6, T.27S., R.3W.W.M.  
FOR SERAFIN REALTY  
BY BRUCE ROGERS  
SEPT., 1977  
1" = 100'

o - SET 5/8" Iron Rod

REGISTERED  
OREGON  
LAND SURVEYOR

Bruce R. Rogers

JULY 10, 1964  
BRUCE R. ROGERS  
660



MAP FILE N. 66-62

MAP FILE N. 66-62