

FILED
RECEIVED

SEP 7 1977

COUNTY SURVEYOR
DOUGLAS COUNTY, OREGON

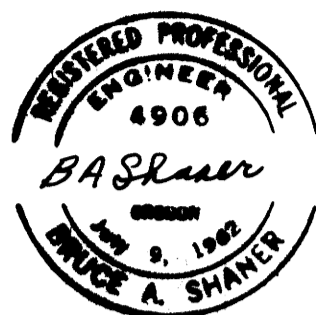
COUNTY SURVEYORS FILE DATA
DO NOT REMOVE FROM OFFICE

PROPERTY LINE SURVEY OF THE SOUTH
LINE OF LOTS 8 & 9, BLOCK 2, PLAT
"O", SUTHERLIN LAND & WATER CO., IN
THE SE 1/4 NE 1/4 SEC. 19, T. 25 S.,
R. 5 W., W. M., CITY OF SUTHERLIN, OREGON

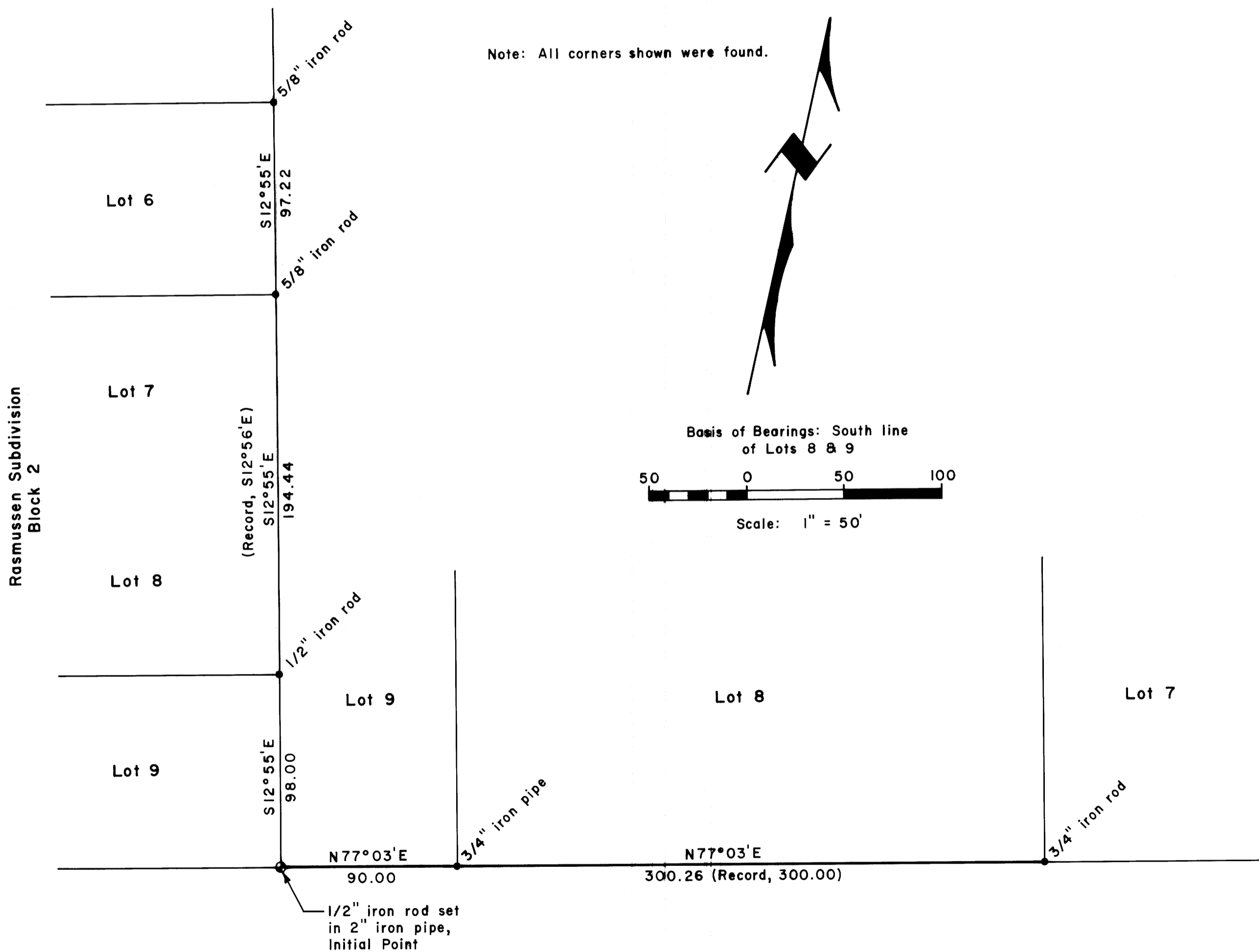
For: Dawn - Rey Mobile Park

By: Shaner Engineering, Inc.

August 30, 1977



Note: All corners shown were found.



Note: Refer to County Surveyor's Map File M1-47 & Rasmussen Subdivision Plat