

SURVEY IN SEC. 25, T26 S, R6 W, W.M.

SURVEY FOR CASEY MORGAN

SURVEY BY BHW ENGR. & SURVEYING, INC.

COUNTY SURVEYORS FILE DATA
DO NOT REMOVE FROM OFFICE

FILED
RECEIVED

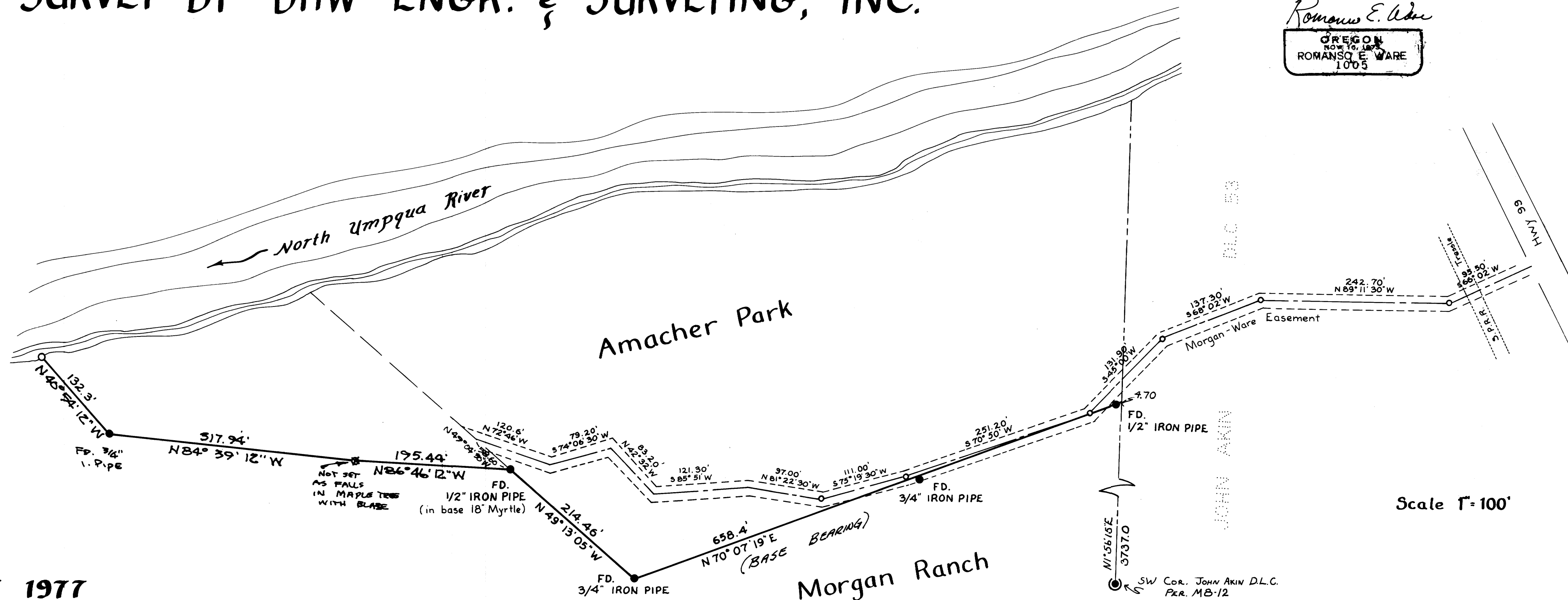
AUG 22 1977

COUNTY SURVEYOR
DOUGLAS COUNTY, ORE.

REGISTERED
PROFESSIONAL
LAND SURVEYOR

Romano E. Ware

OREGON
NOW TO, 1975
ROMANSO E. WARE
1005



AUGUST 1977