

FILED <sup>FE</sup>  
RECEIVED <sup>FE</sup>

AUG 22 1977

COUNTY SURVEYOR  
DOUGLAS COUNTY, ORE.  
<sup>FE</sup>

● = FOUND "T" IRON  
○ = SET 1/8" IRON ROD

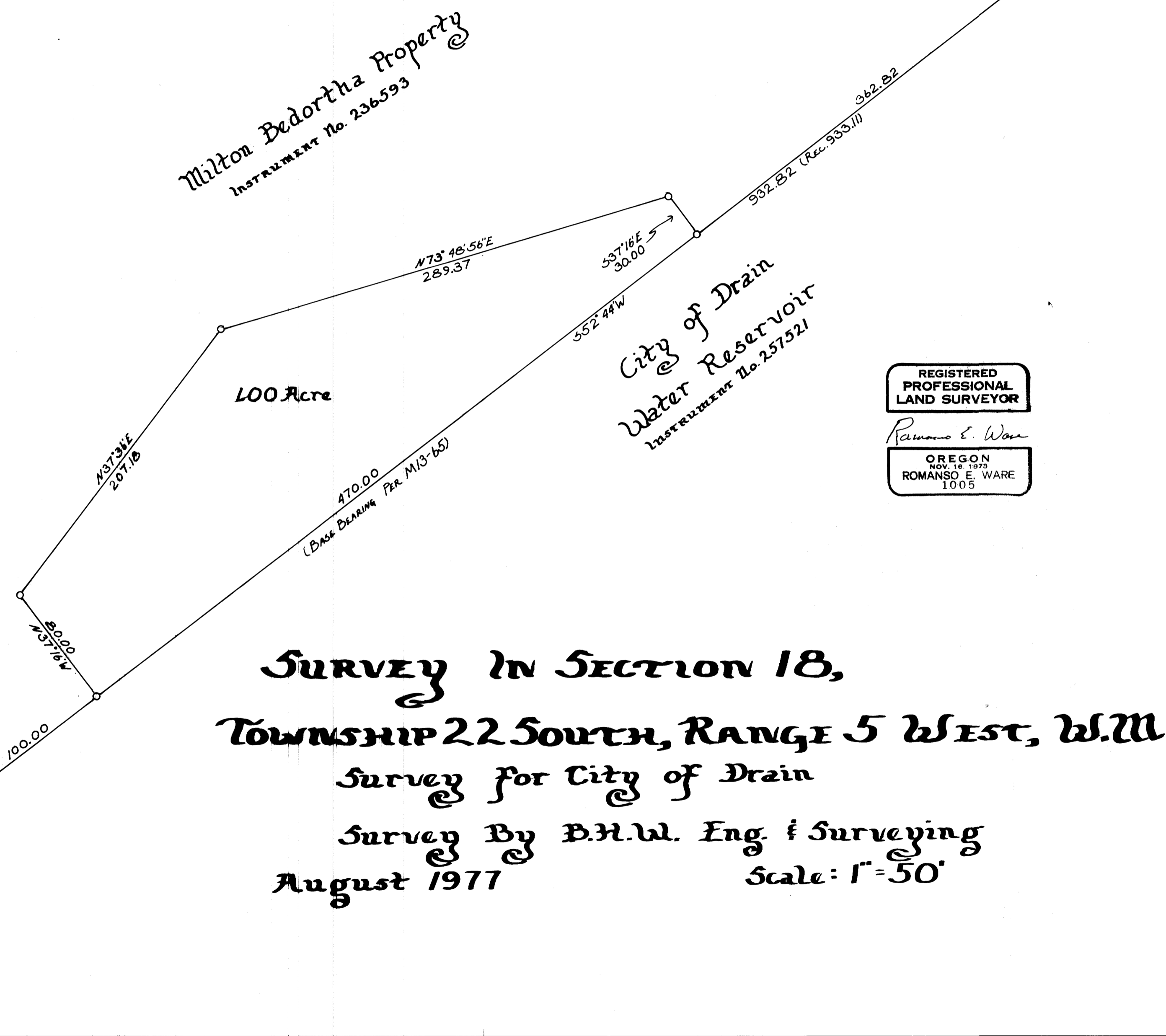


Milton Bedortha Property  
INSTRUMENT No. 236593

100 Acre

City of Drain  
Water Reservoir  
INSTRUMENT No. 257521

REGISTERED  
PROFESSIONAL  
LAND SURVEYOR  
*Romanso E. Ware*  
OREGON  
NOV. 18 1879  
ROMANSO E. WARE  
1005



# SURVEY IN SECTION 18, TOWNSHIP 22 SOUTH, RANGE 5 WEST, W.M.

## Survey for City of Drain

Survey By B.H.W. Eng. & Surveying  
August 1977  
Scale: 1" = 50'

Tie Per Survey M13-65

13	18	West
24	19	1567.42

MAP FILE M.66-44

MAP FILE M.66-44

COUNTY SURVEYORS FILE DATA  
DO NOT REMOVE FROM OFFICE