

COUNTY SURVEYORS FILE DATA
DO NOT REMOVE FROM OFFICE

SURVEY FOR DEED DESCRIPTIONS

IN SEC. 12, T24S, R5W, W.M.

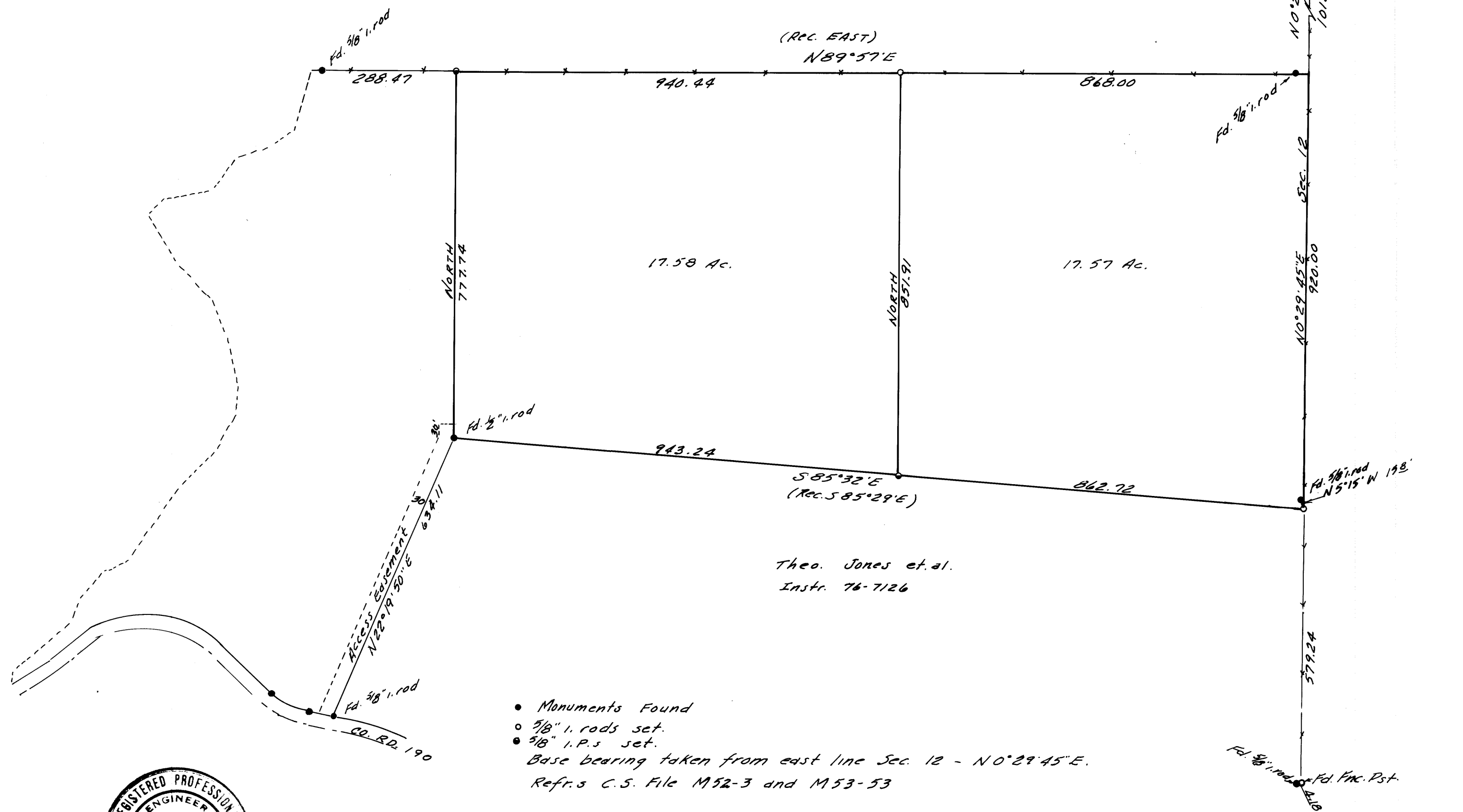
SURVEYED FOR - WM J. BARTON
SURVEYED BY - W. S. BARNES

AUG. 1977

FILED ✓
RECEIVED MLL
AUG 17 1977
COUNTY SURVEYOR
DOUGLAS COUNTY, ORE.
✓

Robt. Compton et. al.
Instr. 74-3285

SCALE 1" = 200'



Theo. Jones et. al.
Instr. 76-7126

- Monuments Found
 - 1/8" i. rods set.
 - 3/8" i. P.s set.
- Base bearing taken from east line Sec. 12 - N0°29'45"E.
Refs C.S. File M52-3 and M53-53



M66-36

M66-36