

COUNTY SURVEYORS FILE DATA  
DO NOT REMOVE FROM OFFICE

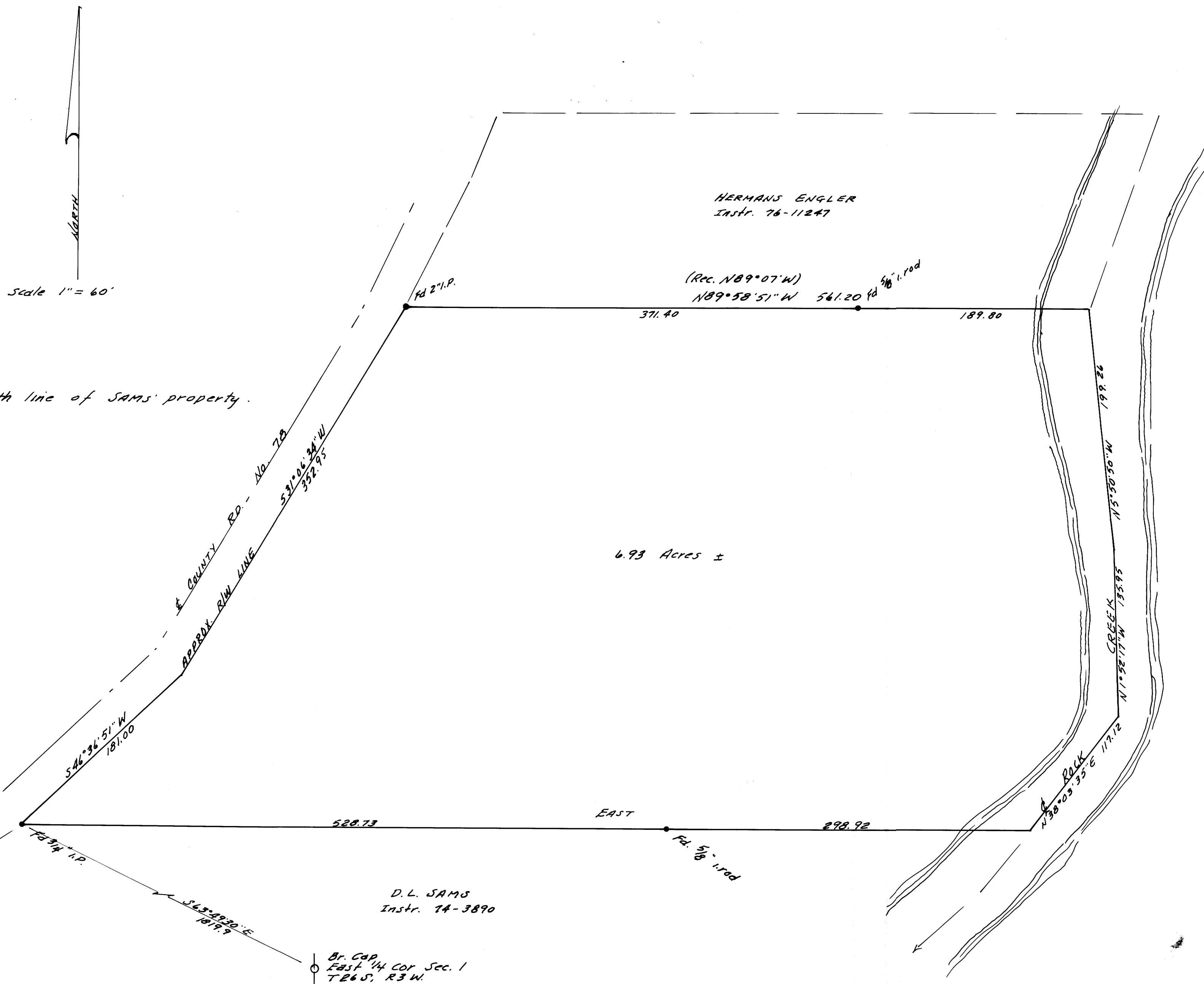
# SURVEY FOR DEED DESCRIPTION

IN SEC. 1, T 26 S, R 3 W. N.M. DOUGLAS CO., ORE.

SURVEYED FOR - KEN OVERTON  
SURVEYED BY - W.S. BARNES

AUG. 1977

FILED ✓  
RECEIVED MLL  
AUG 17 1977  
COUNTY SURVEYOR  
DOUGLAS COUNTY, ORE.  
✓



MAP FILE M66-35

MAP FILE M66-35