

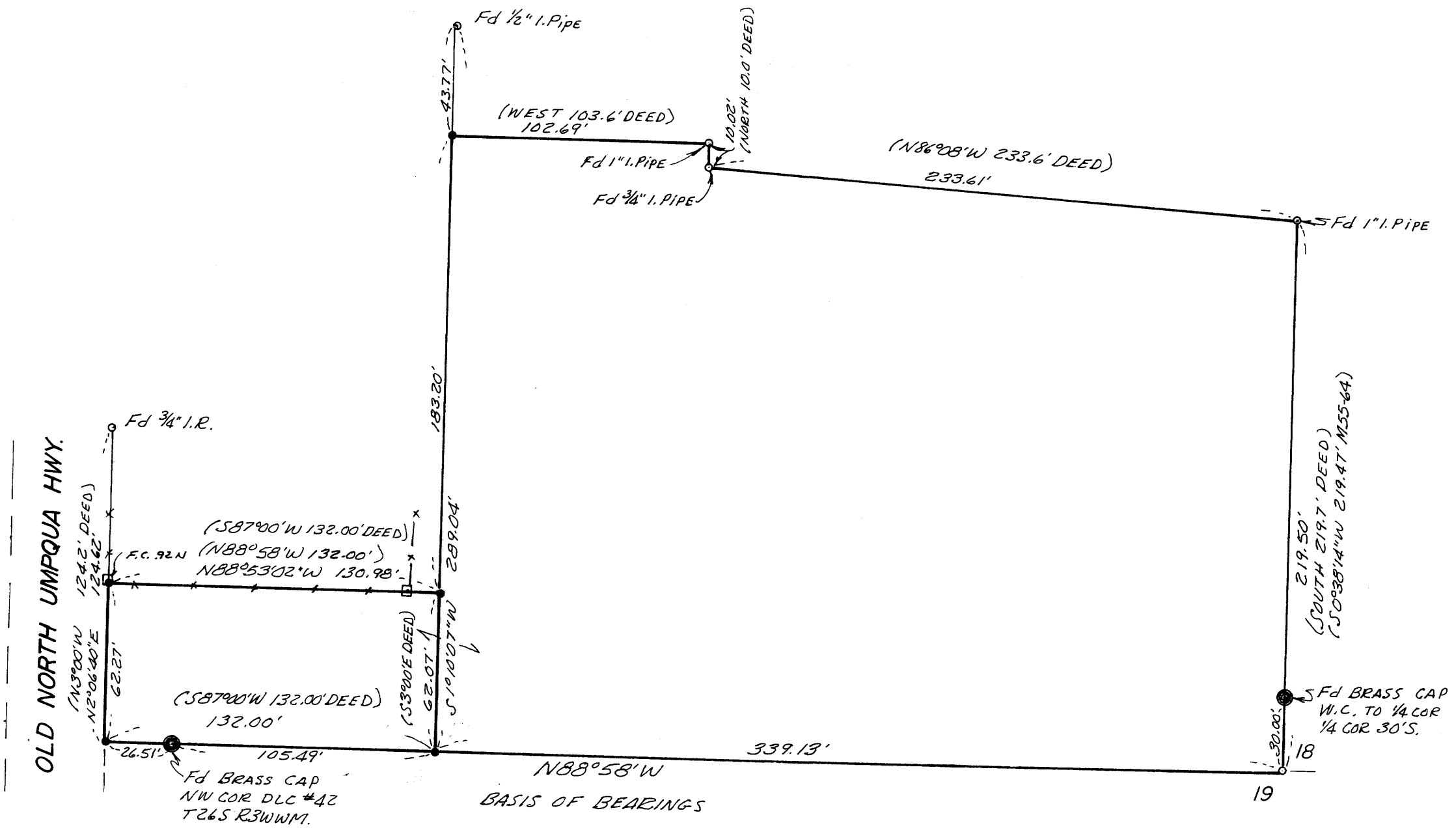
# SURVEY FOR PROPERTY CORNERS

IN SECTION 18, T.26S. R.3W.W.M. COUNTY SURVEYORS FILE DATA  
 FOR: AGNES MOORE DO NOT REMOVE FROM OFFICE  
 BY: C & G ENGINEERING INC.

JULY 1977 SCALE: 1"=50'

FILED  
 RECEIVED  
 AUG 15 1977  
 COUNTY SURVEYOR  
 DOUGLAS COUNTY, ORE.

BASED ON CS 36/31



- — Set 1/2" iron rod
- — Point found - as noted
- — Fence corner

REGISTERED  
 PROFESSIONAL  
 LAND SURVEYOR

*Glenn S. Baughman*

OREGON  
 JULY 14, 1961  
 GLENN S. BAUGHMAN  
 536

MAP FILE M66-34

FILE M66-34