

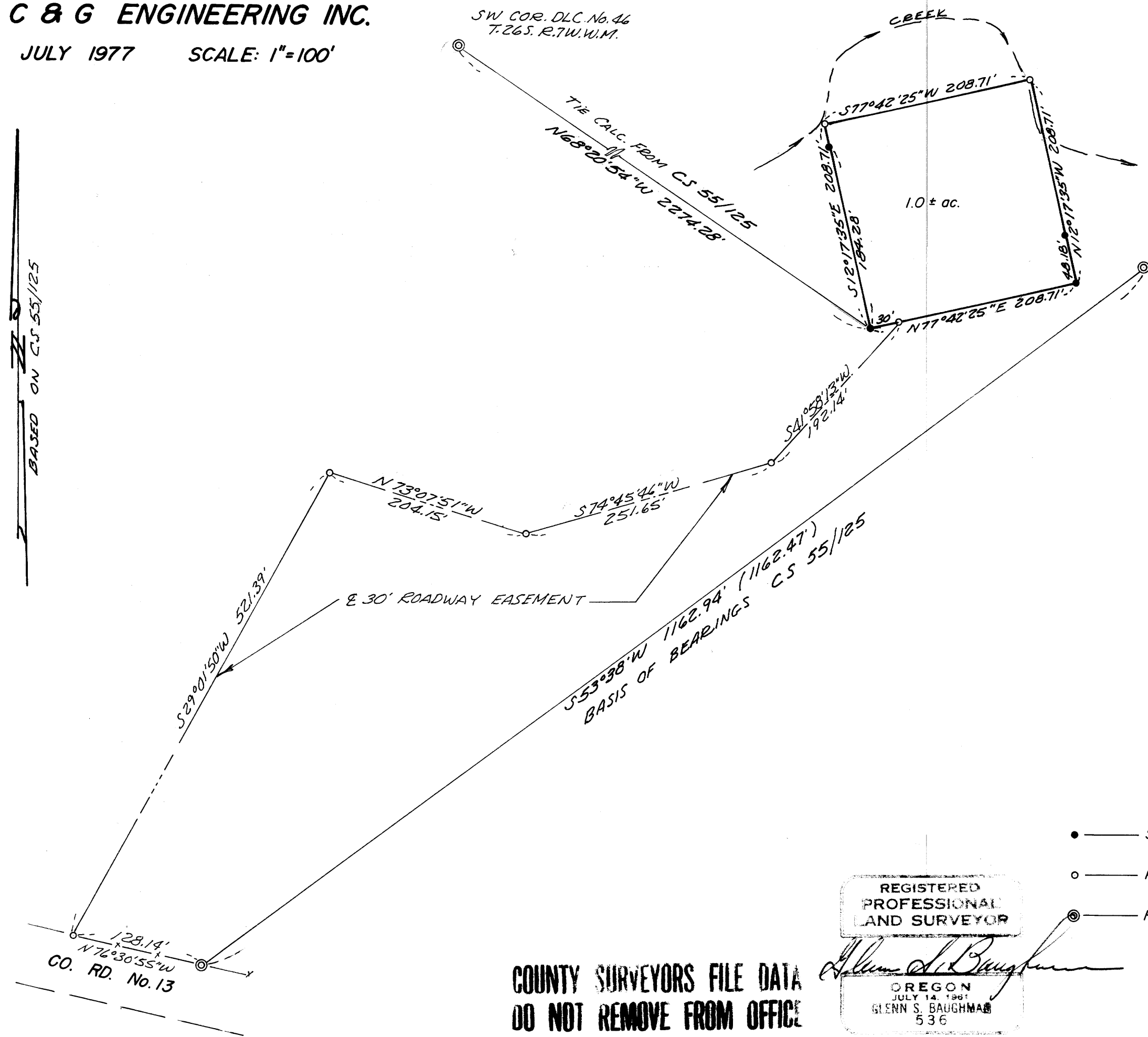
SURVEY FOR DESCRIPTION FOR MORTGAGE PURPOSES IN SECTION 24, T.26S. R.7W.W.M.

FOR: KEITH SPARLIN
BY: C & G ENGINEERING INC.

JULY 1977 SCALE: 1"=100'

FILED ✓
RECEIVED ✓
AUG 15 1977
COUNTY SURVEYOR
DOUGLAS COUNTY, ORE

MAP FILE 1266-33



LEGEND

- — Set 1/2" iron rod
- — Point not set
- ⊙ — Found 5/8" iron rod

REGISTERED
PROFESSIONAL
LAND SURVEYOR

Glenn S. Baughman

OREGON
JULY 14, 1961
GLENN S. BAUGHMAN
536

COUNTY SURVEYORS FILE DATA
DO NOT REMOVE FROM OFFICE

MAP FILE 1266-33