

COUNTY SURVEYORS FILE DATA
DO NOT REMOVE FROM OFFICE

SECTS 31+32, T.22S., R.5 W. W.M.
F.V

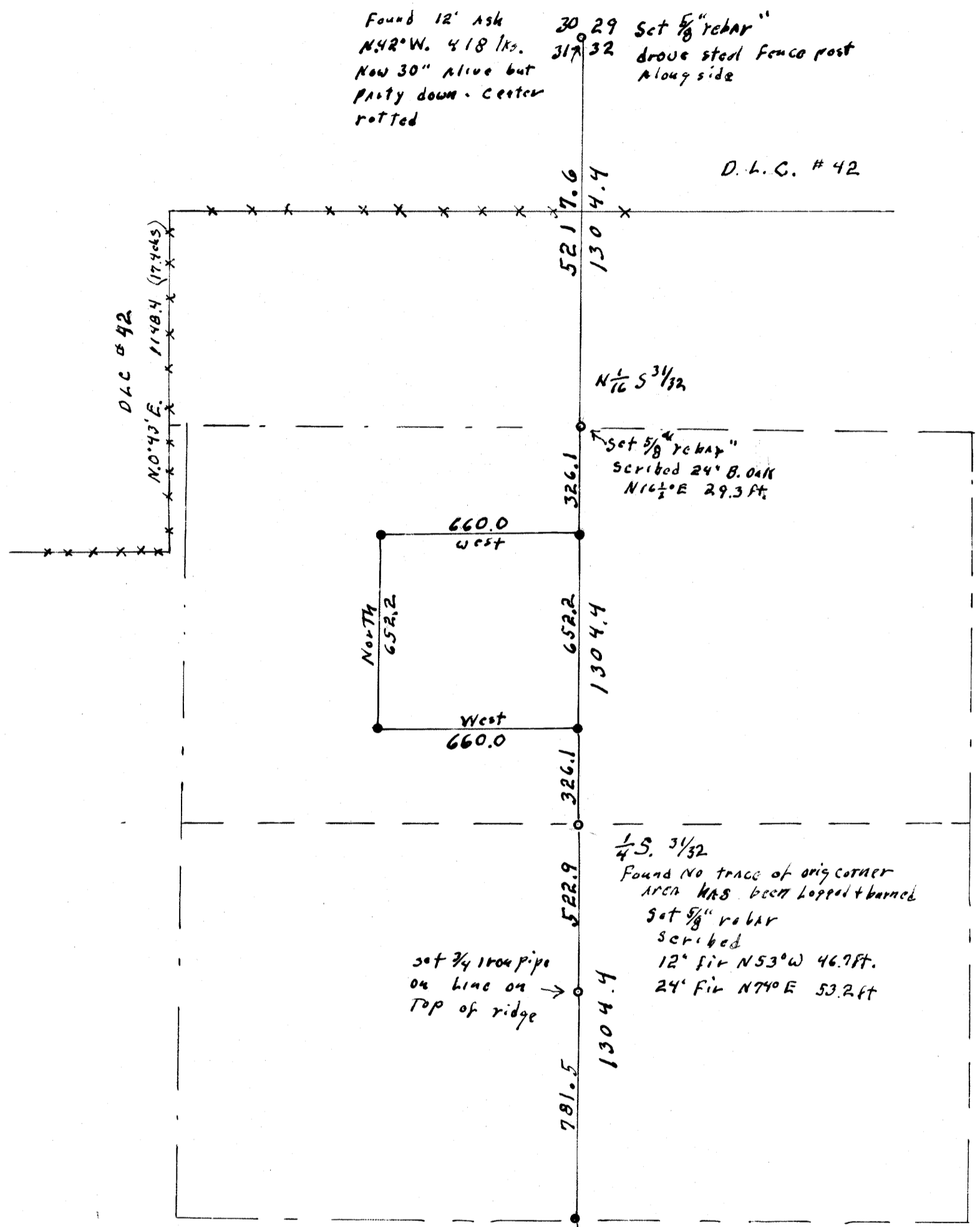
"Rick" McMullin

DRAIN. 0109

FILED ✓
RECEIVED ✓

AUG 12 1977

COUNTY SURVEYOR
DOUGLAS COUNTY, ORE.



Set 5/8" rebars No B.T.s.
Scale 1" = 500 ft Aug. 1977

North
Based on North
for line sit 32.

REGISTERED
OREGON
LAND SURVEYOR
WILFORD N. HAINES
MAY 7, 1948
239

31 32
6
T.23S. R.5W. W.M.