

Survey for Deed Description in  
Sec 31, T 25 S, R 7 W, W.M.

Scale 1" = 100'

Survey for R. Gunderson

July 1977

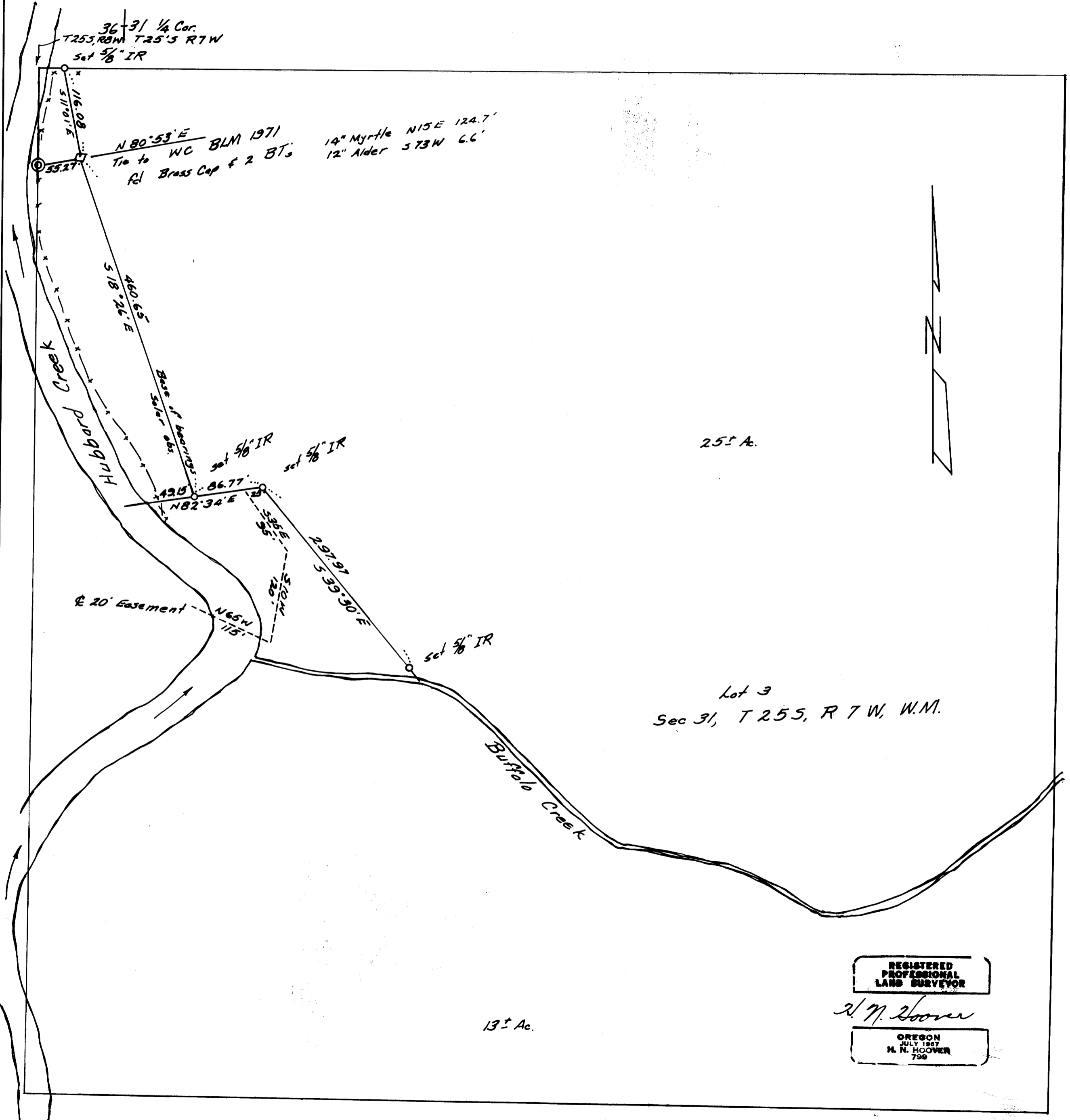
COUNTY SURVEYORS FILE DATA  
DO NOT REMOVE FROM OFFICE

FILED ✓  
RECEIVED MLL

AUG 1 1977

COUNTY SURVEYOR  
DOUGLAS COUNTY, ORE.

✓



REGISTERED  
PROFESSIONAL  
LAND SURVEYOR

H. N. Hoover

OREGON  
JULY 1967  
H. N. HOOVER  
799