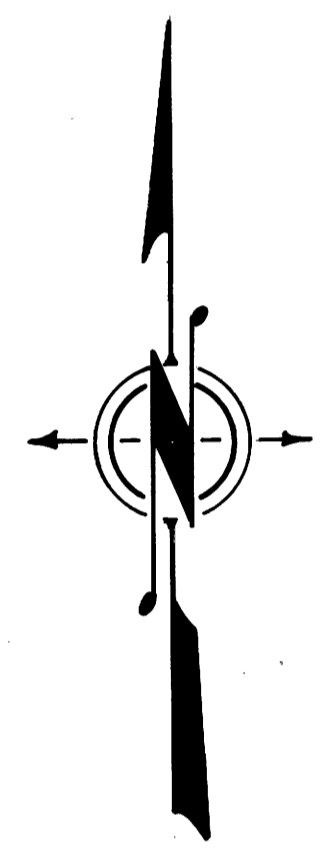
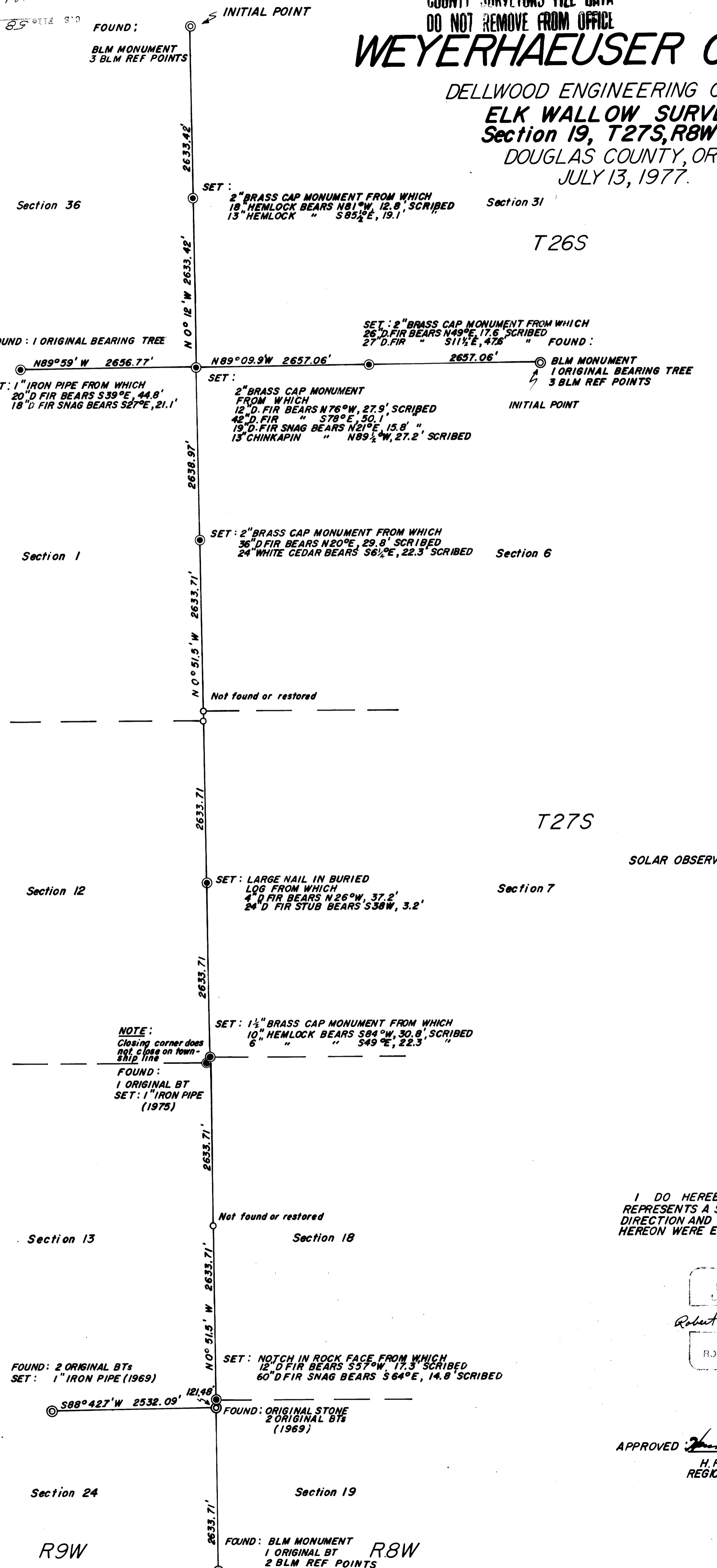


COUNTY SURVEYORS FILE DATA  
DO NOT REMOVE FROM OFFICE  
**WEYERHAEUSER COMPANY**

DELLWOOD ENGINEERING OFFICE  
ELK WALLOW SURVEY  
Section 19, T27S, R8W WM  
DOUGLAS COUNTY, ORE.  
JULY 13, 1977.

FILED  
RECEIVED  
JUL 26 1977  
COUNTY SURVEYOR  
DOUGLAS COUNTY, ORE.

Map File M66-12  
C.S. File 58-139



SCALE: 1" = 1000'  
SOLAR OBSERVATION IS BASIS OF BEARINGS

I DO HEREBY CERTIFY THAT THIS PLAT REPRESENTS A SURVEY CONDUCTED UNDER MY DIRECTION AND THAT THE MONUMENTS INDICATED HEREON WERE EITHER FOUND OR SET AS INDICATED

RECEIVED  
PROFESSIONAL  
LAND SURVEYOR

Robert C. Adamick

CREATION  
ROBERT C. ADAMEK  
091

APPROVED *H.R. Reppeto*  
H. R. REPPETO  
REGION ENGINEER

R9W  
FOUND: BLM MONUMENT  
1 ORIGINAL BT  
2 BLM REF POINTS  
R8W

C.S. File 58-139  
Map File M66-12

M 66-12

Weyerhaeuser Company  
Elk Wallow Survey Narrative  
Section 19, T27S, R8W, W.M.  
Douglas County, Oregon

FILED  
RECEIVED 2/6

JUL 26 1977

COUNTY SURVEYOR  
DOUGLAS COUNTY, ORE.

General Information

In order to establish the location of company property in Section 19, T27S, R8W, W.M., a survey was conducted using a Wild T-16 ED Theodolite, K and E "invincible" 300 foot chain, Jena 020A Theodolite, and a Mac I Electronic Distance Meter. Because of the nature of the survey a loop closure was not economically feasible, so in order to assure accuracy the entire traverse was run twice (all horizontal angles measured four (4) times - vertical angles and slope distances twice). To further guard against mistakes an independent set of notes were kept and staff compass bearings of each course were also recorded. The north-south traverse was initiated at the NW corner of Section 31, T26S, R8W, and the east-west traverse at the SE corner of said section. The terrain is brushy, extremely precipitious and generally difficult to survey. All bearings on the accompanying plat are based on a solar observation.

Corner Research

Research for this survey required extensive staff compass traversing to uncover the corners necessary to complete the restoration ( see appendix I). It is interesting to note that none of topographic calls from the notes of the original surveyor (Heydon) fit the ground for the northern three (3) miles of the west boundary of T27S, R8W., nor was any of his work uncovered. The last mile, west line of Section 6, T27S, R8W, which is extremely rough, is very suspect (see appendix II and III).

The following corners and or their accessories were either found or set as indicated during the survey, Weyerhaeuser Company location posters and "W" nails were used on reference points for established corners.

NW Cor Sec. 31, T26S, R8W

Found a BLM monument set in 1967 from which a:  
29" Douglas Fir bears N65°W, 12 links scribed  
15" Douglas Fir bears S34°E, 30 links scribed  
24" Douglas Fir bears S32°W, Distance omitted scribed

W1/4 Cor Sec. 31

Set by single proportion a 2" brass cap monument from which a:  
18" Hemlock bears N81°W, 12.8 feet scribed 1/4 Cor RP  
13" Hemlock bears S85 1/2°E, 19.1 feet scribed 1/4 Cor RP

#72 ✓

SW Corner Section 31 (Township Corner)

#73 T26-8 ✓  
#43 T27-8 ✓

Set by double proportion a 2" brass cap monument from which a:  
12" Douglas Fir bears N76°W, 27.9 feet scribed TWP Cor RP  
42" Douglas Fir bears S78°E, 50.1 feet scribed TWP Cor RP  
19" Douglas Fir snag bears N21°E, 15.8 feet scribed TWP Cor RP  
13" Chinquapin bears N89 1/2°W, 27.2 feet scribed TWP Cor RP

S 1/4 Corner Section 31

#74 T26-8 ✓  
#44 T27-8 ✓

Set by single proportion a 2" brass cap monument from which a:  
26" Douglas Fir bears N49°E, 17.6 feet scribed 1/4 Cor RP  
27" Douglas Fir bears S11 1/2°E, 47.6 feet scribed 1/4 Cor RP

SE Corner Section 31

Found BLM monument from which a:

60" Douglas Fir bears S49°W, 18 links **original bearing tree**  
12" Hemlock N58°E, 91 links scribed  
6" Hemlock S44°W, 20.5 feet scribed  
6" Hemlock N55°W, 58 links scribed

S 1/4 Corner Section 36, T26S, R9W

Found 28" Douglas Fir original bearing tree with visible scribing.  
Tree bears N11°E, 12 links set a 1" iron pipe from which a:

#21 ✓

20" Douglas Fir bears S39°E, 44.8 feet  
18" Douglas Fir snag bears S27°E, 21.1 feet

W 1/4 Corner Section 6, T27S, R8W

#45 ✓

Set by single proportion a 2" brass cap monument from which a:  
36" Douglas Fir bears N20°E, 29.8 feet scribed 1/4 Cor RP  
24" White Cedar bears S06 1/4°E, 22.3 feet scribed 1/4 Cor RP

W 1/4 Corner Section 7, T27S, R 8W

Set by single proportion a "W" nail in a large buried log for the corner. Also scribed 1/4 S7 in a cedar log lying over the point. Referenced the point as follows:

#46 ✓

4" Douglas Fir bears N26°W, 37.2 feet  
24" Douglas Fir stub bears S38°W, 3.2 feet

The area has recently been logged and scarified.

SW Corner Section 7

Set by single proportion a 1 1/2" brass cap monument from which a:

10" Hemlock bears S84°W, 30.8 feet scribed STD CNR RP  
6" Hemlock bears S49°E, 22.3 feet scribed STD CNR RP

NE Corner Section 13, T27S, R9W (Closing Corner)

Found 1 original bearing tree in 1975 which is a 12" Yew bearing N5°W, 10 links. Tree is down and has visible scribing on underside. Set a 1" iron pipe from which a:

10" Douglas Fir bears N67 1/2°W, 14.5 feet  
10" Hemlock bears S87°E, 17.6 feet

This corner does not close on the township line.

SW Corner Section 18, T27S, R8W

Set by single proportion. Chipped a notch into a rock face for the section corner. Referenced the corner as follows:

12" Douglas Fir bears S57°W, 17.3 feet scribed STD CNR RP  
60" Douglas Fir snag bears S64°E, 14.8 feet scribed STD CNR RP

NE Corner Section 24, T27S, R9W

The original stone and two (2) bearing trees were found by Williams and Lester in 1969:

12" Yew bearing N36°W, 19.8 feet (down)  
Fir snag bearing S64°W, 7.2 feet

Additional references:

16" Hemlock bears N84 1/2°W, 32.0 feet  
14" Hemlock bears S27°W, 40.7 feet

N 1/4 Section 24

In 1969 Williams and Lester found the two (2) original bearing trees and set a 1" iron pipe. Bearing trees are as follows:

72" fir snag bears S54°W, 6.0 feet  
42" Hemlock bears S27°W, 40.7 feet

W 1/4 Corner Section 19, T27S, R8W

Found a BLM brass cap monument set in 1976 from which a:

12" Yew bears N70 1/2°W, 56 links original scribing visible and recorded in the original notes as a Hemlock.

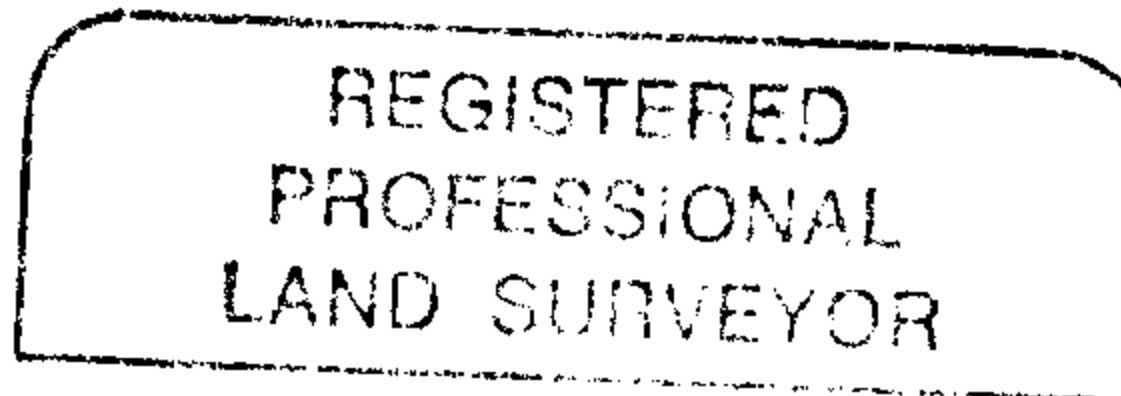
6" Hemlock bears N 10 1/2°E, 125 links scribed

9" Hemlock bears S19 3/4°E, 119 links scribed

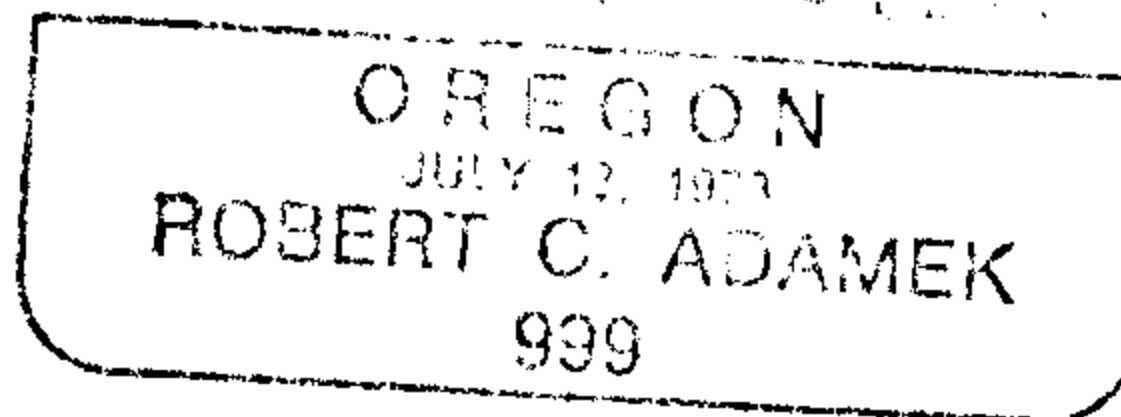
For more information see BLM Dependent Resurvey of T27S, R8W, completed March 29, 1976.

Respectfully submitted

Robert C. Adamek Pls #999  
Dellwood District  
July 15, 1977



*Robert C. Adamek*



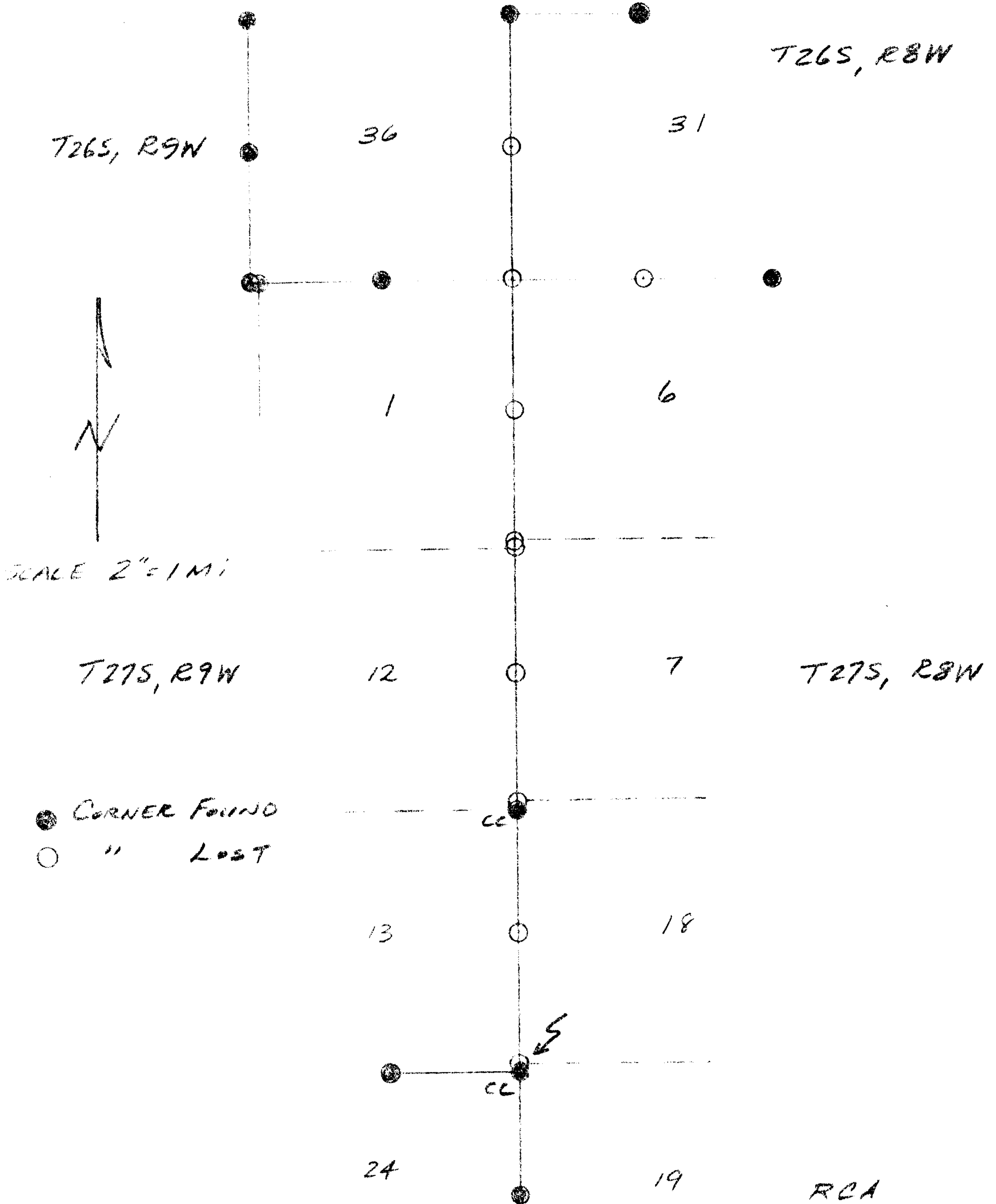
Approved:

*H. R. Reppeto*

H. R. Reppeto  
Region Engineer

APPENDIX I

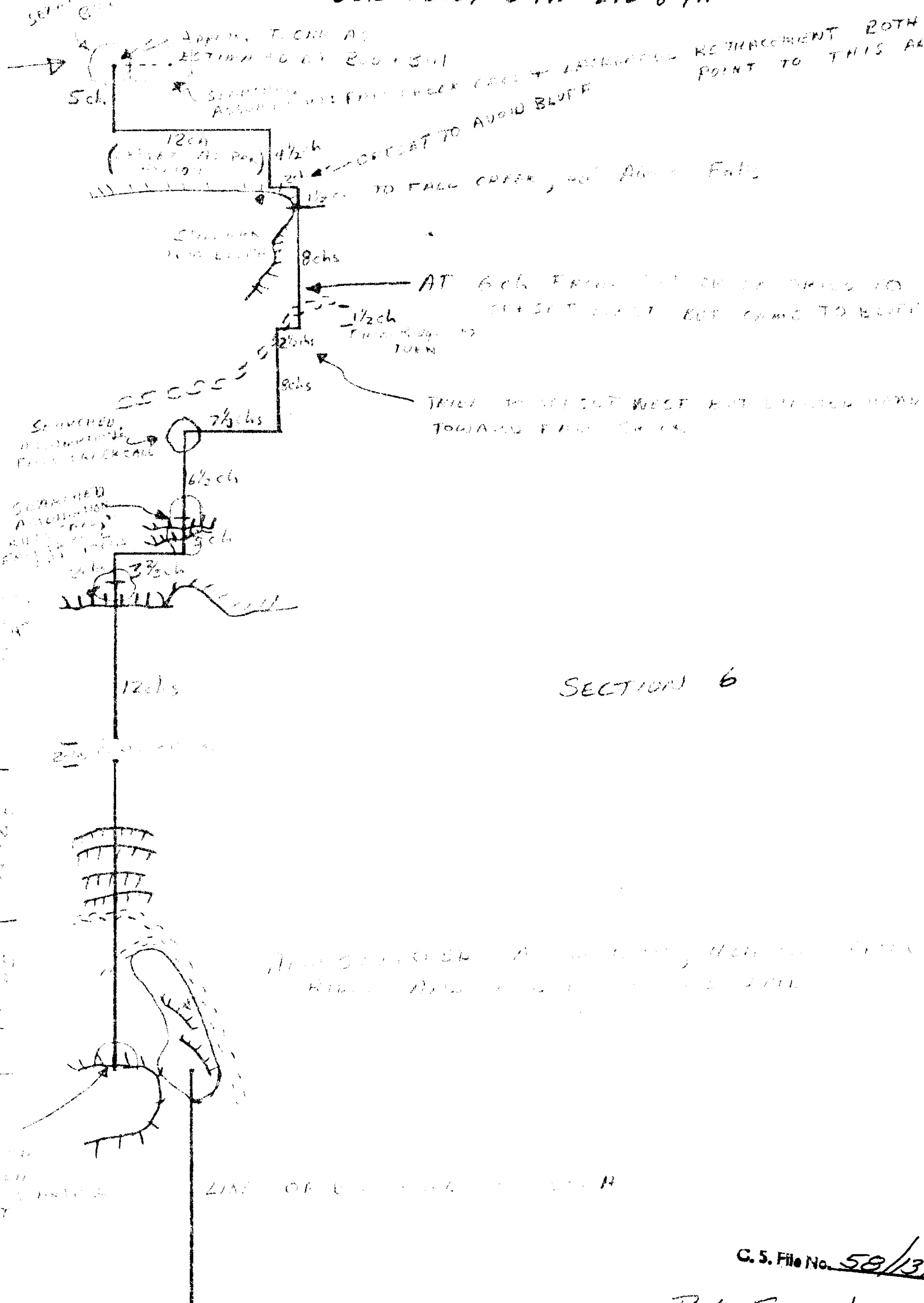
SEARCH PATTERN FOR RESTORATION NW COR  
SEC 19, T27S, R8W



RCA  
7-13-77  
C. S. File No. 58/13

APPENDIX 21  
 DETAILED CORNER SEARCH  
 TWP COR T26S, R8-9WE27S-8-9W

Approx  
 T. 26S  
 26+27  
 1+9



SECTION 6

C.S. File No. 58/139

R. L. SIMON  
 SEPT 1976

APPENDIX III

PORTION OF ORIGINAL NOTES  
 Sec 6, T27S, R24W, N.M.

West edge of T27S, R24W, N.M.

Chains  
 1000  
 2000  
 3000  
 4000

we end at 6000 ft. in level  
 when like sum on the mountain  
 reaching latitude 38° 15' N  
 Thence descend  
 300 feet below ridge at this  
 point - I am confronted by a  
 wall of rock extending up  
 the creek about 7 chains and  
 down stream as far as the  
 eye can see  
 Not being able to get out 500 ft  
 from this point I return to  
 summit of ridge at 3000 ft. on  
 this line and effort east 100  
 yds. Thence North  
 3000  
 Creek is 1000 ft. wide at 3000  
 chains above the falls which is high  
 if falls are feet - decided, water here  
 amounts of 100 feet and no feet -  
 effort back to line which is 300 ft  
 above and at 3000 chains continue  
 to around  
 Cont. 1000 2000 3000 4000 5000 6000  
 by 3000 ft. about 15 years ago  
 At 4000 dist the post still standing  
 but badly decayed (see map) falling  
 is so small I do not establish  
 a clearing bar  
 I set one passing 3 feet long 6 in  
 2 ft 24 ins in the ground for cor  
 of township 24 27 S R 24 W  
 N. marked  
 5263 30100 10  
 2011 3 6 58  
 2733 1 58 and  
 2911 3 36 7. 11 faces with  
 8 inches on each edge  
 from which  
 a line 6 in in diam from

West boundary of T27S, R24W, N.M.

Chains  
 1000  
 2000  
 3000  
 4000

last reaches 1000 ft  
 under fir and hands on dead  
 and mostly fallen  
 under the lower cotton timber  
 around a ridge  
 mountains land on land and  
 with dense undergrowth  
 July 29 1894 at 5000 ft  
 Set of 1000 ft on the latitude  
 are on the 1000 ft. the decl. are  
 and determine a line, mountain  
 with the solar at the cor of 3000  
 1000 and 12. July 28 1896

North returned July 29 1896  
 As end from cor  
 400  
 3000  
 4000

Top of sharp spur 100 feet  
 above cor  
 3000  
 4000

Set a fir post 3 feet long 4 in  
 2 ft 24 ins in the ground for  
 1/4 sec cor. marked 4300 ft  
 from which  
 a fir 24 ins in diam from  
 1000 2000 3000 4000 5000 6000  
 142 335  
 a fir 24 ins in diam from  
 1000 2000 3000 4000 5000 6000  
 142 335  
 5000  
 Top of 1000 ft. total 1000 feet  
 when Cor. was at this point  
 I set off 1000 in the declination