

COUNTY SURVEYORS FILE DATA  
DO NOT REMOVE FROM OFFICE

# SURVEY IN SEC. 36, T26S, R6W, W.M.

## SURVEY FOR CASEY MORGAN SURVEY BY BHW ENGR. & SURVEYING, INC.

July, 1977

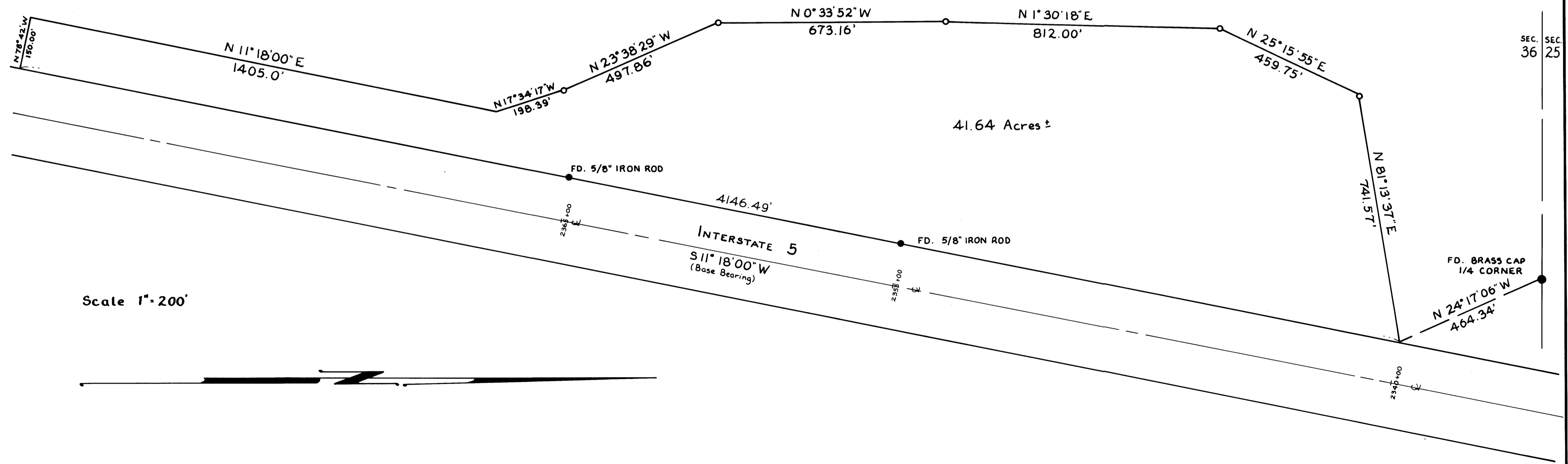
FILED JRL  
RECEIVED

JUL 25 1977

COUNTY SURVEYOR  
DOUGLAS COUNTY, ORE.

REGISTERED  
PROFESSIONAL  
LAND SURVEYOR  
*Romanso E. Ware*  
OREGON  
NOV. 16, 1975  
ROMANSO E. WARE  
1005

● FD. MONUMENTS  
○ SET 5/8" IRON ROD



MAP FILE A1-66-70

MAP FILE A1-66-70