

COUNTY SURVEYORS FILE DATA  
DO NOT REMOVE FROM OFFICE

PROPERTY LINE SURVEY IN LOT 7,  
SEC. 12, T. 27 S., R. 3 W., W. M.

For: Flora Hoffmire Shearn

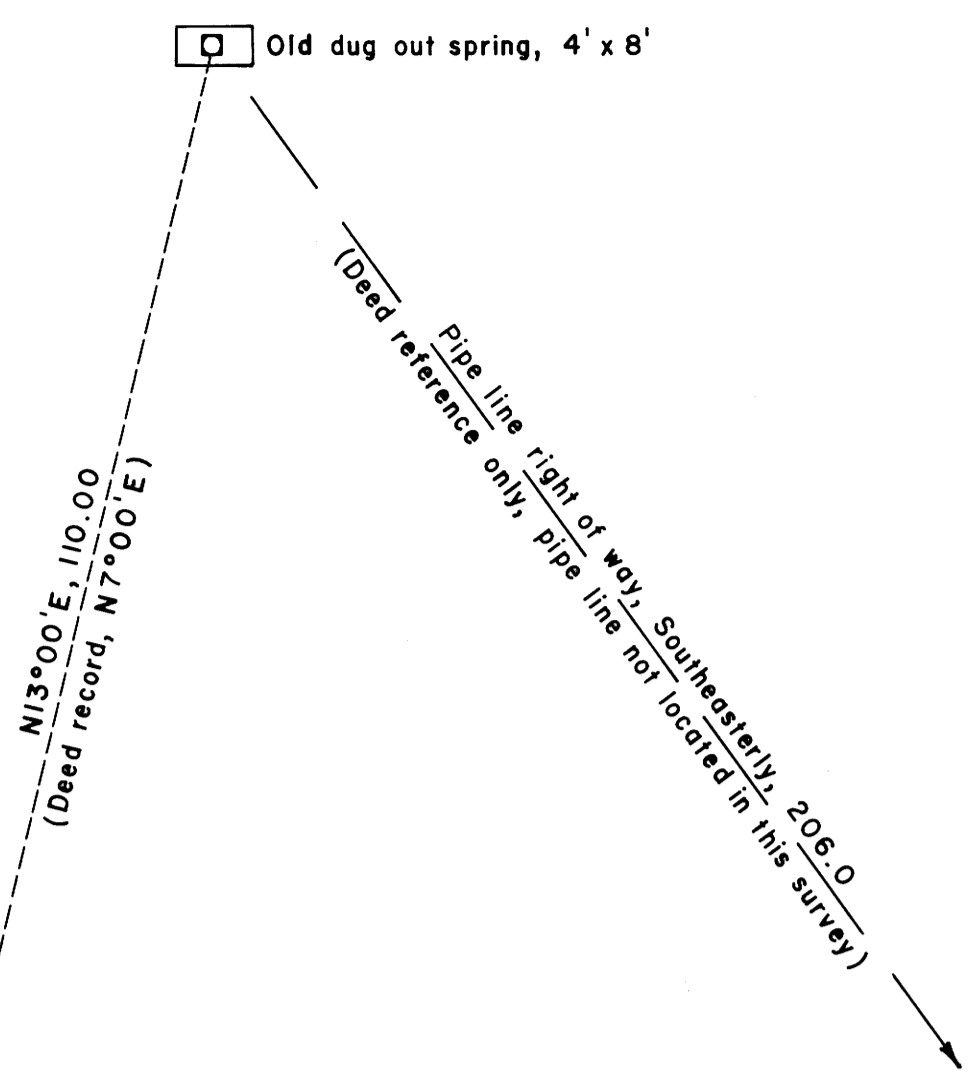
By: Shaner Engineering, Inc.

March 28, 1977

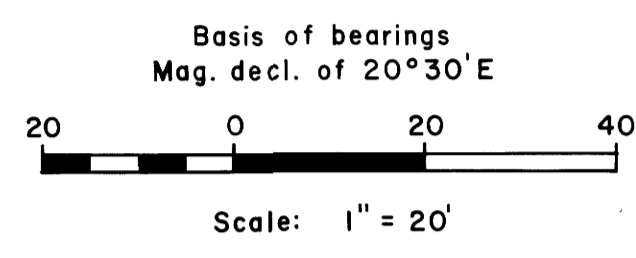
FILED  
RECEIVED MLL

MAR 29 1977

COUNTY SURVEYOR  
DOUGLAS COUNTY, ORE.

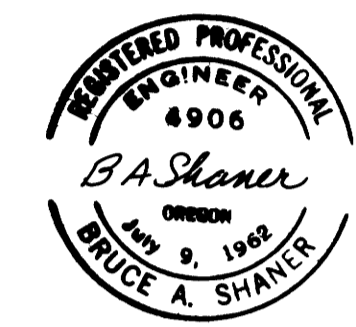


U. S. Plywood Corp.  
Vol. 281, page 869



LEGEND

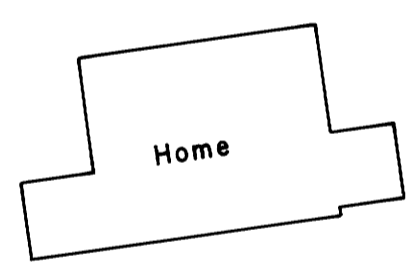
- Corner found (as noted) •
- Corner set, 5/8" iron rod with aluminum cap ○
- Witness corner found ⊙



Dumont Property  
Vol. 316, page 43

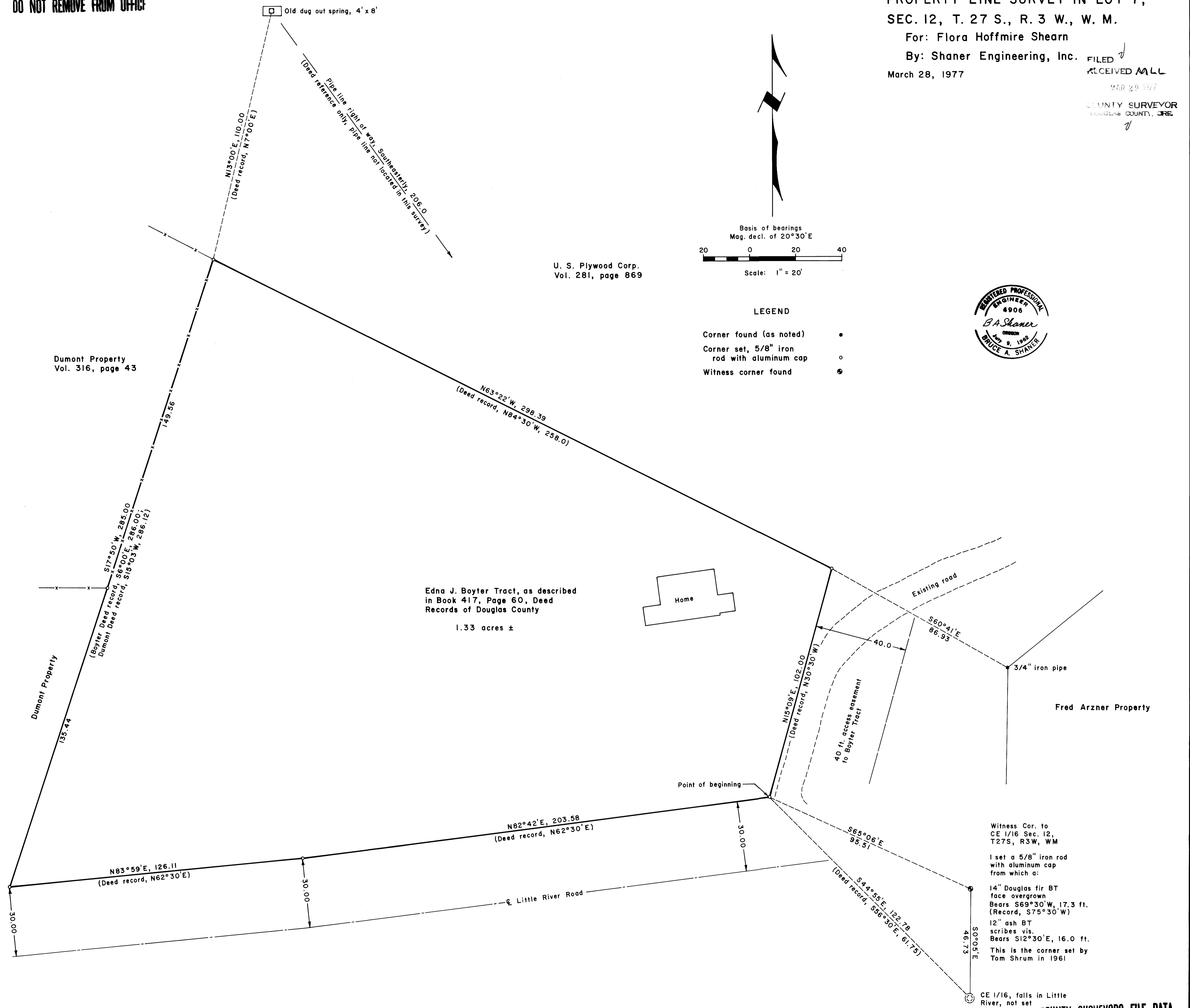
Edna J. Boyter Tract, as described  
in Book 417, Page 60, Deed  
Records of Douglas County

1.33 acres ±



Existing road

Fred Arzner Property



Witness Cor. to  
CE 1/16 Sec. 12,  
T27S, R3W, WM

I set a 5/8" iron rod  
with aluminum cap  
from which a:

14" Douglas fir BT  
face overgrown  
Bears S69°30'W, 17.3 ft.  
(Record, S75°30'W)

12" ash BT  
scribes vis.  
Bears S12°30'E, 16.0 ft.

This is the corner set by  
Tom Shrum in 1961

CE 1/16, falls in Little  
River, not set

COUNTY SURVEYORS FILE DATA  
DO NOT REMOVE FROM OFFICE