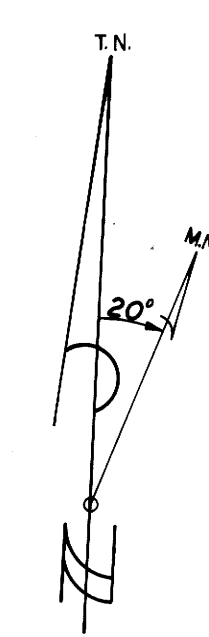
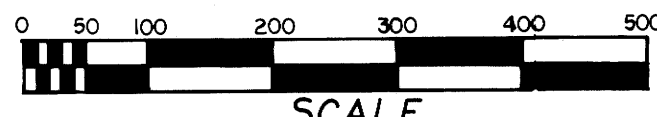


# PLAT OF SURVEY OF HOMESTEAD ENTRY SURVEY NUMBER 179

LOCATED IN  
SECTIONS 1 and 2, T29S, R1E, W.M.  
DOUGLAS COUNTY, OREGON  
SURVEY PERFORMED IN AUGUST 1976 thru JANUARY 1978  
GORDON H. LONG PORTLAND, OR.



**REGISTERED  
PROFESSIONAL  
LAND SURVEYOR**  
*Gordon H. Long*  
OREGON  
JULY 22, 1969  
GORDON H. LONG  
1017

THIS PLAT REPRESENTS A RECORD OF THE RETRACEMENT AND REMONUMENTATION OF HES 179 WHICH CONSTITUTES A PORTION OF THE PROPERTY LINES OF THE UMPIQUA NATIONAL FOREST. THE ORIGINAL SURVEY WAS EXECUTED IN SEPTEMBER 1918 BY FREDERICK W. RADE, U.S. FOREST SERVICE SURVEYOR, AND IS A RECORD OF THE BUREAU OF LAND MANAGEMENT, PORTLAND, OREGON. THE RETRACEMENT AND REMONUMENTATION REPRESENTED ON THIS PLAT IS FOR THE PURPOSE OF IDENTIFYING AND PERPETUATING THE EVIDENCE OF THE MONUMENTS AND ACCESSORIES ESTABLISHED BY THE ORIGINAL SURVEY.

THE WORK WAS PERFORMED DURING AUGUST 1976 THROUGH JANUARY 1978 FOR THE U.S. FOREST SERVICE IN ACCORDANCE WITH THE STATUTES OF THE STATE OF OREGON.

I CERTIFY THE RETRACEMENT, REMONUMENTATION, AND RECORD THEREON, WAS PREPARED BY ME OR MY ASSISTANTS UNDER MY SUPERVISORY DIRECTION AND IS TRUE AND CORRECT TO THE BEST OF MY KNOWLEDGE.

GORDON H. LONG, REGISTERED LAND SURVEYOR  
LICENSE NO. 1017  
REGIONAL CADASTRAL SURVEYOR, REGION SIX  
PORTLAND, OREGON

ASSISTANTS: DENNIS L. GAYLORD, PROJECT SURVEYOR  
RUSSELL L. CRUTCHER, CHIEF OF PARTY  
CHARLES L. LABOLD, INSTRUMENT MAN  
DAVID E. WILLIAMS, CHAINMAN  
ROBERT P. WADSWORTH, CHAINMAN

- ### LEGEND
- ① HES CORNER NUMBER
  - FOUND BRASS CAP
  - SET BRASS CAP
  - ⊗ CORNER NOT MONUMENTED
  - ▣ SET 1/2" ALUMINUM CAP, MARKED "R/W", ON A 5/8" IRON ROD
  - R/W MARKER NOT SET (FALLS IN RIVER)
  - LINE TO WITNESS CORNER OR REFERENCE MONUMENT
  - ( ) HES RECORD CALL
  - M-I ORIGINAL HES MEANDER LINE
  - ▲ ORIGINAL MEANDER LINE ANGLE POINT (ESTABLISHED AT PROPORTIONATE DISTANCE, NOT MONUMENTED DURING THE ORIGINAL OR THIS SURVEY)

FILED  
RECEIVED  
APR 13 1978  
COUNTY SURVEYOR  
DOUGLAS COUNTY, ORE.  
ML

THE RIGHT-OF-WAY DESCRIBED BY THE DEED SHOWN BELOW WAS LOCATED AND MONUMENTED DURING THE RETRACEMENT AND MONUMENTATION SURVEY OF HES 179.

### RIGHT-OF-WAY DEED

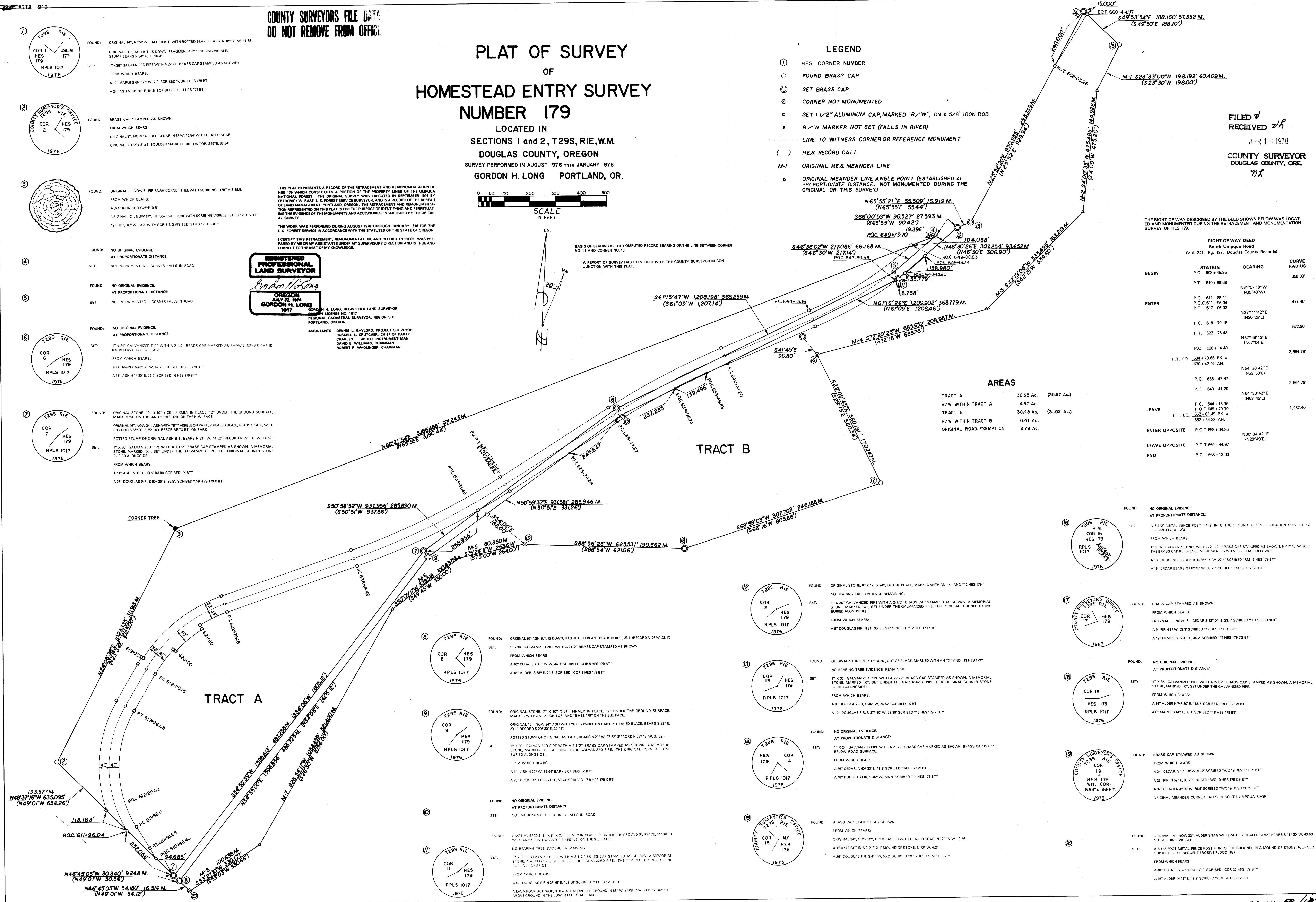
South Umpqua Road  
(Vol. 241, Pg. 197, Douglas County Records)

STATION	BEARING	CURVE RADIUS
BEGIN		
P.C. 608+45.35		358.09
P.T. 611+88.68	N34°57'18"W (N35°43'W)	
P.O.C. 611+08.11		477.46
P.T. 617+06.03	N27°11'42"E (N28°28'E)	
P.C. 618+70.15		572.96
P.T. 622+76.48	N67°49'42"E (N67°04'E)	
P.O.C. 628+14.49		2,864.79
P.T. EQ. 634+73.66 BK. = 630+47.94 AH.	N54°38'42"E (N53°53'E)	
P.C. 635+47.87		2,864.79
P.T. 640+41.20	N64°30'42"E (N63°45'E)	
P.O.C. 644+13.16		1,432.40
P.D. C. 648+79.70		
P.O.C. 611+96.04	652+64.88 BK. = 652+64.88 AH.	
ENTER OPPOSITE	P.O.T. 658+08.26	N30°34'42"E (N29°48'E)
LEAVE OPPOSITE	P.O.T. 660+44.97	
END	P.C. 663+13.33	

### AREAS

TRACT A	36.55 Ac.	(35.97 Ac.)
R/W WITHIN TRACT A	4.97 Ac.	
TRACT B	30.48 Ac.	(31.02 Ac.)
R/W WITHIN TRACT B	0.41 Ac.	
ORIGINAL ROAD EXEMPTION	2.79 Ac.	

- ① FOUND: ORIGINAL 14" NOW 22" ALDER B.T. WITH ROTTED BLAZE BEARS N 18° 30' W, 11.86'.  
ORIGINAL 30" ASH B.T. IS DOWN, FRAGMENTARY SCRIBING VISIBLE.  
STUMP BEARS N 84° 40' E, 26.4'.  
SET: 1" x 3/8" GALVANIZED PIPE WITH A 2-1/2" BRASS CAP STAMPED AS SHOWN.  
FROM WHICH BEARS:  
A 12" MAPLE S 69° 30' W, 7.9' SCRIBED "COR 1 HES 179 BT"  
A 24" ASH N 18° 30' E, 54.5' SCRIBED "COR 1 HES 179 BT"
- ② FOUND: BRASS CAP STAMPED AS SHOWN.  
FROM WHICH BEARS:  
ORIGINAL 8" NOW 14", RED CEDAR, N 3° W, 15.84' WITH HEALED SCAR.  
ORIGINAL 2-1/2" x 3" BOULDER MARKED "BR" ON TOP, 54.0' E, 32.34'.
- ③ FOUND: ORIGINAL 7" NOW 8" FIR SNAG CORNER TREE WITH SCRIBING "179" VISIBLE.  
FROM WHICH BEARS:  
A 3/4" IRON ROD S 45° E, 0.5'  
ORIGINAL 12" NOW 17", FIR S 57° 50' E, 8.58' WITH SCRIBING VISIBLE "3 HES 179 CS BT"  
12" FIR S 48° W, 23.3' WITH SCRIBING VISIBLE "3 HES 179 CS BT"
- ④ FOUND: NO ORIGINAL EVIDENCE.  
AT PROPORTIONATE DISTANCE:  
SET: NOT MONUMENTED - CORNER FALLS IN ROAD
- ⑤ FOUND: NO ORIGINAL EVIDENCE.  
AT PROPORTIONATE DISTANCE:  
SET: NOT MONUMENTED - CORNER FALLS IN ROAD
- ⑥ FOUND: NO ORIGINAL EVIDENCE.  
AT PROPORTIONATE DISTANCE:  
SET: 1" x 24" GALVANIZED PIPE WITH A 2-1/2" BRASS CAP MARKED AS SHOWN. BRASS CAP IS 0.5' BELOW ROAD SURFACE.  
FROM WHICH BEARS:  
A 14" MAPLE S 69° 30' W, 42.7' SCRIBED "6 HES 179 BT"  
A 18" ASH N 1° 30' E, 75.7' SCRIBED "6 HES 179 BT"
- ⑦ FOUND: ORIGINAL STONE, 10" x 10" x 28", FIRMLY IN PLACE, 12" UNDER THE GROUND SURFACE, MARKED "X" ON TOP, AND "7 HES 179" ON THE N.W. FACE.  
ORIGINAL 16" NOW 24" ASH WITH "BT" VISIBLE ON PARTLY HEALED BLAZE, BEARS S 34° E, 52.14' (RECORD S 30° E, 52.14'). SCRIBED "X" BT ON BARK.  
ROTTED STUMP OF ORIGINAL ASH B.T. BEARS N 21° W, 14.52' (RECORD N 27° 30' W, 14.52')  
SET: 1" x 3/8" GALVANIZED PIPE WITH A 2-1/2" BRASS CAP STAMPED AS SHOWN. A MEMORIAL STONE, MARKED "X", SET UNDER THE GALVANIZED PIPE. (THE ORIGINAL CORNER STONE BURIED ALONGSIDE)  
FROM WHICH BEARS:  
A 14" ASH, N 36° E, 13.5' BARK SCRIBED "X BT"  
A 26" DOUGLAS FIR, S 60° 30' E, 85.8' SCRIBED "7 HES 179 X BT"



M 65-77

FILED  
RECEIVED *vh*

APR 1 1978

COUNTY SURVEYOR  
DOUGLAS COUNTY, ORE.

SURVEYOR'S REPORT

DEPENDENT RESURVEY

OF

HOMESTEAD ENTRY SURVEY NO. 179

LOCATED IN SECTIONS 1 AND 2  
T29S, R1E, W.M.

Prepared By: *Dennis L. Gaylord* *3-24-78*  
Date

Approved By: *Wallace J. Rumbery* *3-24-78*  
Date

History of Survey and Land Status of HES 179

- September 1916 - The Homestead Entry Survey was performed by Frederick W. Rase, surveyor for the U.S. Forest Service. The Homestead Entry file number is 09503.
- October 1919 - Homestead Entry No. 179 was patented on October 22, 1919. The patent number is HE 714307.
- October 1921 - The subdivision of the portion of Township 29 South, Range 1 East, Willamette Meridian, in which HES 179 lies was performed by GLO Surveyor Fred Mensch. Mensch set a witness corner for the 1/4 corner common to Sections 1 and 2. (The true corner location fell in the South Umpqua River.) He also made ties from the true corner point for 1/4 S2/S1 to Corner 6 and Corner 1 of the H.E. Survey.
- October 1, 1954 - Quitclaim Deed for right-of-way for South Umpqua Road from Nicholas and Ethel Andraieff to Douglas County. Vol. 239, Page 728, Douglas County deed records.
- February 16, 1955 - Fee simple deed of road right-of-way for South Umpqua Road from Douglas County to the United States of America. Vol. 241, Page 197, Douglas County deed records.

Reason for Survey

After some preliminary corner search, it was determined that much of the original corner evidence had been destroyed by man's activities in the vicinity and by the washing action of the South Umpqua River.

The road right-of-way had never been surveyed on the ground, and there was some question as to the exact relationship of the right-of-way, the Homestead Entry Survey, and the original road exemption.

Large quantities of river rock have been removed from the river in the area of the homestead by the private landowner, and this survey was necessary to clearly delineate the property line in order to minimize future trespass.

Special Instructions

Make a dependent resurvey of Homestead Entry Survey No. 179 and of the South Umpqua Road to the extent necessary to mark the boundaries of the HES as well as the road right-of-way. HES corner restoration and proportionment of lost corners to be performed in accordance with the BLM Manual of Surveying Instructions, 1973.

Make a survey of the portion of the South Umpqua Road passing through the homestead, obtaining ground information necessary to locate the existing road and roadway features.

All survey lines are to be closed loops. The minimum lineal error of closure acceptable is 1/6,000.

Monument all exterior corners of the HES with brass cap monuments. Monument all original road exemption corners for which original evidence is found. Monument one side only, of the road exemption, when no original corner evidence remains.

Monument the South Umpqua Road right-of-way with 5/8" iron rods with 1" aluminum caps.

#### Conditions Found on the Ground

During the preliminary corner search, original evidence was found for Corners No. 2, 3, 15, 17 and 19.

The original corner stone for Corner 2, plus the original bearing tree and bearing rock, were found. This corner was renewed by the County Surveyor a short time after the preliminary corner search was completed.

The original corner tree monument for Corner 3 was found to be a broken snag. A 3/4" iron rod and two bearing trees were found per the County Surveyor's renewal of 1969.

The original corner stone for Corner 15 was found set solidly in place. One original bearing tree was also found, along with an axle set in the original mound of stone to the northwest of the corner. This corner was also renewed by the County Surveyor shortly after the preliminary corner search.

Corner 17 was found as renewed by the County Surveyor in 1969.

The brass cap set in the first renewal of Corner 19 by the County Surveyor was found to be washed away by the South Umpqua River. The river also washed away the one original bearing tree which remained at the time of the renewal as well as the bearing tree set by the County Surveyor. The brass cap witness corner set by the County Surveyor's second renewal along with accompanying accessories was found in satisfactory condition.

The following is a description of each remaining corner and evidence (if any) found during the survey.

Corner 1 (also USLM 179). There was no trace of the corner stone nor the large mound of stones which was raised alongside the corner by the original surveyor. Two of the original bearing trees were found. The

corner location was determined by reference to the original bearing trees, and a monument set and witnessed.

Corner 4. No original corner evidence remains of this corner. The proportioned location of the corner falls in the South Umpqua Road. This corner was not monumented.

Corner 5. No original corner evidence remains of this corner. The proportioned location of the corner falls in the South Umpqua Road. This corner was not monumented.

Corner 6. No original corner evidence remains of this corner. The proportioned location of the corner falls in the South Umpqua Road. The proportioned location was monumented and witnessed.

Corner 7. The original corner stone was found set solidly in place. Evidence of both bearing trees was found. The corner stone was replaced with a brass cap monument and new bearing trees blazed and scribed.

Corner 8. This corner was destroyed by road construction some time in the past. One original bearing tree remains. This bearing tree is also a bearing tree for Corner 1. The record bearing for this B.T. was found to be in error. The Quadrant of Record is NW, and the tree is in the NE Quadrant. A review of the original survey notes shows that all the adjacent road exemption corners were witnessed by the same bearing trees, as it the case with this bearing tree.

Corner 9. The original corner stone was found set solidly in place. Evidence of both bearing trees was also found (same bearing trees as for Corner 7). The corner stone was replaced with a brass cap monument and new bearing trees blazed and scribed.

Corner 10. No original corner evidence remains of this corner. The proportioned location of the corner falls in the South Umpqua Road. This corner was not monumented.

Corner 11. The original corner stone was found set solidly in place. No bearing tree evidence was found. The corner stone was replaced with a brass cap monument and new bearing trees blazed and scribed.

Corner 12. The original corner stone was found; however, it was out of place, apparently disturbed by logging activities. No bearing tree evidence was found. The proportioned corner point was monumented with a brass cap monument, and one bearing tree was blazed and scribed. No other trees nearby were suitable for a bearing tree.

Corner 13. The original corner stone was found; however, it was out of place, apparently disturbed by logging activities. No bearing tree evidence was found. The proportioned corner point is monumented with a brass cap monument, and new bearing trees blazed and scribed.

Corner 14. All original evidence of this corner was destroyed when the South Umpqua Road was constructed. The proportioned corner point, which falls in the road, was monumented with a brass cap monument and new bearing trees were blazed and scribed.

Corner 16. All original evidence of this corner has apparently been destroyed by the erosive action of the South Umpqua River. The proportioned corner point falls on a gravel bar along the north bank of the river and is monumented with a 5½-foot steel fence post set 4½ feet into the ground. A brass cap reference monument was set N41°45'W, 90.8 feet from the corner point. The reference monument was witnessed with two bearing trees.

Corner 18. All original evidence of this corner has apparently been destroyed by the erosive action of the South Umpqua River. The proportioned corner point is monumented with a brass cap monument and new bearing trees blazed and scribed.

Corner 20. The original corner stone monument for this corner has been washed away by the South Umpqua River. One original bearing tree was found. A 5½-foot steel fence post was set 4 feet into the ground, by reference to the original bearing tree. Two new bearing trees were blazed and scribed.

#### Survey and Calculations

The survey commenced in August of 1976 and was completed in January 1978. The survey was performed with a one-minute Zeiss theodolite, a Hewlett-Packard 3800-A distance measuring device, and a 300-foot steel chain. The instruments and chain were periodically checked, adjusted and calibrated on the standard course, as set and standardized by the Douglas County Surveyor, in Happy Valley. All traverse loops were closed with an overall error of closure of 1:6,500.

Basis of bearing for the survey is the computed bearing between Corners 11 and 15 as determined by calculations from the original field notes.

The position for lost corners was determined using single proportion method as described in the BLM Manual of Instruction, using original found corners.

The South Umpqua Road was traversed by Victor McLind under a A&E contract. The contract specification for accuracy was 1:1,000. In order to assure the road traverse was performed to an accuracy comparable to the HES survey, the road traverse was re-run by Forest Service crews with a theodolite and DMD and brought up to 1:6,000 accuracy. Ties were also made from the road traverse to several HES corners.

The deed description of the South Umpqua Road right-of-way is not written with specific reference to the HES corners, thus the basis of bearing

Corner 14. All original evidence of this corner was destroyed when the South Umpqua Road was constructed. The proportioned corner point, which falls in the road, was monumented with a brass cap monument and new bearing trees were blazed and scribed.

Corner 16. All original evidence of this corner has apparently been destroyed by the erosive action of the South Umpqua River. The proportioned corner point falls on a gravel bar along the north bank of the river and is monumented with a 5½-foot steel fence post set 4½ feet into the ground. A brass cap reference monument was set N41°45'W, 90.8 feet from the corner point. The reference monument was witnessed with two bearing trees.

Corner 18. All original evidence of this corner has apparently been destroyed by the erosive action of the South Umpqua River. The proportioned corner point is monumented with a brass cap monument and new bearing trees blazed and scribed.

Corner 20. The original corner stone monument for this corner has been washed away by the South Umpqua River. One original bearing tree was found. A 5½-foot steel fence post was set 4 feet into the ground, by reference to the original bearing tree. Two new bearing trees were blazed and scribed.

Survey and Calculations

The survey commenced in August of 1976 and was completed in January 1978. The survey was performed with a one-minute Zeiss theodolite, a Hewlett-Packard 3800-A distance measuring device, and a 300-foot steel chain. The instruments and chain were periodically checked, adjusted and calibrated on the standard couse, as set and standardized by the Douglas County Surveyor, in Happy Valley. All traverse loops were closed with an overall error of closure of 1:6,500.

Basis of bearing for the survey is the computed bearing between Corners 11 and 15 as determined by calculations from the original field notes.

The position for lost corners was determined using the Grant Boundary method as described in the BLM Manual of Instructions (5-44), using original found corners for control.

The South Umpqua Road was traversed by Victor McLind under a A&E contract. The contract specification for accuracy was 1:1,000. In order to assure the road traverse was performed to an accuracy comparable to the HES survey, the road traverse was re-run by Forest Service crews with a theodolite and DMD and brought up to 1:6,000 accuracy. Ties were also made from the road traverse to several HES corners.

The deed description of the South Umpqua Road right-of-way is not written with specific reference to the HES corners, thus the basis of bearing

U.S. DEPARTMENT OF AGRICULTURE | DATE 3/30/79  
**REFERENCE SLIP**

TO Virginia L.

C.S. FILE No. 58/162-SF

- ACTION
- APPROVAL
- AS REQUESTED
- FOR COMMENT
- FOR INFORMATION
- INITIALS
- NOTE AND FILE
- NOTE AND RETURN
- PER PHONE CALL
- RECOMMENDATION
- REPLY FOR SIGNATURE OF
- RETURNED
- SEE ME
- YOUR SIGNATURE

REMARKS This replaces page 4 of surveyors Report (C.S. FILE No. 58/118) 58/162 H.E.S. No. 179

T 27-1 E

FROM D. J. Layland

does not correspond to that of the retracement survey. There is no mathematical way to correlate the retracement survey with the deed description. The only way the two can satisfactorily be correlated is by shifting and rotating the deed description to the location of the "best fit" with the existing road. This is what is reflected on the plat of survey and all final calculations, as well as the right-of-way monuments set.

Right-of-way monuments were set at each P.C. and P.T., as well as at each point where the right-of-way width changes (except those points which fall in the South Umpqua River).

Each HES corner which was monumented is also posted with a steel fence post with a "Property Boundary" sign and a "Warning" sign (54-2 and 54-4 signs) attached.

Corner record cards (7100-52) for all the HES corners monumented or tied by survey are on file at the office of the U.S. Forest Service, Umpqua National Forest.