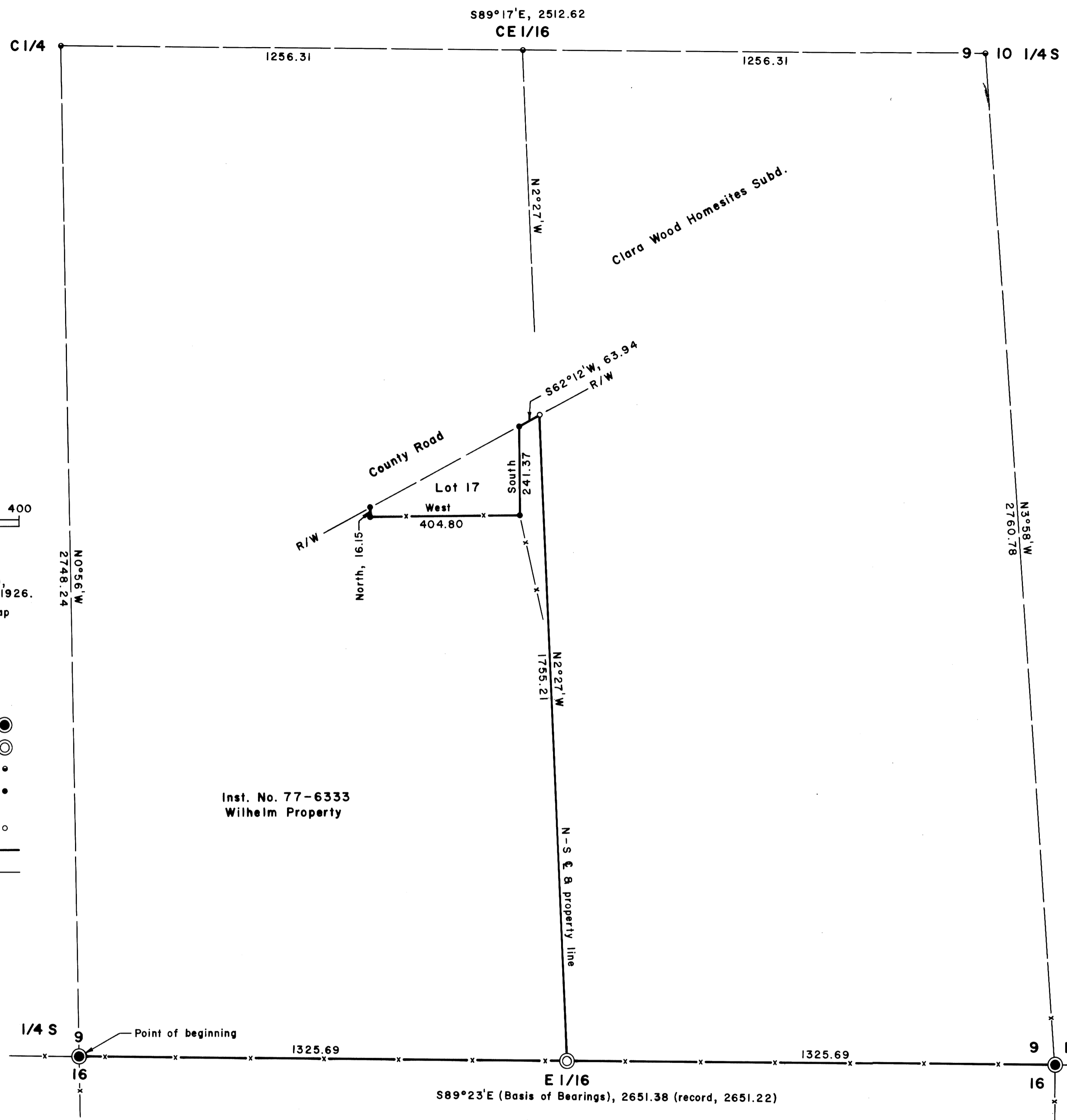


FILED
RECEIVED LC
APR 10 1978
COUNTY SURVEYOR
DOUGLAS COUNTY, ORE.



Basis of Bearings:
Section Line $\frac{9}{16}$
Scale: 1" = 200'
Reference:
1. USGLO Survey of Section 9,
T 26 S, R 3 W, dated Jan. 28, 1926.
2. Douglas County Surveyor Map
File M5-26.

LEGEND
Section Corner found ●
E 1/16 Corner set ○
Legal Corner projected •
Property corner found (3/4" iron rod) •
Property corner set (5/8" iron rod with aluminum cap) ○
Line run —
Line projected —

Inst. No. 77-6333
Wilhelm Property

Fd. brass cap mkd.
1/4 S9, S16 1924
From which a:
18" white oak original BT
Bears N11°W, 22.2 ft.
(Record, N15°W, 23.1 ft.)
12" white oak BT
Bears S4°W, 58.1 ft.
(Record, S9°W)

Fd. brass cap mkd.
T26 S, R 3 W
S9, S10, S16, S15 1924
From which a:
36" white fir BT
Now blown down
Bears N40°W, 61.4 ft.
12" Douglas fir BT
Bears N15°E, 15.2 ft.
(Record, N21°E)
34" Douglas fir BT
Bears S36°E, 43.6 ft.
(Record, S30°E)
18" cedar BT
Bears S46°W, 157.1 ft.
(Record, S51 1/2°W)
12" Douglas fir BT
Bears N26°W, 17.8 ft.
(Record, N19 1/2°W)
Corner is at an old
4 way fence corner.

PROPERTY LINE SURVEY IN THE
SE 1/4 SEC. 9, T 26 S, R 3 W, W. M.
DOUGLAS COUNTY, OREGON

For: Mazama Timber Products, Inc.
Creswell, Oregon
By: Shaner Engineering, Inc.
Roseburg, Oregon

April 6, 1978

Set brass cap mkd.
E1/16 S9, S16 1978
From which a:
6" Douglas fir scribed
"E1/16 S9 BT"
Bears N63°W, 40.0 ft.
8" cedar scribed
"E1/16 S16 BT"
Bears S13°W, 15.1 ft.

REGISTERED
PROFESSIONAL
LAND SURVEYOR
BA Shaner
OREGON
OCT. 4, 1957
BRUCE A SHANER
430

COUNTY SURVEYORS FILE DATA
DO NOT REMOVE FROM OFFICE