

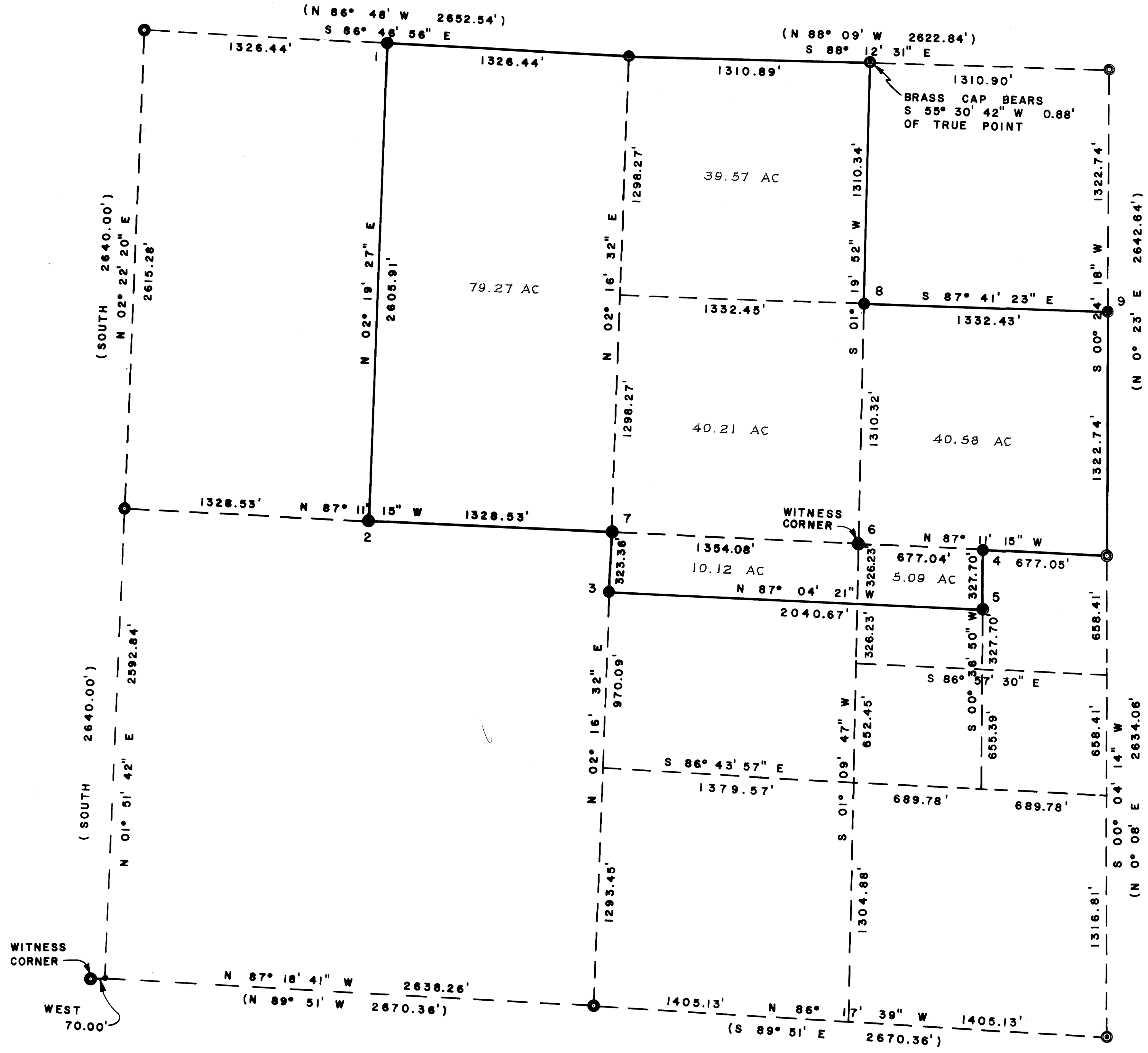
SURVEY FOR DOUGLAS COUNTY BOARD OF COMMISSIONERS

IN SEC. 12, T.26 S., R.3 W, W.M.

SURVEYED BY DOUGLAS COUNTY SURVEYOR'S OFFICE
FRANCIS L. INGRAM COUNTY SURVEYOR
MARCH 1978

REGISTERED
PROFESSIONAL
LAND SURVEYOR
Francis L. Ingram
OREGON
JULY 11, 1968
FRANCIS L. INGRAM
902

FILED
RECEIVED *sh*
APR 5 1978
COUNTY SURVEYOR
DOUGLAS COUNTY, ORE.



SCALE 1" = 400'
1" = 0.3048006 M

LEGEND

- FOUND BRASS CAP
- ⊙ SET BRASS CAP
- () RECORD CALLS
- COMPUTED NOT SET

NOTE: BEARINGS AND DISTANCES SHOWN ARE TRUE. SURVEY BASED ON THE OREGON STATE PLANE COORDINATE SYSTEM, SOUTH ZONE, USING THE FOLLOWING CONTROL STATIONS:

NU-25 1972 DCS	609,529.71
	1,315,883.33
SCOTT R.M.-3 1971 DCS	632,051.86
	1,318,470.37

BEARING	TREES	SCRIBED
14" YEW S17°W 15.1'		"W 1/6 S12 CS BT"
35" DOUG. FIR N53°W 99.8'		"W 1/6 S1 CS BT"
16" RED CEDAR N 1°W 37.3'		(BOTH TREES:)
24" DOUG. FIR S 83°E 101.9'		"CW 1/16 S12 CS BT"
18" HEMLOCK S 73°E 57.4'		(BOTH TREES:)
17" HEMLOCK S 5°E 71.0'		"CNNS 1/256 S12 CS BT"
17" DOUG. FIR S75 1/2°W 17.6'		(BOTH TREES:)
15" GRAND FIR S 2 1/2°E 33.6'		"CEE 1/64 S12 CS BT"
12" DOUG. FIR N10°E 17.8'		(BOTH TREES:)
30" RED CEDAR N89°E 29.8'		"CNNESE 1/256 S12 CS BT"
10" RED CEDAR N 18 1/2°E 29.8'		(BOTH TREES:)
16" HEMLOCK N 78 1/2°W 3.9'		"WCCE 1/16 S12 CS BT"
30" RED CEDAR N 35 1/2°W 3.4'		(BOTH TREES:)
6" GRAND FIR N 48°E 9.4'		"C 1/4 S12 CS BT"
8" DOUG. FIR S10°E 12.3'		(BOTH TREES:)
18" SUG. PINE S59°W 37.0'		"NE 1/16 S12 CS BT"
12" RED CEDAR N51°W 28.5'		(BOTH TREES:)
16" DOUG. FIR S 34°W 26.8'		"N 1/16 S12 CS BT"

NOTE: SEE DOUGLAS COUNTY CORNER RENEWAL RECORDS FOR ADDITIONAL INFORMATION ON CORNERS.

CS FILE FOLDER

CONTAINS

MORE

INFORMATION