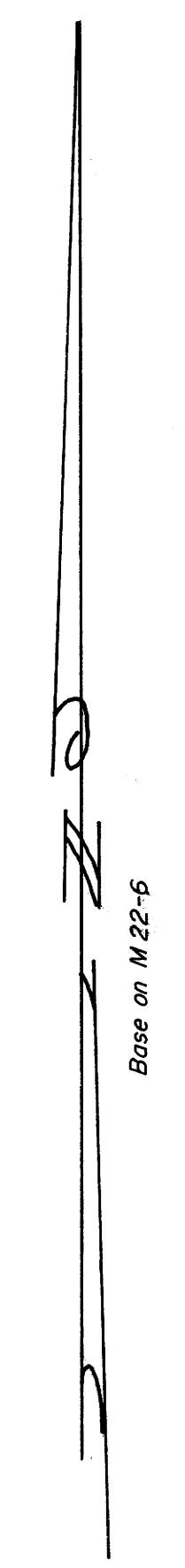
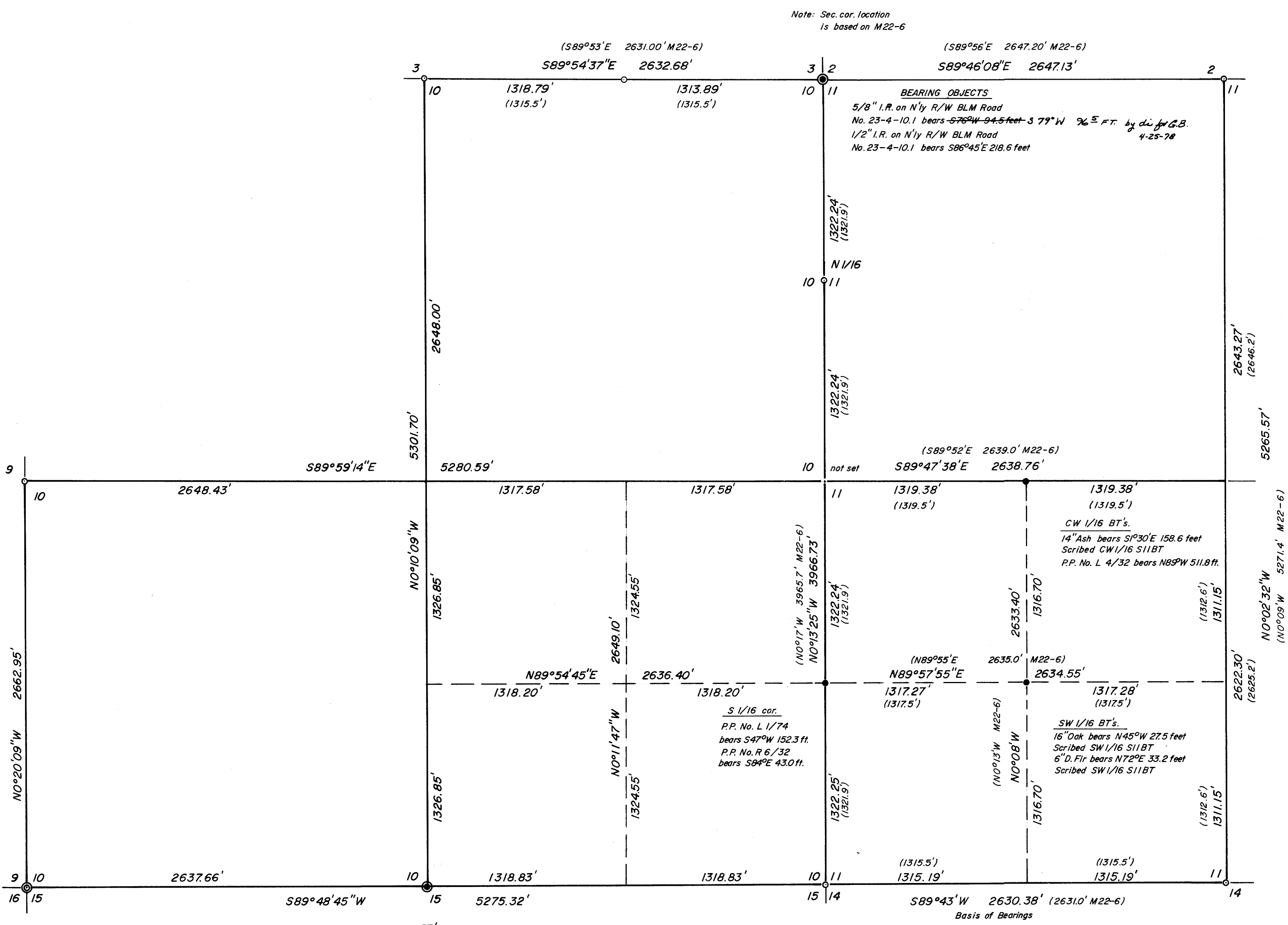


MAP FILE M22-6  
 COUNTY SURVEYORS FILE DATA  
 DO NOT REMOVE FROM OFFICE

FILED *dh*  
 RECEIVED *dh*  
 MAR 30 1978  
 COUNTY SURVEYOR  
 DOUGLAS COUNTY, ORE.  
*dh*



- LEGEND
- ——— Set 5/8" iron rod
  - ——— Found 1" T-iron, per M22-6
  - ⊙ ——— Found Brass cap
  - ⦿ ——— Set Brass cap

COUNTY SURVEYORS FILE DATA  
 DO NOT REMOVE FROM OFFICE

REGISTERED  
 PROFESSIONAL  
 SURVEYOR  
*Richard Baughman*  
 STATE OF OREGON

SUBDIVISION IN SECTIONS 10 & 11, T.23S. R.4W.W.M.	
FOR: SUN STUDS INC	SCALE 1"=500'
BY: BAUGHMAN TECHNICAL SERVICES INC	DRAWN BY <i>Eab</i>
DATE MAR. 13, '78	APPROVED BY
	DRAWING NUMBER FM 1-32