

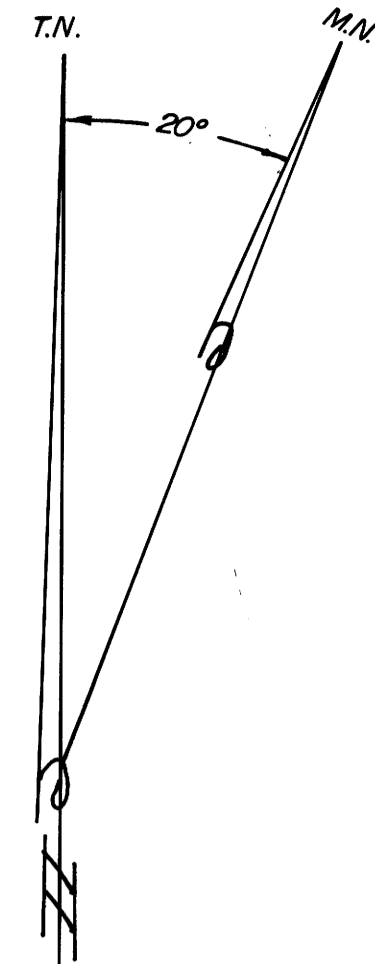
SURVEY FOR U.S. FOREST SERVICE IN SECTION 2, T.31S. R.2W.W.M., DOUGLAS COUNTY, OREGON BY: BAUGHMAN TECHNICAL SERVICES, INC.

MARCH 1978



LEGEND

- — Found Brass cap
- — Set Brass cap
- () — Record calls
- - - - - Fence line
- Transmission line
- True lines posted with steel fence posts and government property signs.



FILED
RECORDED
MAR 13 1978
COUNTY SURVEYOR
DOUGLAS COUNTY, OREGON

1 Found Brass cap set by Douglas County, Surveyors Office

2 Set 2"x30" I.P., with Brass cap

3 Found Brass cap, set by Douglas County, Surveyors Office

4 Found Brass cap, set by Douglas County, Surveyors Office

5 Set 2"x30" I.P., with Brass cap

6 Set 2"x30" I.P., with Brass cap

7 Set 2"x30" I.P., with Brass cap

8 Found Brass cap, set by Douglas County, Surveyors Office

9 Found Brass cap, set by Douglas County, Surveyors Office

10 Set 2"x30" I.P., with Brass cap

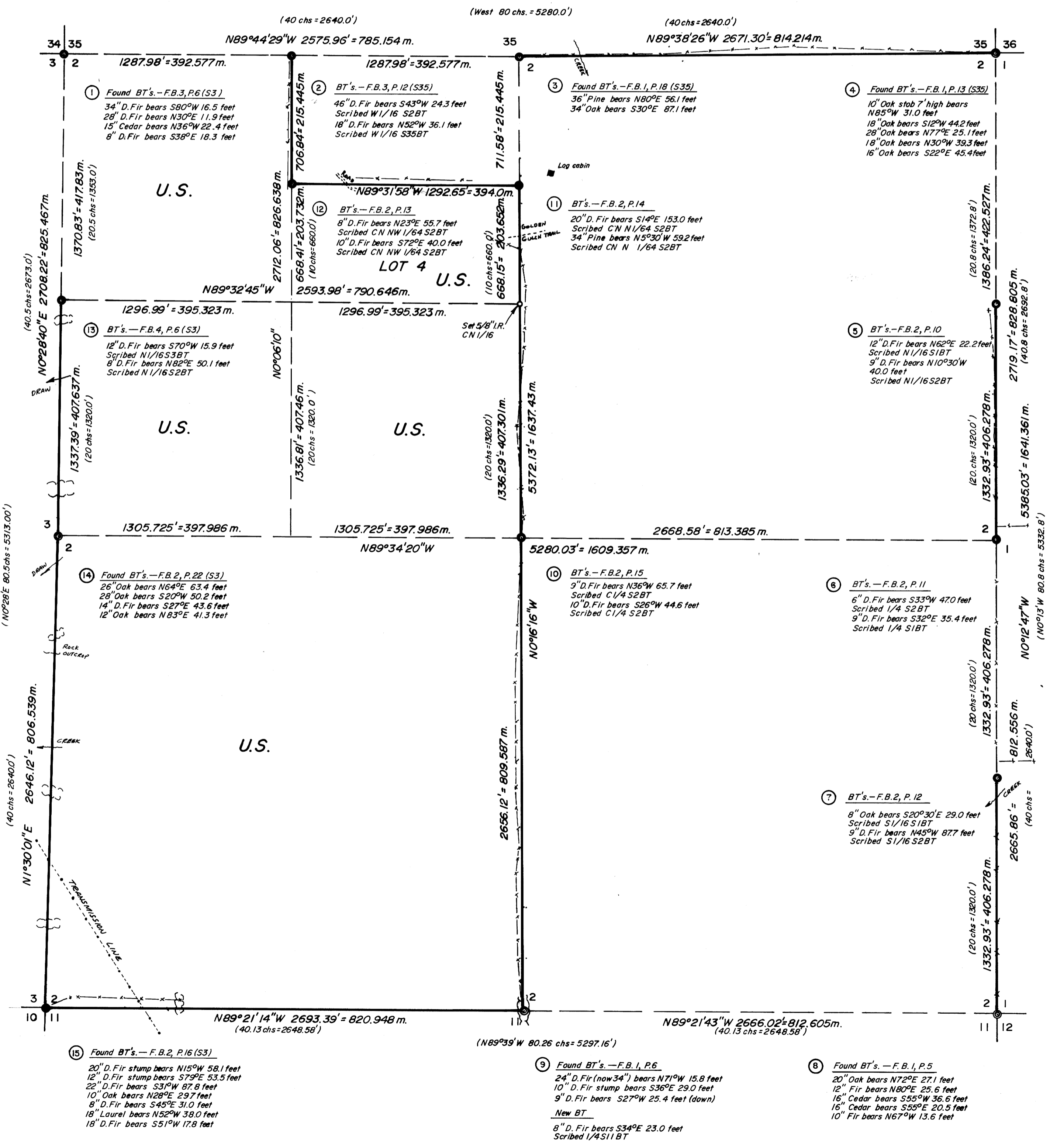
11 Set Brass cap in concrete, in Rock, 3' diameter.

12 Set 2"x30" I.P., with Brass cap

13 Set 2"x30" I.P., with Brass cap

14 Found Brass cap, set by Douglas County, Surveyors Office

15 Found Brass cap, set by Douglas County, Surveyors Office



"I, GLENN S. BAUGHMAN, a registered professional land Surveyor in the State of Oregon, hereby certify that this plat and the notes hereon, or attached, are a correct representation of a survey I performed during December 1977—March 1978 for the U.S. Forest Service, in accordance with the statutes of the State of Oregon and with the Articles of my contract."

Glenn S. Baughman
GLENN S. BAUGHMAN
Registered Professional Land Surveyor
Oregon License 536

REGISTERED
PROFESSIONAL
LAND SURVEYOR

Glenn S. Baughman